

## INSIDE

- Officer and Councilor Nominees, p. 9
- 2000 Medalists, Awardees, p. 19
- Fellows, Members, p. 29
- Student Associates, p. 34

## Impact Events and Their Effect on the Origin, Evolution, and Distribution of Life

David A. Kring, Department of Planetary Sciences, University of Arizona, 1629 E. University Blvd., Tucson, AZ 85721, USA, [kring@pl.arizona.edu](mailto:kring@pl.arizona.edu)

### ABSTRACT

Impact cratering has affected the geologic and biologic evolution of Earth, from the earliest stages of accretion to the present. The environmental consequences of impact cratering and their biologic repercussions are illustrated by the Chicxulub impact event and its link to the Cretaceous-Tertiary (K-T) mass extinction event. While smaller impact events are more common, there were probably four to five additional impact events of this size during the Phanerozoic. These types of large impact events, and even larger ones, occurred more frequently earlier in Earth history. A particularly intense period of bombardment appears to have occurred ~3.8–3.9 Ga, corresponding to the earliest isotopic traces of life on Earth. These impact events may have made it difficult for preexisting life to survive or may have provided the necessary environmental crucibles for prebiotic chemistry and its evolution into life.

### INTRODUCTION

It has become increasingly clear that impact cratering has affected both the geologic and biologic evolution of our planet. Although this view has its roots in the Apollo era (Fig. 1; McLaren, 1970), it was not widely recognized until studies linked the mass extinction that defines the end of the Mesozoic Era with the Chicxulub impact event (L.W. Alvarez et al., 1980; Hildebrand et al., 1991). That particular event also illustrates how a process that destroys some organisms can create opportunities for other organisms—in this case leading to distinctly different ecosystems during the Cenozoic Era. This dual pattern of disaster and opportunity has existed with impact events throughout Earth history, even during the earliest development of life.

The biologic consequences of impact cratering depend on many factors, including the energy of the impact event, the type of target materials, the type of projec-



Figure 1. Earthrise over Smythii impact basin with Schubert impact crater on horizon. Views like this during Apollo missions made it clear that Earth is part of a planetary system rather than an isolated sphere, subject to the same bombardment that battered the surface of the Moon. (Apollo 11 AS11-44-6551)

tile, and the ambient conditions on Earth at the time of impact. Consequences can range from the death of individual organisms to the complete extinction of species. While the former can be the direct result of an impact event (e.g., shock wave-induced hemorrhaging and edema in an animal's lungs [Kring, 1997]), the more important biological effect, including extinction, will be through impact-generated environmental changes. To be an effective extinction mechanism, the environmental changes need to extend throughout a habitat range and exceed an

organism's ability to adapt (Newell, 1962). When the environmental effect is largely regional, the changes must overwhelm the migratory capacity of a species or last longer than its dormant capacity. When the effect transcends geographical boundaries and becomes global, the change must be rapid relative to the time scale of evolutionary adaptation or, again, last longer than the dormant capacity of a species. The minimum types of impact events needed to exceed these extinction thresh-

Impact Events *continued on p. 2*

**GSA TODAY** (ISSN 1052-5173) is published monthly by The Geological Society of America, Inc., with offices at 3300 Penrose Place, Boulder, Colorado. Mailing address: P.O. Box 9140, Boulder, CO 80301-9140, U.S.A. Periodicals postage paid at Boulder, Colorado, and at additional mailing offices. Postmaster: Send address changes to *GSA Today*, Membership Services, P.O. Box 9140, Boulder, CO 80301-9140.

Copyright © 2000, The Geological Society of America, Inc. (GSA). All rights reserved. Copyright not claimed on content prepared wholly by U.S. Government employees within the scope of their employment. Permission is granted to individuals to photocopy freely all items other than the science articles to further science and education. Individual scientists are hereby granted permission, without royalties or further requests, to make unlimited photocopies of the science articles for use in classrooms to further education and science, and to make up to five copies for distribution to associates in the furtherance of science; permission is granted to make more than five photocopies for other noncommercial, non-profit purposes furthering science and education upon payment of a fee (\$0.25 per page-copy) directly to the Copyright Clearance Center, 222 Rosewood Drive, Danvers, MA 01923 USA, phone (978) 750-8400, <http://www.copyright.com>; when paying, reference *GSA Today*, ISSN 1052-5173. Written permission is required from GSA for all other forms of capture, reproduction, and/or distribution of any item in this publication by any means, including posting on authors' or organizational Web sites, except that permission is granted to authors to post the abstracts only of their science articles on their own or their organization's Web site providing the posting includes this reference: "The full paper was published in the Geological Society of America's news-magazine, *GSA Today* [include year, month, and page number if known, where article appears or will appear]." GSA provides this and other forums for the presentation of diverse opinions and positions by scientists worldwide, regardless of their race, citizenship, gender, religion, or political viewpoint. Opinions presented in this publication do not reflect official positions of the Society.

**SUBSCRIPTIONS** for 2000 calendar year: Society Members: *GSA Today* is provided as part of membership dues. Contact Membership Services at (888) 443-4472, (303) 447-2020 or [member@geosociety.org](mailto:member@geosociety.org) for membership information. Nonmembers & Institutions: Free with paid subscription to both *GSA Bulletin* and *Geology*, otherwise \$50 for U.S., Canada, and Mexico; \$60 elsewhere. Contact Subscription Services. Single copies may be requested from Publication Sales. Also available on an annual CD-ROM, (together with *GSA Bulletin*, *Geology*, GSA Data Repository, and an Electronic Retrospective Index to journal articles from 1972); \$89 to GSA Members, others call GSA Subscription Services for prices and details. Claims: For nonreceipt or for damaged copies, members contact Membership Services; all others contact Subscription Services. Claims are honored for one year; please allow sufficient delivery time for overseas copies, up to six months.

**STAFF:**

Chief Executive Officer: **Sara S. Foland**  
 Science Editors: **Karl E. Karlstrom**, Department of Earth and Planetary Science, University of New Mexico, Albuquerque, NM 87131-1116, [kek@unm.edu](mailto:kek@unm.edu); **Molly F. Miller**, Department of Geology, Box 117-B, Vanderbilt University, Nashville, TN 37235, [Molly.F.Miller@vanderbilt.edu](mailto:Molly.F.Miller@vanderbilt.edu)  
 Director of Publications: **Jon Olsen**  
 Managing Editor: **Jeanette Hammann**  
 Editorial Assistant: **Anika Burkard**  
 Production Manager: **Diane C. Lorenz**  
 Production Coordinator: **Gaynor Ann Bloom**  
 Graphics Production: **Gaynor Ann Bloom**  
 Contact one of the Science Editors listed above before submitting a science paper.

**ADVERTISING:** Classifieds and display: contact Ann Crawford, (303) 447-2020; fax 303-447-1133; [acrawford@geosociety.org](mailto:acrawford@geosociety.org).

Issues of this publication are available as electronic Acrobat files for free download from GSA's Web Site, <http://www.geosociety.org>. They can be viewed and printed on various personal computer operating systems: MSDOS, MSWindows, Macintosh, and Unix, using the appropriate Acrobat reader. Readers are available, free, from Adobe Corporation: <http://www.adobe.com/acrobat/readstep.html>.

GSA ONLINE: [www.geosociety.org](http://www.geosociety.org)

This publication is included on GSA's annual CD-ROM, *GSA Journals on Compact Disc*. Call GSA Publication Sales for details.



50% Total Recovered Fiber  
10% Postconsumer

Printed in U.S.A. using pure soy inks.

**IN THIS ISSUE**

**Impact Events and Their Effect on the Origin, Evolution, and Distribution of Life** ..... 1

**In Memoriam** ..... 2

**Memorial Volumes and Reprints** ..... 3

**Notice of Council Meeting** ..... 3

**Dialogue** ..... 6

**Penrose Conference Report—Volcanic Rifted Margins** ..... 8

**2001 Officer and Councilor Nominees** ..... 9

**About People** ..... 10

**Birdsall-Dreiss Distinguished Lecturer for 2001 Announced** ..... 11

**New GSA Congressional Science Fellow to Begin Term in September** ..... 12

**Science and Politics: A Personal Encounter** ..... 13

**A Vision for Geomorphology and Quaternary Science Beyond 2000** ..... 14

**Toward a Stewardship of the Global Commons, Part VIII** ..... 16

**Geoscience Day Scheduled for Reno Meeting** ..... 17

**GSA's First Distinguished High School Earth Science Educator in Residence** ..... 18

**GSA Names 2000 Medal and Award Recipients** ..... 19

**Field Forum Report** ..... 20

**Penrose Conference Scheduled** ..... 22

**Planned Giving Options** ..... 24

**Donors to the Foundation, May 2000** ... 25

**Rock Stars** ..... 26

**Letters** ..... 28

**New GSA Fellows** ..... 29

**New GSA Members** ..... 29

**Summit 2000** ..... 33

**Time Change: President's Student Breakfast** ..... 33

**New GSA Student Associates** ..... 34

**GSA Bulletin Adopts New Page Charge Policy** ..... 35

**August Bulletin and Geology Highlights** ..... 35

**Hypoxia in the Gulf of Mexico: Causes, Consequences, and Political Considerations** ..... 36

**Calendar** ..... 38

**Classified Advertising** ..... 38

**In Memoriam**

Elwood Atherton  
Urbana, Illinois

Kenneth F. Keller  
Houston, Texas  
April 6, 2000

Carl V. Mueller  
Pueblo West, Colorado  
April 7, 2000

Felix E. Mutschler  
Cheney, Washington  
May 9, 2000

Peter E. Wolfe  
Nesco, New Jersey  
February 27, 2000

*Please contact the GSA Foundation for information on contributing to the Memorial Fund.*

**Impact Events continued from p. 1**

olds are not yet known. However, many of the environmental effects that could lead to extinction, particularly in the case of the Chicxulub impact event at the K-T boundary, have been identified.

**THE CHICXULUB IMPACT EVENT**

**Regional Effects**

The Chicxulub impact occurred on a shallow carbonate shelf that is now part of the Yucatán Peninsula (Hildebrand et al., 1991). In the immediate vicinity of the crater, the shock wave, air blast, and heat produced by the impact explosion killed many plants and animals. The air blast, for example, flattened any forests within a 1000–2000 km diameter region (Emiliani

et al., 1981), which would have included the highlands of Chiapas, central Mexico, and the gulf states of the United States. Tsunamis also radiated across the Gulf of Mexico basin, producing reworked or unusually high energy sediments along the latest Cretaceous coastline (e.g., Smit and Romein, 1985; Bourgeois et al., 1988; Smit et al., 1992). Tsunamis were 100–300 m high as they crashed onto the gulf coast (Bourgeois et al., 1988; Matsui et al., 1999) and ripped up seafloor sediments down to depths of 500 m (Smit, 1999). The backwash of these waves was tremendous, depositing forest debris in 400–500 m of water (Smit et al., 1992). The abyssal portion of the Gulf of Mexico basin (W. Alvarez et al., 1992), the neighboring proto-Caribbean (Hildebrand and Boynton, 1990), and Atlantic Ocean (Klaus

## Memorial Volumes and Reprints

"In the 1960 reorganization of the USGS Geologic Division, Linc became chief of the New England Branch. He and [wife] Esther moved to Melvin Village, New Hampshire, and weeknights Linc lived in his 'Penthouse' in the Back Bay in Boston. Randolph "Bill" Bromery was fascinated by and learned much from Linc in many discussions of the complex uranium-rich carbonates of the Cu-rich Shaba region of Zaire, including 'survival skills—using cognac for brushing our teeth, a unique and pleasant experience. Linc had very special humanity, and my life and career greatly benefited because our paths crossed.'"

—Excerpted from Lincoln Ridler "Linc" Page (1910–1996), by James W. Skehan, *Memorials*, v. 30



Each year, GSA publishes a volume containing memorials to deceased Fellows. Written by associates, friends, or relatives, *Memorials* contain fascinating stories and selected bibliographies of the deceased. These paperback volumes are available for purchase. See the GSA Bookstore on the Web at [www.geosociety.org](http://www.geosociety.org), or contact the GSA Member Service Center (see below) for information.

The following memorial reprints are now available, free of charge, by contacting the GSA Member Service Center. To order, e-mail [member@geosociety.org](mailto:member@geosociety.org), or call 1-888-443-4472 or (303) 447-2020, ext. 774. You may also fax a request to 303-443-1510 or mail to P.O. Box 9140, Boulder, CO 80301-9140, USA.

George W. Berry (1915–1999)  
*D.L. Blackstone Jr.*

Eugene N. Cameron (1910–1999)  
*John M. Guilbert*

Frederick William Cater Jr.  
(1912–1998)  
*Chester A. Wallace*

Jesse LeRoy Dally (1923–1999)  
*David J. Dally*

Edwin Lee Hamilton (1914–1998)  
*Edwin C. Buffington, Joseph R. Curray,  
and David G. Moore*

Bruce B. Hanshaw (1930–1998)  
*Jack H. Medlin, Dallas Peck, John Keith,  
Eugene Robinson, and Blair Jones*

Alan S. Horowitz (1930–1999)  
*N. Gary Lane and Donald E. Hattin*

William Hilton Johnson  
(1935–1997)  
*Allan F. Schneider and Ardith K. Hansel*

Lincoln Ridler Page (1910–1996)  
*James W. Skehan*

Frank Stanton Simons (1917–1995)  
*Warren B. Hamilton*

Laurence L. Sloss (1913–1996)  
W. Arthur White (1916–1998)  
*Randall E. Hughes and D.M. Moore*

## Notice of Council Meeting

Meetings of the GSA Council are open to Fellows, Members, and Associates of the Society, who may attend as observers, except during executive sessions. Only councilors, officers, and section representatives may speak to agenda items, except by invitation of the chair. Because of space and seating limitations, notification of attendance must be received by the Chief Executive Officer prior to the meeting.

The next meeting of the Council will be at 1 p.m., Monday, November 13, at the GSA Annual Meeting in Reno, Nevada.

CORRECTION: The fax numbers for registering for the 2000 GSA Annual Meeting in Reno are 303-443-1510 or 303-447-0648. An incorrect number was published on page 50 of the June issue of *GSA Today*.

GEOTRIP CANCELLATION: "Giant Steps Through Time," scheduled for September 16–October 1, 2000, has been cancelled.

et al., 2000) were also affected by the splashdown of impact ejecta, density currents, and seismically induced slumping of coastal margins (e.g., Smit et al., 1992) following magnitude 10 earthquakes (Kring, 1993). Within a few hundred kilometers of the Chicxulub crater, the thick blanket of ejecta was sufficient to exterminate life.

### Global Effects

While these effects devastated organisms in the Gulf of Mexico region, the most significant environmental perturbations were the direct and indirect result of ejected debris that rained through the atmosphere, as first postulated by L.W. Alvarez et al. (1980). This material was carried in a vapor-rich plume that rose through the atmosphere into space. Once above the atmosphere, it expanded on bal-

listic trajectories, enveloping the whole Earth as it fell back into the atmosphere. The impact ejecta was distributed globally in a pattern much different from that of volcanic plumes, which simply rise into the stratosphere and then spread into latitudinal bands. Calculations indicate that most of this material reaccreted to the top of the atmosphere over a three-day period (Durda et al., 1997), where it then settled to the ground over a longer period of time, depending on grain size. If a substantial portion of this dust was submicron in size, model calculations suggest the dust may have made it too dark to see for one to six months and too dark for photosynthesis for two months to one year, seriously disrupting marine and continental food chains and decreasing conti-

mental surface temperatures (Toon et al., 1982; Covey et al., 1990).

In addition to the dust in the vapor-rich plume of ejecta, several important gas species were entrained. The Yucatán Peninsula, near the Chicxulub impact site, consists of carbonate and anhydrite deposits that overlie a crystalline silicate basement, so the impact produced several climatically active gas components, including aerosol-producing SO<sub>2</sub> and SO<sub>3</sub>, greenhouse-warming CO<sub>2</sub> and H<sub>2</sub>O, and ozone-depleting Cl and Br (e.g., Brett, 1992; Pope et al., 1997; Pierazzo et al., 1998; Yang and Ahrens, 1998; Kring, 1999). The worst appears to have been the S species, which enhanced stratospheric S

Impact Events *continued on p. 4*

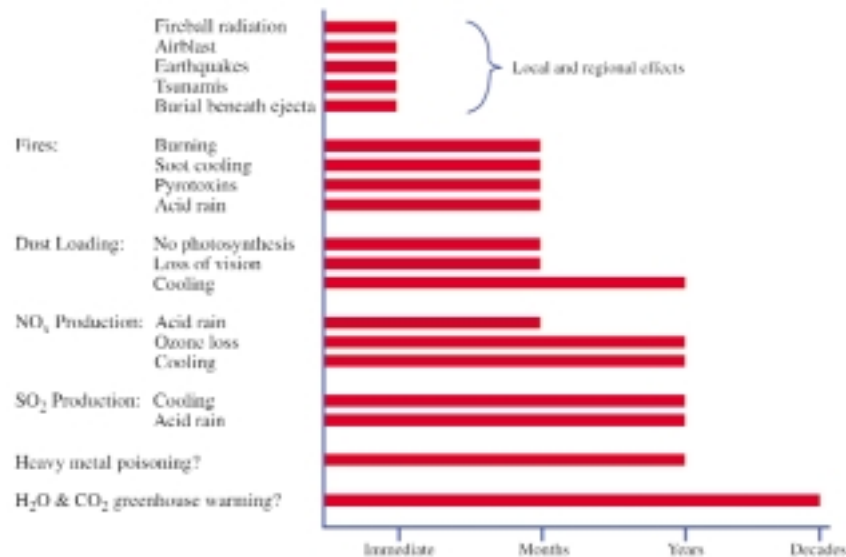


Figure 2. Relative time scales of several environmental perturbations caused by Chicxulub impact event.

### Impact Events *continued from p. 3*

on the order of  $10^5$ – $10^6$  times relative to modern abundances.

Sulfate aerosols were converted to sulfuric acid rain, whose effects compounded those produced by nitric acid rain. Nitric acid rain was produced from nitrous oxides that were created when the atmosphere was shock-heated by the impact event (Lewis et al., 1982; Prinn and Fegley, 1987; Zahnle, 1990). Acid rain could have defoliated continental vegetation and even aquatic plants in shallow, inadequately buffered lakes or seas whose entire water columns became acidic. Asphyxiation of animals by nitrous oxides and toxic poisoning by metals acid-leached from the ground have also been suggested (Prinn and Fegley, 1987), possibly compounding the toxic effects of metals from the projectile (Erickson and Dickson, 1987). The amount of sulfuric acid was not, however, large enough to acidify oceans (D'Hondt et al., 1994; Pierazzo et al., 1998). The nitric acid production may have produced a pH of 3–4 in the upper 100 m, if maximum estimates are correct, but this also seems unlikely (D'Hondt et al., 1994).

Sulfate aerosols significantly reduced the amount of sunlight reaching Earth's surface and would have, thus, enhanced the effects of ejected dust particles and soot produced by fires (discussed later). Darkness and cooler temperatures produced by these particles were relatively short-term, lasting only a few years. On the other hand, there may have been a longer-term increase in temperatures because a large quantity of greenhouse gases were produced from vaporizing sediments (CO<sub>2</sub> and H<sub>2</sub>O), the projectile (CO<sub>2</sub> and H<sub>2</sub>O, depending on the type of asteroid or comet), shock heating of the atmo-

sphere (N<sub>2</sub>O), carbonates dissolved by acidic waters (CO<sub>2</sub>), and wildfires (CO<sub>2</sub> and N<sub>2</sub>O; discussed later). However, the magnitude of greenhouse warming is still uncertain.

In addition, ozone-depleting Cl and Br were produced from the projectile, target water, target sedimentary rocks, target basement rocks, and postimpact wildfires. The amount of Cl injected into the stratosphere is believed to be five orders of magnitude greater than that needed to destroy the modern ozone layer (Kring, 1999). However, this issue illustrates the current uncertainty of postimpact atmospheric conditions. While ozone may have been consumed by reactions with Cl, Br, and NO, reactions with dust and smoke particles, and heating by reentering debris and accompanying thermal radiation and increased solar absorption, the effects may also have been mitigated by ice, which briefly enhances planetary albedo, dust and smoke, which absorb solar radiation, NO<sub>2</sub>, which strongly absorbs part of the ultraviolet spectrum, and sulfate aerosols, which scatter solar radiation. At the moment, there is a good list of the perturbing elements injected into the atmosphere, but the complex micro-

chemical reactions that occurred have not been modeled.

On the ground, however, it is clear there were postimpact fires. Charcoal and soot, which are produced when vegetation or fossil carbon are burned, have been found in K-T boundary sediments around the world (e.g., Tschudy et al., 1984; Wolbach et al., 1990). Theoretical calculations suggest these fires were ignited by intense thermal radiation produced by ejecta reentering the atmosphere on ballistic trajectories (Melosh et al., 1990). Fires consumed large quantities of latest Cretaceous vegetation, burned many animals, and robbed herbivores of their food. Fires would have produced several secondary effects too, absorbing sunlight, possibly inhibiting photosynthesis, lowering atmospheric temperatures, and producing organic pyrotoxins (Wolbach et al., 1990).

As this brief review illustrates, several impact-caused perturbations on the ground and in the atmosphere could have contributed to the K-T boundary extinctions (Figs. 2 and 3). However, it was likely the combination of primary and secondary effects that was so deleterious. Different parts of the global environment would have been perturbed over diverse time scales (e.g., days for reentering impact ejecta, months for dust in the stratosphere, and years for sulfate acid aerosols). The initial effects would be added to and amplified by secondary effects and the ensuing collateral damage. The biological consequence of the Chicxulub impact was the collapse of entire ecosystems; cascading effects destroyed the infrastructure of the biosphere (e.g., collapse of food chains, loss of habitat), compounding the initial direct environmental effects. Thus, while the physical effects of the impact event may have been relatively short-lived, the time needed to reestablish chemical gradients,

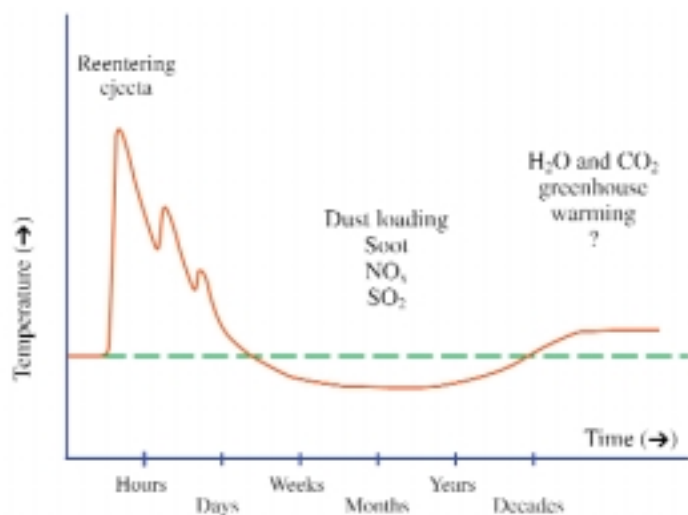


Figure 3. Thermal excursions produced by Chicxulub impact event as a function of time. Preimpact ambient temperature is marked with a dashed line.

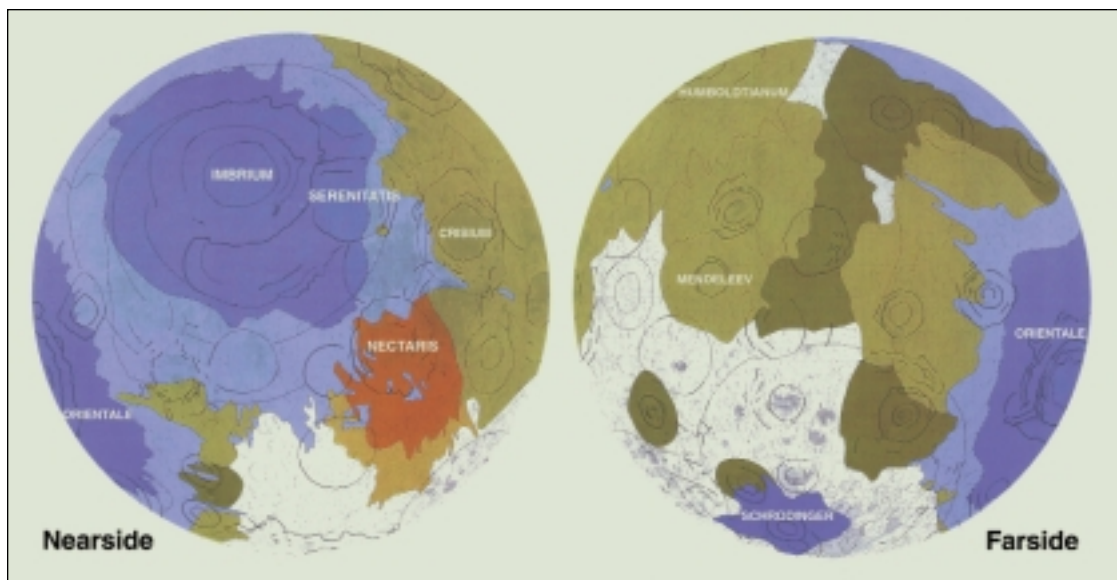


Figure 4. Maps showing regions of the Moon that were resurfaced during Nectarian Period (brown) and Imbrian Period (blue), and outlines of larger basins. Also shown are pre-Nectarian units (darkest brown) and areas of unclear stratigraphic relationships (gray) (Wilhelms, 1987).

repair food chains, and rebuild integrated ecosystems was much greater.

The details of the biologic crisis and its recovery are difficult to tease from the geologic record, but some progress is being made. Impact cratering theory suggests the crisis was global and, indeed, marine bivalve extinction intensities are global without any latitudinal or geographic variations (Raup and Jablonski, 1993). In both marine and continental settings, organisms with dormant or resting states fared better through the crisis. For example, planktonic diatoms that produce resting spores specialized to persist in benthic or deep-pelagic environments of low- to no-light conditions, and, during periods of stress, had a high survival rate (Kitchell et al., 1986). It has also been suggested that the loss of primary productivity and the subsequent collapse of food chains had much less an effect on organisms that were detritus feeders or starvation resistant (Sheehan et al., 1996). The recovery of these survival species, however, did not represent the full recovery of the ecosystem with robust food chains and attendant biochemical gradients. For example, it appears that while marine production may have recovered relatively quickly (albeit with a completely different population of organisms), the flux of organics to the deep sea took approximately three million years to recover (D'Hondt et al., 1998).

Among plants in the western interior of North America, the record of survival and recovery is marked by a dramatic increase in the ratio of fern spore to angiosperm pollen (Orth et al., 1981; Tschudy et al., 1984). The pioneering behavior of the ferns after the impact-generated wildfires is similar to their behavior after forest fires today. In Canada, both ferns and angiosperm taxa behaved in an opportunistic fashion

depending on the preimpact plant community, suggesting the vegetation recovered from local seeds and spore, rather than being repopulated from distant communities (Sweet and Braman, 1992). Gymnosperms were generally lost at the boundary, suggesting the swamp forest canopy was destroyed for several years (Sweet and Lerbekmo, 1999), even at sites ~4000 km from the impact.

#### LIFE'S ORIGINS

The Chicxulub event is an example of how impact cratering can affect life and is likely to be only one of five to six such events during the Phanerozoic (Kring, 1995). Impact cratering also had an important effect much earlier in Earth history when life was initially being established. A particularly intense period of bombardment appears to have occurred ~3.9 Ga, which almost completely reset the U-Pb system in lunar highland samples in the Apollo collection (Tera et al., 1974). The event also seems to have put an upper limit on the ages of surviving impact melts in the Apollo collection (Ryder, 1990; Dalrymple and Ryder, 1993). While the concept of a cataclysm has been controversial (Baldwin, 1974; Hartmann, 1975), recent analyses of impact melts in lunar meteorites (Cohen et al., 2000), which represent a much larger fraction of the Moon, have the same age limit and support a planetwide impact cataclysm.

The initial stage of intense impact cratering on the Moon is known as the Nectarian Period (3.8–3.9 Ga), which began with Nectaris impact and ended with Imbrium impact (Wilhelms, 1987). This period is believed to have been <200 Ma long (Tera et al., 1974; Wilhelms, 1987), during which time at least 1700 craters >20 km diameter were produced, including at least 12 impact basins far

larger than Chicxulub (Fig. 4; Wilhelms, 1984, 1987). The number of impacts occurring on Earth would have been an order of magnitude larger, implying >10,000 large impact events. This was followed by the Early Imbrian Epoch, which began with the Imbrium impact and ended with the Orientale impact, again roughly 3.8–3.9 Ga, producing additional basin-size craters on the order of 1000 km diameter. These large impact events also produced swarms of secondary craters with diameters >20 km (e.g., Wilhelms, 1987), which were also large enough to cause dramatic effects. Impact events of these sizes on Earth would have been large enough to have affected the environment and most likely any life that had arisen. The largest impact events probably produced immense quantities of ejecta, temporarily charged the atmosphere with silicate vapor, and boiled away large quantities of surface water (Sleep et al., 1989; Sleep and Zahnle, 1998).

Interestingly, the earliest isotopic evidence of life on Earth comes from this same period of time (e.g., Mojzsis and Harrison, 2000). In addition, ribosomal RNA analyses of the most deeply branching organisms suggest that life is rooted among thermophilic or hyperthermophilic forms. Commonly, this is interpreted to mean that life originated (or survived the impact bombardment in) volcanic hydrothermal systems. However, during the period of bombardment, impact-generated hydrothermal systems were possibly more abundant than volcanic ones. The heat source driving these systems is the central uplift and/or pools of impact melt. In the case of a Chicxulub-size event (among the smallest ~3.9 Ga), melt pools may have driven a hydrothermal system for  $10^5$  yr (Kring, 1995). The

Impact Events *continued on p. 6*



© Paul Abdoon

"To learn geology one must travel widely and observe carefully, for geology is learned through the soles of your shoes, not the seat of your pants! The Earth is vast, its features, varied. One must climb mountains, travel over limitless plains, watch the waves of the sea beat unendingly upon the shore, study the work of mountain torrents as they carry their load to the sea, and learn to read the character of the rock record to understand the Earth. Delve deeply into the rocks, for truth is hidden there. Take heed to observe carefully the seemingly insignificant things, as each and every phenomenon and event is an integral part of nature's process. Be untiring in your zeal to learn; and when you have accumulated facts, give careful thought to their interpretation. Let all your work be marked by ceaseless patience, tireless industry, vigilant caution, and prolonged study. Nature's deeds are not erratic. What occurs is ruled by laws. When one is trained to read the geologic record, the deeds of nature become clear, usually simple, and amenable to understanding and description. The Earth gives no higher or nobler task than to study nature, to unlock her secrets and interpret her deeds."

—Walter L. Manger et al.  
*University of Arkansas Sigma Gamma Epsilon Initiation Ceremony*

## Service at GSA: Support for Students



Jack May and Julie Williams May

Over the past several months, we've talked about GSA's values of science and stewardship. This month, we're ready to look at the third of our three Ss, which is service. One significant form of service GSA and its members perform is support for the professional growth and development of young geoscientists.

Exploring this topic with me are Jack May and Julie Williams May, both spring 2000 graduates of the University of Arkansas. Julie earned a B.A. in geology and a B.S. in earth science (cum laude); Jack received his M.S. in geology. They married in May and now live in Columbia, South Carolina, where Jack is pursuing a Ph.D. in geology and Julie a master's degree in environmental resource management at the University of South Carolina.

**Sara:** I started out as a student member of GSA, and I remember how valuable that experience was for me. What stands out for you about membership in GSA?

**Jack:** We've been student members for the last three years, and GSA has provided us with lots of opportunities to interact with geologists in industry, academia, and government research. We attended the 1999 South-Central Section meeting in Lubbock, the 1999 annual meeting in Denver, and this past spring we helped host the South-Central Section meeting in Fayetteville.

**Julie:** Interacting at these meetings with professional members from so many different environments has helped us get a sense of "career." It has helped with everything from making a commitment to the field of geology to developing interests in specific sub-disciplines and formulating career plans. All those exhibitors at meetings make gathering information easy, and travel grants help with the cost of getting there on a student budget.

**Jack:** The mentoring sessions have been particularly useful. I've talked one-on-one with people working for the U.S. Geological Survey, environmental consulting firms, and in the petroleum industry. I've asked what their jobs were like, what they'd do if they were just starting out, and whether continuing my education to the Ph.D. level is worthwhile. The sessions also covered practical matters like résumé writing.

**Sara:** In fact, GSA's mentoring programs are intended to give you perspective and the skills you need in addition to your geoscience expertise. In funding these programs, I think Roy Shlemon was looking for a way to help young geoscientists begin making the transition from student to professional.

**Jack:** Certainly another growth experience for me came from presenting some of my research on sedimentation on the California continental borderland at a poster session in Denver last year.

**Sara:** Many of us had our first sweaty-palm experience presenting research at a GSA meeting. Section meetings are particularly good for this because you can present to peers and faculty from outside your home institution in a relatively small and somewhat informal venue. The great thing is that everyone wants you to succeed and people are extremely supportive. A related aspect of GSA's support for students is our research grants program. Since the program began in 1933, GSA has awarded more than \$7 million to 6,800 students.

**Julie:** Jack and I have certainly enjoyed and benefited from our participation in GSA, and we intend to be lifetime members. See you in Reno!

## Impact Events *continued from p. 5*

dimensions of these systems can extend across the entire diameter of a crater and down to depths in excess of several kilometers (e.g., Komor et al., 1988; Pevzner et al., 1992). Large regions within these systems should have had appropriate temperatures for thermophilic and hyperthermophilic organisms. When the craters were subaerially exposed, the hydrothermal systems probably vented in mud pots, hot springs, and geysers, similar to those in volcanic terranes. When the craters were filled with freshwater lakes or marine incursions, the hydrothermal systems

probably vented subaqueously, like those in volcanic crater lakes or deep-sea vents. In addition to providing a suitable environment for thermophilic and hyperthermophilic forms of life, it has been suggested that the impacting objects may have seeded the surface of Earth with amino acids and other important organic materials (e.g., Chyba, 1993; Pierazzo and Chyba, 1999).

## CONCLUSIONS

Impact cratering is a very energetic geologic process that has the capability of disrupting or redirecting the biologic evolution of a planet. In the case of the

Chicxulub impact event 65 Ma, a large number of regional and global environmental effects were generated that were likely the cause of the mass extinction that marks the K-T boundary. The potential for disrupting the environment was larger and more frequent earlier in Earth history, particularly ~3.9 Ga when life with thermophilic and hyperthermophilic characteristics evolved. This implies that life either originated in these impact-dominated conditions or possibly that these forms of life were the type best suited to survive this brief period of intense bombardment. In the latter case, life may have originated under different

conditions in different environments and only found itself frustrated by impact cratering (Maher and Stevenson, 1988; Chyba, 1993) as it was by Chicxulub.

## ACKNOWLEDGMENTS

I thank Maria Schuchardt at the Space Imagery Center, University of Arizona, for assistance with the figures. I also thank Richard Grieve, at Natural Resources Canada, and Steven D'Hondt, at the University of Rhode Island, for their help with the manuscript.

## REFERENCES CITED

- Alvarez, L.W., Alvarez, W., Asaro, F., and Michel, H.V., 1980, Extraterrestrial cause for the Cretaceous-Tertiary extinction: *Science*, v. 208, p. 1095-1108.
- Alvarez, W., Smit, J., Lowrie, W., Asaro, F., Margolis, S.V., Claeys, P., Kastner, M., and Hildebrand, A.R., 1992, Proximal impact deposits at the Cretaceous-Tertiary boundary in the Gulf of Mexico: A restudy of DSDP Leg 77 Sites 536 and 540: *Geology*, v. 20, p. 697-700.
- Baldwin, R.B., 1974, Was there a "terminal lunar cataclysm" 3.9-4.0 x 10<sup>9</sup> years ago?: *Icarus*, v. 23, p. 157-166.
- Bourgeois, J., Hansen, T.A., Wiberg, P.L., and Kauffman, E.G., 1988, A tsunami deposit at the Cretaceous-Tertiary boundary in Texas: *Science*, v. 241, p. 567-570.
- Brett, R., 1992, The Cretaceous-Tertiary extinction: A lethal mechanism involving anhydrite target rocks: *Geochimica et Cosmochimica Acta*, v. 56, p. 3603-3606.
- Chyba, C.F., 1993, The violent environment of the origin of life: Progress and uncertainties: *Geochimica et Cosmochimica Acta*, v. 57, p. 3351-3358.
- Cohen, B.A., Swindle, T.D., and Kring, D.A., 2000, <sup>40</sup>Ar/<sup>39</sup>Ar ages from laser step-heat experiments on lunar meteorite impact melt clasts (extended abstract): Houston, Texas, Lunar and Planetary Institute, Lunar and Planetary Science XXXI, Abstract #1922, CD-ROM.
- Covey, C., Ghan, S.J., Walton, J.J., and Weissman, P.R., 1990, Global environmental effects of impact-generated aerosols: Results from a general circulation model, in Sharpton, V.L., and Ward, P.D., eds., *Global catastrophes in Earth history: An interdisciplinary conference on impacts, volcanism, and mass mortality*: Boulder, Colorado, Geological Society of America Special Paper 247, p. 263-270.
- Dalrymple, G.B., and Ryder, G., 1993, <sup>40</sup>Ar/<sup>39</sup>Ar age spectra of Apollo 15 impact melt rocks by laser step-heating and their bearing on the history of lunar basin formation: *Journal of Geophysical Research*, v. 98, p. 13,085-13,095.
- D'Hondt, S., Pilson, M.E.Q., Sigurdsson, H., Hanson, A.K. Jr., and Carey, S., 1994, Surface-water acidification and extinction at the Cretaceous-Tertiary boundary: *Geology*, v. 22, p. 983-986.
- D'Hondt, S., Donaghay, P., Zachos, J.C., Luttenberg, D., and Lindinger, M., 1998, Organic carbon fluxes and ecological recovery from the Cretaceous-Tertiary mass extinction: *Science*, v. 282, p. 276-279.
- Durda, D.D., Kring, D.A., Pierazzo, E., and Melosh, H.J., 1997, Model calculations of the proximal and globally distributed distal ejecta from the Chicxulub impact crater: *Lunar and Planetary Science XXVIII*, p. 315-316.
- Emiliani, C., Kraus, E.B., and Shoemaker, E.M., 1981, Sudden death at the end of the Mesozoic: *Earth and Planetary Science Letters*, v. 55, p. 317-334.
- Erickson, D.J. III, and Dickson, S.M., 1987, Global trace-element biogeochemistry at the K-T boundary: Oceanic and biotic response to a hypothetical meteorite impact: *Geology*, v. 15, p. 1014-1017.
- Hartmann, W.K., 1975, Lunar "cataclysm": A misconception?: *Icarus*, v. 24, p. 181-187.
- Hildebrand, A.R., Penfield, G.T., Kring, D.A., Pilkington, M., Camargo Z., A., Jacobsen, S., and Boynton, W.V., 1991, Chicxulub Crater: A possible Cretaceous-Tertiary boundary impact crater on the Yucatán Peninsula, Mexico: *Geology*, v. 19, p. 867-871.
- Hildebrand, A.R., and Boynton, W.V., 1990, Proximal Cretaceous-Tertiary boundary impact deposits in the Caribbean: *Science*, v. 248, p. 843-847.
- Kitchell, J.A., Clark, D.L., and Gombos, A.M. Jr., 1986, Biological selectivity of extinctions: A link between background and mass extinction: *Palaos*, v. 1, p. 504-511.
- Klaus, A., Norris, R.D., Kroon, D., Smit, J., 2000, Impact-induced mass wasting at the K-T boundary: Blake Nose, western North Atlantic: *Geology*, v. 28, p. 319-322.
- Komor, S.C., Valley, J.W., and Brown, P.E., 1988, Fluid-inclusion evidence for impact heating at the Siljan Ring, Sweden: *Geology*, v. 16, p. 711-715.
- Kring, D.A., 1993, The Chicxulub impact event and possible causes of K-T boundary extinctions, in Boaz, D., and Dorman, M., eds., *Proceedings of the First Annual Symposium of Fossils of Arizona*: Mesa, Arizona, Mesa Southwest Museum and Southwest Paleontological Society, p. 63-79.
- Kring, D.A., 1995, The dimensions of the Chicxulub impact crater and impact melt sheet: *Journal of Geophysical Research*, v. 100, p. 16,979-16,986.
- Kring, D.A., 1997, Air blast produced by the Meteor Crater impact event and a reconstruction of the affected environment: *Meteoritics and Planetary Science*, v. 32, p. 517-530.
- Kring, D.A., 1999, Ozone-depleting chlorine and bromine produced by the Chicxulub impact event: *Meteoritics and Planetary Science*, v. 34, p. A67-A68.
- Lewis, J.S., Hampton Watkins, G., Hartman, H., and Prinn, R.G., 1982, Chemical consequences of major impact events on Earth, in Silver, L.T., and Schultz, P.H., eds., *Geological implications of impacts of large asteroids and comets on the Earth*: Boulder, Colorado, Geological Society of America Special Paper 190, p. 215-221.
- Maher, K.A., and Stevenson, D.J., 1988, Impact frustration of the origin of life: *Nature*, v. 331, p. 612-614.
- Matsui, T., Imamura, F., Tajika, E., Nakano, Y., and Fujisawa, Y., 1999, K-T impact tsunami: Houston, Texas, Lunar and Planetary Institute, Lunar and Planetary Science XXX, Abstract #1527, CD-ROM.
- McLaren, D.J., 1970, Presidential address: Time, life, and boundaries: *Journal of Paleontology*, v. 44, p. 801-815.
- Melosh, H.J., Schneider, N.M., Zahnle, K.J., and Latham, D., 1990, Ignition of global wildfires at the Cretaceous-Tertiary boundary: *Nature*, v. 343, p. 251-254.
- Mojzsis, S.J., and Harrison, T.M., 2000, Vestiges of a beginning: Clues to the emergent biosphere recorded in the oldest known sedimentary rocks: *GSA Today*, v. 10, no. 4, p. 1-6.
- Newell, N.D., 1962, Paleontological gaps and geochronology: *Journal of Paleontology*, v. 36, p. 592-610.
- Orth, C.J., Gilmore, J.S., Knight, J.D., Pillmore, C.L., Tschudy, R.H., and Fassett, J.E., 1981, An iridium abundance anomaly at the palynological Cretaceous-Tertiary boundary in northern New Mexico: *Science*, v. 214, p. 1341-1343.
- Pevzner, L.A., Kirjakov, A.F., Vorontsov, A.K., Masaitis, V.L., Mashchak, M.S., and Ivanov, B.A., 1992, Vorotilovskaya drillhole: First deep drilling in the central uplift of large terrestrial impact crater: *Lunar and Planetary Science XXIII*, p. 1063-1064.
- Pierazzo, E., and Chyba, C.F., 1999, Amino acid survival in large cometary impacts: *Meteoritics and Planetary Science*, v. 34, p. 909-918.
- Pierazzo, E., Kring, D.A., and Melosh, H.J., 1998, Hydrocode simulation of the Chicxulub impact event and the production of climatically active gases: *Journal of Geophysical Research*, v. 103, p. 28,607-28,625.
- Pope, K.O., Baines, K.H., Ocampo, A.C., and Ivanov, B.A., 1997, Energy, volatile production, and climatic effects of the Chicxulub Cretaceous-Tertiary impact: *Journal of Geophysical Research*, v. 102, p. 21,645-21,654.
- Prinn, R.G., and Fegley, B. Jr., 1987, Bolide impacts, acid rain, and biospheric traumas at the Cretaceous-Tertiary boundary: *Earth and Planetary Science Letters*, v. 83, p. 1-15.
- Raup, D.M., and Jablonski, D., 1993, Geography of end-Cretaceous marine bivalve extinctions: *Science*, v. 260, p. 971-973.
- Ryder, G., 1990, Lunar samples, lunar accretion and the early bombardment of the Moon: *Eos (Transactions, American Geophysical Union)*, v. 71, p. 313, 322-323.
- Sheehan, P.M., Coorough, P.J., and Fastovsky, D.E., 1996, Biotic selectivity during the K-T and Late Ordovician extinction events, in Ryder, G., et al., eds., *The Cretaceous-Tertiary event and other catastrophes in Earth history*: Boulder, Colorado, Geological Society of America Special Paper 307, p. 477-489.
- Sleep, N.H., Zahnle, K.J., Kasting, J.F., and Morowitz, H.J., 1989, Annihilation of ecosystems by large asteroid impacts on the early Earth: *Nature*, v. 342, p. 139-142.
- Sleep, N.H., and Zahnle, K., 1998, Refugia from asteroid impacts on early Mars and the early Earth: *Journal of Geophysical Research*, v. 103, p. 28,529-28,544.
- Smit, J., 1999, The global stratigraphy of the Cretaceous-Tertiary boundary impact ejecta: *Annual Reviews of Earth and Planetary Science*, v. 27, p. 75-113.
- Smit, J., and Romein, A.J.T., 1985, A sequence of events across the Cretaceous-Tertiary boundary: *Earth and Planetary Science Letters*, v. 74, p. 155-170.
- Smit, J., Montanari, A., Swinburne, N.H.M., Alvarez, W., Hildebrand, A.R., Margolis, S.V., Claeys, P., Lowrie, W., and Asaro, F., 1992, Tektite-bearing, deep-water clastic unit at the Cretaceous-Tertiary boundary in northeastern Mexico: *Geology*, v. 20, p. 99-103.
- Sweet, A.R., and Lerbekmo, J.F., 1999, Extinctions and perturbations in terrestrial plants, K-T interval, North America: *Geological Society of America Abstracts with Programs*, v. 31, no. 7, p. A-240.
- Sweet, A.R., and Braman, D.R., 1992, The K-T boundary and contiguous strata in western Canada: Interactions between paleoenvironments and palynological assemblages: *Cretaceous Research*, v. 13, p. 31-79.
- Tera, F., Papanastassiou, D.A., and Wasserburg, G.J., 1974, Isotopic evidence for a terminal lunar cataclysm: *Earth and Planetary Science Letters*, v. 22, p. 1-21.
- Toon, O.B., Pollack, J.B., Ackerman, T.P., Turco, R.P., McKay, C.P., and Liu, M.S., 1982, Evolution of an impact-generated dust cloud and its effects on the atmosphere, in Silver, L.T., and Schultz, P.H., eds., *Geological implications of impacts of large asteroids and comets on the Earth*: Boulder, Colorado, Geological Society of America Special Paper 190, p. 187-200.
- Tschudy, R.H., Pillmore, C.L., Orth, C.J., Gilmore, J.S., and Knight, J.D., 1984, Disruption of the terrestrial plant ecosystem at the Cretaceous-Tertiary boundary, western interior: *Science*, v. 225, p. 1030-1032.
- Wilhelms, D.E., 1984, Moon, in Carr, M.H., ed., *The geologic history of the terrestrial planets*: Washington, D.C., National Aeronautics and Space Administration Special Paper 469, p. 107-205.
- Wilhelms, D.E., 1987, The geologic history of the Moon: U.S. Geological Survey Professional Paper 1348, 302 p. plus plates.
- Wolbach, W.S., Gilmore, I., and Anders, E., 1990, Major wildfires at the Cretaceous-Tertiary boundary, in Sharpton, V.L., and Ward, P.D., eds., *Global catastrophes in Earth history: An interdisciplinary conference on impacts, volcanism, and mass mortality*: Boulder, Colorado, Geological Society of America Special Paper 247, p. 391-400.
- Yang, W., and Ahrens, T.J., 1998, Shock vaporization of anhydrite and global effects of the K-T bolide: *Earth and Planetary Science Letters*, v. 156, p. 125-140.
- Zahnle, K.J., 1990, Atmospheric chemistry by large impacts, in Sharpton, V.L., and Ward, P.D., eds., *Global catastrophes in Earth history: An interdisciplinary conference on impacts, volcanism, and mass mortality*: Boulder, Colorado, Geological Society of America Special Paper 247, p. 271-288.

Manuscript received May 7, 2000; accepted June 7, 2000. ■

## Volcanic Rifted Margins

**Conveners:** *M.A. Menzies and C. Ebinger, Department of Geology, Royal Holloway, University of London, Egham, Surrey TW20 OEX, England, UK*  
*S. Klemperer, Department of Geology, Royal Holloway, University of London, Egham, Surrey TW20 OEX, England, UK, and Department of Geophysics, Stanford University, Stanford, CA 94305-32215, USA*

Active rifting (plume-driven) models are the traditional explanation for the formation of volcanic rifted margins with significant surface uplift occurring prior to flood volcanism and break-up extension. However, recent research on volcanic rifted margins indicates that their evolution is more complex than that defined by earlier models, and several hybrid models have been proposed. At the Penrose 2000 Volcanic Rifted Margin Conference held at Royal Holloway, University of London, discussion centered on the margins of the north, central, and south Atlantic Ocean, the western and eastern coasts of Australia, the southern Red Sea, the west coast of India and its conjugate margins in Madagascar and the Seychelles. The characteristic features of volcanic rifted margins were summarized and it was agreed that formation of a volcanic rifted margin required complete rifting of a continent to form an ocean above an upper mantle with a temperature 100–200 °C above “normal” asthenosphere. This should be contrasted with rifting without additional thermal perturbation which leads to non-volcanic rifted margins (e.g., Newfoundland, Iberia) and thermal perturbations in



Unroofed Loch Ba center and late caldera on Mull, Scotland.

the absence of rifting which lead to formation of intraplate large igneous provinces in ocean basins (e.g., Ontong-Java oceanic plateau) and on continents (e.g., Siberian flood basalts).

### Continental Flood Volcanism, Underplating and Seaward-Dipping Reflector Sequences

Volcanic rifted margins are characterized by subaerial volcanic rocks (~4–6 km thick) on a continental margin. Ar-Ar and K-Ar dating indicates that, in the majority of volcanic rifted margins, 70%–80% of the subaerial mafic and/or basaltic volcanism occurred over a relatively short period of time (2 m.y. in the case of the Red Sea and East Greenland plateau lavas and <0.5 m.y. in the case of the Deccan). The short phase of basaltic volcanism is followed by a lengthy period of silicic volcanism that can last for 5–10 m.y. In some volcanic rifted margins, silicic volcanic rocks erupted from multiple caldera complexes tend to dominate the upper volcano stratigraphy (Argentina-Antarctica, eastern Australia, Etendeka-Namibia, Scotland, Yemen), but in the Parana-Etendeka and Ethiopia, silicic units are interbedded with the basaltic lava flows. In the Deccan and the British Tertiary the presence of ash layers in the volcano stratigraphy indicates “silicic” volcanism between periods of basalt volcanism. The switch from basaltic to silicic volcanism reveals the importance of high-level magma chambers and crustal melting in the formation of volcanic rifted margins of magma. In Etendeka, individual silicic eruptive units have thicknesses of up to 100 m, aerial extents >8000 km<sup>2</sup> and volumes of 3000 km<sup>3</sup>, indicating large-scale explosive eruptions. Eruption rates in volcanic rifted margins have not been adequately constrained by volume-time studies of individual eruptive units and, as a first approximation,



Deccan volcanic stratigraphy exposed by scarp retreat at King Arthur's Seat, Mahabaleshwar.

thickness-time relationships reveal a marked decline in eruption rate from the mafic to the felsic eruptive stages of volcanic rifted margins. This is consistent with the requirement for longer time periods to allow basaltic magmas to pond in shallow magma chambers and to evolve toward silicic derivatives by a combination of fractionation processes and assimilation of surrounding basement and/or roof rocks. While the emplacement of thick mafic flows within volcanic rifted margins has no modern analogues, a possible explanation for the mechanism of emplacement may be found in the recently proposed “self-inflation” model for basaltic lavas (single or compound) with thicknesses ranging from 1 to 100 m (e.g., Etendeka, Deccan).

Underplating, or formation of an over-thickened oceanic layer 3 and adjacent stretched continental crust, is evident as distinctive high-seismic velocity (7.2–7.4 km/s) and associated gravity anomalies, but only sometimes by lower-crustal reflectivity. Because bright lower-crustal reflectivity can have other causes, surface denudation should be sought as independent verification of underplating. Magmatic underplating may involve multiple dike-sill systems, multiple igneous intrusions, or single magma bodies. In southeast Greenland, the maximum igneous crustal thickness varies from 30 to 40 km close to the thermal anomaly (i.e., track of Iceland hotspot), thinning to 18 km at 500–1000 km from the anomaly. On the northwest Australian margin, the underplated thickness is ~7 km near the



ocean-continent boundary. These thicknesses have been widely used to infer the magnitude of mantle temperature anomalies, but if average  $V_p$  is also measured, and used as a proxy for composition, one may also infer the degree of mantle upwelling. Along the Iceland hotspot track, there is a clear requirement for active upwelling, defined as a mantle upwelling velocity exceeding that due purely to the plate separation rate. In contrast, 500 km off the hotspot track, upwelling appears to be passive and can be explained purely by plate velocity. On the Greenland–northwest Europe conjugate margins, crustal-generation rates as high as 2000 km<sup>3</sup>/m.y. per km of margin occurred at breakup, declining rapidly over a few m.y. Magma production rates of volcanic rifted margins (i.e., per kilometer of active margin) seem similar to that of island arcs, but volcanic rifted margins are less effective in generating new continental crust because the total length of active arcs exceeds that of active volcanic rifted margins by a factor of 5–10.

Seaward-dipping reflector sequences, first recognized along the North Atlantic margin, are a characteristic of volcanic rifted margins and are recognized by reflectors which steepen and diverge downward to dips of over 15 degrees. These reflector packages reach up to a maximum estimated thickness of 10 km and extend for up to 200 km perpendicular to the margin and up to 4000 km along strike (e.g., Argentina-Brazil margin). Seaward-dipping reflector sequences are interpreted to be largely subaerial eruptions, and their seaward termination may typically mark the transition to submarine eruptions. The sequences may be predominantly volcanic rocks with associated sedimentary rocks. On the Namibian margin, models of seismic data, tested against magnetic data, suggest that the seaward-dipping reflector sequences package is a mixture of volcanic and sedimentary rocks, and on the Norwegian volcanic rifted margin, seismic sections have been interpreted as documenting a transition from subaerial to submarine volcanic deposits that comprise lavas and volcanoclastic sedimentary rocks. Underplating is an integral part of the architecture of volcanic rifted margins and, with the extrusive part of the sequences, is what may distinguish volcanic from nonvolcanic rifted margins. However, there are possible complications in margins like Sergipe-Alagoas, Brazil. The lack of pre- and synrift volcanics is a classic nonvolcanic margin characteristic while the thick wedges of postrift seaward-dipping reflectors are a classic volcanic margin characteristic.

## 2001 Officer and Councilor Nominees

Council announces the following officer and councilor candidates. Biographical information on all candidates is posted at [www.geosociety.org](http://www.geosociety.org), or available by calling (303) 447-2020, ext. 774, or 1-888-443-4472.

### PRESIDENT (2001)

*Sharon Mosher*, Austin, Texas

### VICE-PRESIDENT (2001)

*Tony Naldrett*, Toronto, Ontario

### TREASURER (2001)

*David E. Dunn*, Richardson, Texas

### COUNCILOR (2001–2003), POSITION 1

*Peter W. Lipman*, Menlo Park, California

*Samuel B. Mukasa*, Ann Arbor, Michigan

### COUNCILOR (2001–2003), POSITION 2

*John M. Bartley*, Salt Lake City, Utah

*Steven M. Colman*, Woods Hole, Massachusetts

### COUNCILOR (2001–2003), POSITION 3

*L. Peter Gromet*, Providence, Rhode Island

*Suzanne Mahlburg Kay*, Ithaca, New York

### COUNCILOR (2001–2003), POSITION 4

*Jaime Roldan-Quintana*, Hermosillo, Sonora

*Gerald M. Ross*, Calgary, Alberta

# VOTE!

### YOUR VOTE IS IMPORTANT!

Attention voting members: You should have received a postcard in the mail with instructions on how to access our secure Web site and your electronic ballot. The site also posts biographical information on each candidate and the 1999 GSA Annual Report. If you have not yet received these instructions, or if you need paper copies of the ballot and biographical information on the candidates, please contact us at (303) 447-2020, ext. 774, 1-888-443-4472, or [member@geosociety.org](mailto:member@geosociety.org).

Deadline: Ballots must be submitted electronically or postmarked by September 16.

### Plumes and Upwellings: Magmatism and Rifting

Melt production at volcanic rifted margins requires (1) mantle potential temperatures of 1400–1600 °C (which may or may not be expressed as geochemical or geophysical anomalies), and (2) lithospheric thinning to (or preexisting lithospheric thickness no more than) ~90 km to allow adiabatic decompression melting. Geophysical and geochemical data, backed up by theoretical modeling, support the presence of one (or more) plume(s) during the formation of the volcanic rifted margins of the Atlantic, the Red Sea, India-Seychelles, and the volcanic rifted margins in Antarctica. However, some controversy exists over the extent to which various geochemical parameters (e.g., helium-lead isotope ratios and trace-element parameters) can be used to define plumes. While magma geochemistry clearly indicates input from mantle and crustal sources, at present, geochemical and geophysical data cannot, to everyone's satisfaction, distinguish between core-mantle boundary plumes and upper-mantle upwellings related to topography at the lithosphere-asthenosphere boundary beneath continents. Overall, at the Penrose, geochemical and geophysical data were found to be far from conclusive when it came to deciphering the presence or absence of deep-mantle plume structures. What is clear is that thermal anomalies exist on Earth and that their distribution, shape, and size appear to be variable, and their duration and genesis manifest themselves to different degrees and in nonspecific order, in

the uplift/subsidence, extension/volcanism, of the lithosphere.

Some models of volcanic rifted margin formation that involve input from the mantle require that rifting and magmatism were essentially synchronous, but in many volcanic rifted margins (e.g., Yemen, North Atlantic, Australia), several million years lapsed between the onset of flood volcanism and widespread rifting. In the Parana-Etendeka, it can be argued that the Etendeka magmatic province was erupted prior to onshore rifting because the main volcanic units can be traced from the Etendeka into the Parana, so there could not have been major topographic depressions ponding sequences. Alternatively, it can be argued that the transcontinental correlation of eruptive units is possible because the rift topography was quickly blanketed by sheetlike eruptive units. While "offshore valley systems" appear to be filled with lavas and have been interpreted as evidence of rifting having predated volcanism, later deformation and faulting may explain the apparent "channeling" of units. On the North Atlantic volcanic rifted margins, basaltic volcanism overflowed the conjugate margins, as it did in the Deccan, and as such must be largely synrift. In the case of the volcanism associated with the central Atlantic Ocean (200 Ma) there is geochronological evidence that volcanism postdated rifting

Volcanic Rifted Margins  
*continued on p. 10*

## Volcanic Rifted Margins *continued from p. 9*

by 30 m.y. in some cases, but was synchronous with basin formation in others.

### Denudation = Surface Uplift-Rock Uplift

In many volcanic rifted margins, what we observe today are erosional remnants, and the degree of preservation is inextricably linked to climate, elevation, and the amount or rate of denudation. The youngest volcanic rifted margins (Ethiopia-Yemen) are characterized by incised 3-km-high uplifted flanks atop a broad plateau. Volcanic rifted margins formed at the Cretaceous-Tertiary boundary are characterized by major scarp retreat in India and an eroded mountain range in Scotland. The central Atlantic magmatic province in the eastern United States and West Africa was reduced to a feeder dike swarm during 200 m.y. of erosion. Within volcanic rifted margins, unconformities provide important temporal information about denudation and the potential supply of sediments to extensional basins. In some cases erosion post-dated the main magmatic episode and was synchronous with breakup extension (e.g., Yemen), and in other volcanic rifted margins (e.g., eastern Australia) erosion and sediment input (i.e., with >1.4 million km<sup>3</sup>) into adjacent or preexisting sedimentary basins coincided with the main magmatic episode.

Apatite fission track analyses and U-Th/He dating are used to quantify the timing and rate of denudational processes (tectonic and erosional) as measures of crustal cooling, and cosmogenic isotopes are used to date paleosurfaces (e.g., Decan). Fission-track dating has been applied to many volcanic rifted margins and, whereas young, hot volcanic rifted margins (e.g., Yemen) have a relatively simple cooling history, older and colder volcanic rifted margins tend to have a more complex cooling history that may be difficult to unravel (e.g., United Kingdom-Green-

land, India). Studies in Antarctica indicate that landscape evolution was very slow with a cessation to scarp retreat in the past 15 m.y. On the Yemen margin of the Red Sea, denudation peaked in the Miocene during breakup, with scarp retreat determining landscape evolution since that time.

Theoretical models require 500 m–2 km of uplift prior to, or concurrent with, magmatism depending on proximity to the plume head or stem and lithospheric heating. To properly understand rock and/or surface uplift, constraints must be placed on the prerift paleogeography (relative to sea level) and the denudational history. According to the prevolcanic sedimentary rock record of eastern Greenland and Scotland, the southern Red Sea, and north, west, and east Australia, the pre-breakup continental masses were close to sea level. However, it is apparent that some variation existed in the North Atlantic as west Greenland is characterized by incised fluvial systems, east Greenland by a landscape close to sea level and northwest Scotland-Faeroes by a low-relief, vegetated land surface. In Yemen, a shoreline existed close to the present location of a mountain range (~3 km) but, judging from paleocurrent information and the maturity of the prevolcanic sediments in Yemen, a hinterland must have existed in the Danakil horst, Eritrea. In contrast to these volcanic rifted margins, the Drakensburg mountains (South Africa) are believed to have inherited “relief” at the time of Gondwana breakup. While the nature of the Deccan-Seychelles land surface prior to breakup (relative to sea level) is unknown, in the Parana-Etendeka it is characterized by a large aeolian erg system.

Denudation coincides with the peak of extension in Yemen and eastern Australia, while in west Greenland, major unconformities beneath the volcanic rocks are associated with fluvial peneplanation and valley incision, indicating a period of substantial prevolcanic uplift and denudation. In Antarctica, landscape develop-

ment followed the onset of uplift and a change in base level. Scarp retreat, planation surfaces, and incision by fluvial systems produced a landscape that has changed little in 15 m.y. In the Deccan of India, some topographic expression must have existed, perhaps triggered by uplift, because palynological data indicate the presence of floodplain or lacustrine environments. The western Ghat escarpment is believed to have an erosional rather than a tectonic origin, and scarp retreat is believed to be the major determinant of landscape with the original continental margin ~75 km west of its present location. Thus, it appears that there may be spatial separation of plume head or stem material driving uplift and zones of melt generation (thinned lithosphere) within broad plume provinces.

### Characteristics of Volcanic Rifted Margins

The Penrose Conference participants concluded that the defining characteristic of a volcanic rifted margin (that which distinguishes it from a nonvolcanic margin) is the presence of a significantly greater thickness of new intrusive and extrusive igneous crust,  $\geq 10$  km, at a rifted margin than is formed in normal oceanic crust or nonvolcanic margins. However, as we learn more about the 3-dimensional crustal architecture of volcanic rifted margins, we should perhaps be identifying them as *magmatic* at all levels, rather than merely as *volcanic*. Nonetheless, Penrose 2000 suggests that the following observations are sufficiently common at volcanic rifted margins to be regarded as characteristic features:

- (a) Subaerial volcanic rocks reached 4–6 km in thickness on the continental margin prior to denudation.
- (b) Magmatic underplating, evident as high velocities (~7.4 km/s) in the lower crust interpreted as new mafic igneous crust—the intrusive counterpart of extrusive volcanic rocks on the continental margin or seaward-dipping reflector sequence in the continent-ocean transition.
- (c) 70%–80% of the erupted volume was emplaced over a 1–2 m.y. period, with basaltic magmas erupted from fissure systems. Individual eruptive units can be ~100 m thick and cover several 1000 km<sup>2</sup>.
- (d) Silicic volcanic rocks, erupted from caldera-type complexes, can be a significant part of the upper (and lower) volcano stratigraphy of volcanic rifted margins (Ethiopia-Yemen, Parana-Etendeka, eastern Australia) with individual eruptive units comprising 100s to 1000s km<sup>3</sup>.

## About People

Member John W. Gibson Jr. was named president and CEO of Landmark Graphics Corporation, a supplier of integrated exploration and production technical and economic software designed to help petroleum companies worldwide find, produce, and manage oil and gas reservoirs.

Member Robbie R. Gries has been elected president-elect of the Association of Petroleum Geologists for the 2000–2001 term. She will serve as president of the association for the 2001–2002 term.

Member Thomas L. Wright, a consultant in San Anselmo, California, received the American Association of Petroleum Geologists' (AAPG) Michel T. Halbouty Human Needs Award. Wright was honored at the 85th AAPG Annual Convention in New Orleans on April 17. The Michel T. Halbouty Human Needs Award honors an individual for the outstanding application of geology to the benefit of human needs, recognizing scientific excellence.

Volcanic Rifted Margins  
*continued on p. 11*

# Birdsall-Dreiss Distinguished Lecturer for 2001 Announced

Steve Ingebritsen has been selected as the 2001 Birdsall-Dreiss Lecturer. Ingebritsen received a B.A. degree in geology from Carleton College and M.S. and Ph.D. degrees in hydrogeology from Stanford University. He has been a member of the U.S. Geological Survey (USGS) since 1980 and is currently chief of Regional Research, Water Resources Division, Western Region. He is author, along with Ward Sanford, of the textbook *Groundwater in Geologic Processes* (Cambridge University Press, 1998).

Ingebritsen will offer the two lectures detailed below. The first describes an ongoing study of crustal permeability done in collaboration with Craig Manning, a metamorphic petrologist with the University of California at Los Angeles. The second relates to a recent USGS circular on land subsidence, done in collaboration with Devin Galloway, David Jones, and many others. To request a visit to your institution during the tour, contact

Steve Ingebritsen directly at (650) 329-4422, or seingebr@usgs.gov. The GSA Hydrogeology Division pays transportation expenses; the host institution is expected to provide for the lecturer's local expenses. Liberal arts colleges are particularly encouraged to participate.

## LECTURE TOPICS

### *The Permeability of the Continental Crust*

The variation in permeability with depth in the crust can be probed indirectly with (1) hydrologic models that use geothermal data as constraints, and (2) the progress of metamorphic reactions driven by fluid flow. These data indicate that, in orogenic belts,  $\log k = -14 - 3.2 \log z$ , where  $k$  is in meters squared and  $z$  is in km. This relation implies that typical metamorphic fluid-flux values are consistent with fluid pressures significantly above hydrostatic values; that the

metamorphic carbon dioxide flux may be sufficient to affect climate; and that there is a significant capacity for diffuse degassing of Earth in tectonically active regions.

### *Land Subsidence in the United States*

From the San Francisco Bay Delta to the Florida Everglades, and from upstate New York to Houston, illustrative case studies describe three basic mechanisms by which human manipulation of groundwater causes land subsidence: groundwater withdrawal, dewatering and oxidation of organic soils, and dissolution collapse of susceptible materials. In the United States, subsidence due to these mechanisms affects more than 40,000 square kilometers in 45 states and causes at least \$125 million in annual damage. Interferometric Synthetic Aperture Radar (InSAR) is a powerful new tool for assessing and mitigating subsidence. ■

## Volcanic Rifted Margins *continued from p. 10*

- (e) Rift flank uplifts atop broad plateaus reach up to 4 km above sea level and act as a source for clastic sediments in adjacent extensional basins. Some of this uplift is permanent as opposed to time-decaying thermal uplift. A gradual decrease in the elevation of these mountains away from the rift axis is evident in both young and/or active (i.e., Ethiopia, Yemen) and old and/or inactive (i.e., Greenland and Scotland) volcanic rifted margins.
- (f) Seaward-dipping reflector sequences appear to consist of a mixture of volcanic rocks (lavas  $\pm$  ignimbrites), volcanoclastic and nonvolcanic sedimentary rocks.

- (g) The ocean-continent boundary is abrupt (e.g., Greenland, East Coast of the United States, Namibia).
- (h) Magmatism and rifting in volcanic rifted margins are not necessarily synchronous. Magmatism may predate rifting by several million years, may be synchronous with rifting, or may post-date rifting.
- (i) Prior to formation of the volcanic rifted margin, the continental land masses were close to sea level (Yemen, east Greenland, United Kingdom, Etendeka) and displayed a variety of sedimentary environments (e.g., fluvial, aeolian, etc.).
- (j) Kilometer-scale uplift prior to magmatism is not demonstrable on most volcanic rifted margins, but uplifted and rapidly denuded continental margins are observed, indicating that uplift

and/or base-level change is a vital part of the formation of volcanic rifted margins.

- (k) Unroofing of mantle rocks is not observed in volcanic rifted margins in contrast to at least some non-volcanic margins (e.g., Iberia, northern Red Sea).

Ultimately, the degree to which we search for similarities or distinctions between different volcanic rifted margins may owe as much to our personal philosophical predilections, whether we are by nature "lumpers" or "splitters," than to the existence of an underpinning geological truth.

## Acknowledgments

This report stems from a Penrose Conference held at the Department of Geology, Royal Holloway, University of London, on March 28-29, 2000.

## Conference Participants

Mohamed Al-Kadasi  
Abdulkarim Al-Subbary  
Don Anderson  
Nicholas Arndt  
Laurence Audin  
Dereje Ayalew  
Joel Baker  
Christian Berndt  
Wouter Bleeker  
Scott Bryan  
Jean-Paul Callot  
Joe Cartwright  
James Chalmers  
Gilles Chazot  
John Chesley  
Branko Corner  
Jenny Cripps

Ian Davison  
Yildirim Dilek  
Cecile Doubre  
Cindy Ebinger  
John Encarnacion  
Richard England  
Manuel Fernandez  
Paul Fitzgerald  
Mary Fowler  
Frederick Frey  
Kerry Gallagher  
Laurent Geoffroy  
Rhiannon George  
Linda Hanley  
Chris Hawkesworth  
Lara Heister  
Steve Holbrook

Jake Hossack  
Sarah James  
Claude Jaupart  
Priya Javeri  
Alistair Jeffcoate  
Dougal Jerram  
Garry Karner  
Seifu Kebede  
Bruno Kieffer  
Simon Klemperer  
Kim Knight  
Biswaketan Kundu  
Nick Kusznir  
Hans Christian Larsen  
Philip Leat  
Frank Lisker  
Isabelle Manighetti

Andrea Marzoli  
Ken McClay  
Greg McHone  
Leone Melluso  
Martin Menzies  
Daniel Miggins  
Webster Mohriak  
Jean-Paul Montagner  
Clive Neal  
Soenke Neben  
Andy Nyblade  
Sanjaya Pattanayak  
David Peate  
Raphaël Pik  
Teal Riley  
Pierre Rochette  
Richard Single

Robert Smith  
K.V. Subbarao  
Michael Summerfield  
Roger Swart  
Christian Tegner  
Mengist Teklay  
Gary Thompson  
Montserrat Torne  
Robert Trumbull  
Ingrid Ukstins  
Mike Watkeys  
Nicky White  
Robert White  
Pierre Wiert  
Mike Widdowson  
Ellen Wolfenden



Congressional Science Fellow  
Rachel Sours-Page

## New GSA Congressional Science Fellow to Begin Term in September

*Rachel Sours-Page, of Oregon State University (OSU), is the 2000–2001 GSA–USGS Congressional Science Fellow. Sours-Page grew up in the San Francisco Bay Area and graduated from The College Preparatory School in Oakland, California. She attended Harvey Mudd College and neighboring Pomona College where she received a B.S. in geology. As an undergraduate, she served as student liaison to geology department faculty and as dormitory president. During 1994 and 1995, she participated in the Keck Undergraduate Research Program and completed her senior thesis on the petrology of the Mount McLaughlin region of southwestern Oregon.*

In 1995, Sours-Page enrolled in OSU's Department of Geosciences' Ph.D. program and worked as both a teaching and research assistant. Her research focused on the use of olivine and plagioclase-hosted melt inclusions in the understanding and determination of mantle and crustal processes at mid-ocean ridges. Active in OSU's student government, Sours-Page served as both the graduate representative to the geosciences department faculty and proxy senator for the Graduate Student Senate. She also became a founding member of the Coalition of Graduate Employees, the labor union for OSU graduate employees.

Sours-Page is interested in the interface between science and public policy, with emphasis on environmental issues, including sustainable living, renewable resources, and the preservation of natural habitats. As a staff member working directly with Washington decision makers, she will be well positioned to help bridge the communication gap that often exists between scientists and their legislators, while furthering her own education in science policy and government issues. "I'm honored to receive the GSA–USGS Congressional Science Fellowship and am excited by the opportunity to represent the geology community," Sours-Page said. Look for perspective articles from Sours-Page in upcoming issues of *GSA Today*.

### The Fellowship

The Congressional Science Fellowship, funded by GSA and a grant from the U.S. Geological Survey, was established in 1986. Rachel Sours-Page, named as the 2000–2001 fellow, is the 15th person to take on the challenge of applying scientific and technical expertise to a wide range of public policy issues.

Fellows can and do directly impact public awareness of earth science and related issues. For an account of one fellow's influence, see "Science and Politics: A Personal Encounter," on p. 13.

The fellowship places highly qualified scientists in the offices of individual members of Congress and committees for a 12- to 15-month appointment. While fellows explicitly do *not* represent special interests, they do play a professional role for GSA during their appointment by bringing issues and perspectives to the attention of GSA headquarters staff, our members, and staff members from the USGS. In exchange for the opportunity to acquire experience and the chance to contribute to the formulation of public policy, fellows bring to the position special knowledge, skills, and competence. Fellows report periodically to the GSA membership and to the USGS on geoscience issues facing Congress and on the positive roles available for all earth scientists in policy formulation.

To prepare for their assignments, fellows attend a two-week orientation conducted by the American Association for the Advancement of Science. Fellowship requirements include an exceptional competence in some area of the earth sciences, cognizance of a broad range of issues outside their particular areas, and a strong interest in working on a range of public policy programs.

In alignment with GSA's Strategic Plan, the Institute for Earth Science and the Environment administers the Congressional Science Fellow program and supports our members' activities and interests in public policy. For additional information on this program and other science and policy topics, see "Policy and Government Affairs" in the Public Interest section of the GSA Web site ([www.geosociety.org](http://www.geosociety.org)). ■

## Call for Applications!

*Looking to expand your professional horizons? ♦ Believe in serving society through science? ♦ Ready for a unique challenge?*

**Apply for GSA's Congressional Science Fellowship 2001–2002.**

Put your expertise and experience to work helping shape science and technology policy on Capitol Hill. Work directly with national and international leaders.

The Congressional Science Fellow will be selected from top competitors early in 2001. Successful candidates are GSA members who possess either a Ph.D. in the earth sciences or a related field, or a Master's degree in the earth

sciences or a related field with at least five years of professional experience. If you possess this professional background, have experience in applying scientific knowledge to societal challenges, and share a passion for helping shape the future of the geoscience profession, GSA invites your application. The fellowship is open to U.S. citizens or permanent residents of the U.S. *The deadline to apply is February 2, 2001.*

To learn more about the Fellow experience, contact David Verardo, 1997–1998 GSA Congressional Science Fellow, at (703) 625-6105 or [dverardo@geosociety.org](mailto:dverardo@geosociety.org).

For application information, check our Web site at [www.geosociety.org/science/csf/scifello.htm](http://www.geosociety.org/science/csf/scifello.htm) or contact Karlon Blythe, Program Officer, GSA Headquarters, (303)-447-2020, ext. 136, or [kblythe@geosociety.org](mailto:kblythe@geosociety.org).

# Science and Politics: A Personal Encounter

Ann Boylan

How many of us are politically active? More important, how many of us are even politically aware? As a geoscientist working for an elected official, I know how underrepresented we are in the political world.

The journey that brought me out of the laboratory and into the political arena involved a series of serendipitous encounters with several geologists who turned out to be helpful mentors. It began while I was earning a bachelor's degree in geology from the Department of Geography and Earth Science of George Mason University (GMU) in Fairfax, Virginia, located near the U.S. Geological Survey (USGS) National Center in Reston, Virginia. Like many GMU geology students under the guidance of Department Chair Rick Diecchio, I took advantage of the opportunity to gain valuable experience by working as a USGS laboratory assistant. I had the good fortune of working with Bill Orem, a biogeochemist who engaged his student assistants in every part of the research process. Between my education in the classroom and my education in the workplace, I learned a great deal about what it is to be a scientist.

When I filed my intent to graduate in the spring of 1998, however, I received disappointing news. Government policies dictated that I could not keep my job with the USGS unless I was enrolled in a degree program. I was crushed! I had intended to stay with the project for another year, then move to the West Coast with my husband. I loved my work at the Survey, and I did not want to start graduate school before I was ready in order to keep my job.

After a panicked call to the registrar's office and a scan of my transcripts, I signed up to complete a second bachelor's degree in government and international politics. Since many of my general electives had been in government and the social sciences, I could apply my previous work to this program and finish it in two semesters. I could keep my job at the USGS and pursue a whole new area of study that interested me. So began my odyssey into politics.

I was ready for anything. Except, that is, the negative responses I received from my fellow scientists. Many people told me I was crazy to study politics. Other geology students demanded to know why I did not select a more "useful" degree, such as biology. Co-workers laughed and wanted to know why I did not simply earn a certificate in computer skills at a technical college. Even a favorite geology professor greeted me on campus one day with a

chuckle, saying, "Funny, you don't look like a politician." Although most of this was in jest, I felt the negativity towards my choice was real. I would not go so far as to say I sensed an elitist attitude, but it was a separatist attitude. Everywhere I turned, I was reminded that geology and politics did not mix. Everywhere, that is, but in my government classes.

When I shared my story with the faculty and students of the government department, I was warmly received and felt buoyed by their enthusiasm for the fact that I was a geologist interested in political science. I delved deeper into the connections between my education, my scientific experience, and my role as a scientist in our democracy.

Then came another encounter that helped change my attitude. In 1998, Dave Verardo, the 1997–1998 GSA–USGS Congressional Science Fellow, came to GMU to celebrate the inaugural Earth Science Week by sharing his experiences in the office of U.S. Senator Ron Wyden of Oregon, the congressional sponsor of Earth Science Week. As I listened to Dave talk, I imagined myself in his position, doing the things he was doing. I was amazed by the stories of how science and policy fit together at some times and how different the perspectives were at others. I was hooked! I ran up to Dave at the end of his presentation and said, "You have the perfect job. How can I do what you do?" Dave laughed and invited me to visit the senator's office to discuss an internship. I visited and was offered an internship in Senator Wyden's Capitol Hill office. During the semester, I answered constituent mail and got a feel for the breadth of issues followed by a member of Congress in service to his constituents and the larger society. Although science and technology are in the mix of issues, they are only part of the larger fabric of important decisions facing Americans.

After graduation, my husband and I moved to Portland, Oregon, where I continue to work for Senator Wyden. During the past year in the senator's state office, I have had many opportunities to call upon my scientific background in helping constituents understand environmental issues and scientific principles. I have to admit, however, that in observing the workings of politics, what impresses me most is just how much influence people with limited scientific backgrounds have on environmental policy, and the tremendous effort they put forth to understand the science behind an issue and make informed decisions. I also now realize that science is

## Internships: Help Form Sound Policy Through Sound Science

GSA is launching a new program to help undergraduate geoscience students work as interns with their congressional representatives in Washington, D.C., and in their home districts. See "Science and Politics: A Personal Encounter" for a first-person account of the rewards of internship. For more information, contact Ann Boylan, a caseworker in the Portland, Oregon, office of U.S. Senator Ron Wyden (D-OR), at [Ann\\_Boylan@wyden.senate.gov](mailto:Ann_Boylan@wyden.senate.gov).

For information about programs in public policy at GSA, please contact Cathleen May, (303) 447-2020, ext. 195, [cmay@geosociety.org](mailto:cmay@geosociety.org), or Dave Verardo, (703) 625-6105, [dverardo@geosociety.org](mailto:dverardo@geosociety.org).

only part of an environmental issue. Socioeconomic considerations play an important role, as does the freedom elected officials have to choose a course of action regardless of any "expert opinion." In general, I see a tremendous need for scientists to be involved with decision makers early in the formulation of policy ideas. In this way, misunderstandings of fundamental science can be minimized.

Scientists must become more active in policy. Thousands of political staff members across the country are reading and researching, trying to be a part of *our* world. We need to make an effort to be a part of *theirs* by helping them understand geoscience. We need to know more than who our representatives are. We need to know where they stand on issues that are important to us. Our role as citizens does not end on election day. We need to actively participate in our government. We need to call, write, and visit our senators and representatives—both on Capitol Hill and in their state offices. We need to do this with our state and local government representatives as well.

The professional benefit I receive in observing the interface of science and public policy firsthand is incalculable. It is an experience I urge more geoscientists to pursue and be encouraged to pursue. The office of every member of Congress is open to interns. Whether one works for a city, state, or federal elected official matters little so long as one takes the opportunity to intern. In doing so, we will begin to build better scientists, better citizens, and better policies. I am not saying that an army of undergraduate geology interns can change the face of science policy today. But an army of politically savvy geoscientists can change the future of policy tomorrow. Every day I spend working in public policy is a lesson in government that I will take with me throughout my career. It is an experience that would be beneficial for many new scientists. ■

# A Vision for Geomorphology and Quaternary Science Beyond 2000

Report of NSF-sponsored workshop, University of Minnesota, February 2–4, 1999

Robert S. Anderson, University of California at Santa Cruz, rsand@earthsci.ucsc.edu

Emi Ito, University of Minnesota, eito@umn.edu

Humans have achieved the ability to alter the planet in significant ways and have built in the path of some of nature's most destructive processes. In most places on Earth, the regolith on which terrestrial biota depends is only a few centimeters to meters thick. This thin layer of dirt can evolve chemically, and it is mobile. These facts have squarely embedded geomorphology, the study of Earth's surface and the processes that shape it, and the Quaternary sciences, the study of the history of Earth's surface through the last two million years, within research on global change. These sciences can and must act as the link between the solid Earth, the biological system, and the climate system.

We propose two new initiatives for surficial processes research at the National Science Foundation (NSF). These will constitute bold new steps that recognize the role these sciences should play in both near-term and longer-term understanding of the Earth system. The initiatives represent an unprecedented level of interaction and commitment to integrated research within the surficial-processes community.

## PREDICTIVE EARTH SURFACE DYNAMICS

We propose a community-level effort to develop and test landscape models for predicting mass fluxes and landform change at time scales ranging from individual storm events to millions of years. These general models would serve both as a fundamental framework for exploration of landscape evolution and as a practical tool for addressing pressing environmental problems. This proposal has two complementary initiatives: Whole Basin Dynamics and Sustainable Landscapes. A crucial element in common between these initiatives is the required close cooperation between the quantitative geomorphology and the Quaternary geology communities. In addition, we suggest four distinct infrastructure facilities common to and necessary for both initiatives.

### Whole Basin Dynamics: A Community Initiative in Surficial Processes

Landscapes are inherently dynamic. This dynamism reflects the combination of tectonic processes that move rock with respect to base level, and a suite of physical and chemical surficial processes that alter the state of the rock and move it

about on hillslopes and in rivers, glaciers and coastlines. Over long time scales, the net effect of such processes is to sculpt the landscape. While the study of surface processes is a mature field, much of the work has focused on individual elements of the landscape, with little attempt to integrate among the elements. In addition, we are only beginning to explore how geomorphic processes are affected by biota. We envision a community initiative to close some of the gaps in our current understanding and to focus on more integrated studies. The tasks will include both field studies and modeling. The key elements are:

- measurement of critical mass fluxes throughout a small set of carefully chosen transport systems (basins) over time spans long enough to include numerous transport events and hence long enough to characterize the response to the full probability distribution of events;
- quantitative approach to measuring transport processes, and casting of all processes in a quantitative formalism that connects explicitly to the meteorological forcing;
- integrated view of the geomorphic system that includes all key processes and hence involves the tectonics, physical geomorphology, low-temperature geochemistry, groundwater hydrology, and ecosystem biology;
- cooperative effort to integrate direct flux measurements with time-averaged measures of erosion and deposition in the system, as deduced from stratigraphic and geochronological studies; and
- use of the field and experimental data to constrain development of community landscape evolution models that could be used as general predictive tools.

Some general characteristics that field sites should have are:

- Manageable scale. An extremely small system would not include a sufficiently wide spectrum of processes to promote or to encourage generalization, while a continental scale system is likely to be too diverse and unwieldy.
- Active tectonics. Some field sites should be in areas with active tectonic uplift and subsidence. Such sites would allow exploration of the time scales over which mountain erosion achieves rough balance with uplift, if ever. The linkages must be forged between mountain ero-

sion and the transportation of the eroded debris across the foreland.

- Closure with respect to fluvial sediment. Careful construction of sediment budgets constitutes one of the strongest means of organizing information about the erosional and depositional system. While perfect closure with respect to sediment in natural basins is seldom achieved, proper choice of the study site with closure in mind is preferred.
- Variation in fluvial transport mechanism. Fluvial transport is the dominant mechanism of mass transfer between the erosional and depositional parts of the geomorphic system. While we will therefore emphasize fluvial systems, the fact that the fluvial system forms the bottom boundary conditions for hillslopes explicitly links these systems.
- Land cover. The type and amount of vegetation influences not only the geomorphic processes operating in a basin, but their rates. It is critical not only to be aware of the role of vegetation in the observed process rates, but also of the vegetation history of a study site. Vegetation dynamics may well play a key role in setting the lags between climatic events and the sedimentary response of the system. We seek interactions with the biological community in developing both better empirical data sets and a theoretical understanding of these dynamics.

Community landscape evolution models should have the following characteristics:

- While they may vary with respect to time and spatial scales addressed, they should all have common conceptual elements. Effort should be made to unify varying approaches, and to encourage modular structure so that improved representations of particular processes could be readily incorporated.
- Ambitious integrated models that seek to include biological, chemical, and physical processes.
- A commitment on the part of the surface-processes community to work on standardized interfaces and programming protocols for computer modeling.
- Both field and experimental studies are required to constrain the proper physics

Vision continued on p. 15



# MiniFlex

## Desktop Powder Diffractometer

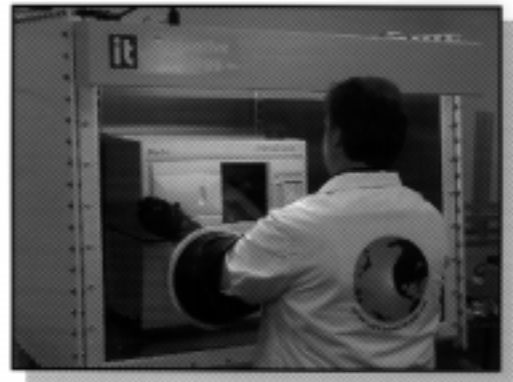
*Making X-ray Diffraction  
more accessible to everyone*

**High Performance and Simple Operation in a Compact Configuration**

- Extremely easy-to-use
- Exceptional low-angle performance
- Portable
- Plug-and-play, 110V operation
- Affordable



Rigaku/USA Inc.  
9009 New Trails Drive  
The Woodlands, Texas 77381  
Tel: 281-367-2685 Fax: 281-364-3628  
E-mail: info@rigaku.com Web: www.rigaku.com



Vision *continued from p. 14*

and chemistry, and to determine empirical constants relevant to the system.

### Sustainable Landscapes: Landscapes at the Human Time Scale

This initiative is motivated by the need to develop the science to restore and protect landscape functions in order to sustain natural resource use and ecosystem functionality. We lack, however, both the theoretical framework and the field data to predict landscape change on human time scales. With this initiative we attempt to encourage a communitywide focus on building theoretical tools, obtaining fundamental field data, and communicating advances, in both our conceptual understanding of the system and in the technologies to monitor it, to practitioners. A strong educational component to the initiative recognizes that land use and ecosystem function issues have wide appeal to students; we will strive to provide them opportunities to participate in both the development of theory and its application to human-scale issues. The Sustainable Landscapes program has three components.

- Reference landscape. We need full, high-resolution characterization of the topographic and subsurface bedrock

fields that serve as the stage for the near-term geomorphic play.

- Landscape forecasting. Event-based predictions of runoff and erosion that can lead to the prediction of the sites of initiation and the paths of landslides, and the extent of inundation by water and debris in floods.
- Landscape prediction. Decadal- to century-scale prediction of the landscape processes and functions under various land-use and global climate change scenarios.

We propose a "2050 project" to predict major landscape changes that would occur in the face of the expected changes in the greenhouse gas content of the atmosphere. This exercise requires collaboration with the general circulation model and hydrological communities, policy experts and planners, and ecosystem biologists. An added collaborative opportunity with industries such as hydroelectric power and insurance companies should be explored.

### INFRASTRUCTURAL SUPPORT

#### Chronologies, Database, and Sample Curation

Chronology is fundamental to understanding both the rates of change and the correlation of events separated geographically.

The standard chronological tool, accelerator mass spectrometry (AMS) <sup>14</sup>C dates, needs calibration because <sup>14</sup>C ages vary by 3000 years or more from calendar dates. While correlation with dendrochronology and U-series chronology has made the calibration to calendar ages fairly reliable back to the Last Glacial Maximum (18 ka), this effort must be continued. We are not at present capable of testing synchronicity of events in terrestrial records beyond the Last Glacial Maximum. This requires that sites with datable records be identified at geographically widespread locations. Demand for AMS dates far exceeds the capacity.

Many landscape events cannot be dated by <sup>14</sup>C. Cosmogenic isotopes such as <sup>10</sup>Be, <sup>26</sup>Al, <sup>36</sup>Cl, and <sup>3</sup>He have revolutionized our understanding of geomorphic processes and climatic timing in both high-altitude and arid landscapes. U-series dating has reenergized the study of past sea-level changes, and has provided chronological control to the study of uplift of tectonically active coastal areas. Methods such as thermal luminescence and optically stimulated luminescence are now providing ages of flood and loess deposits. Fission-track counting has proven useful in studies of long-term exhumation. However, the laboratories

Vision *continued on p. 16*

## Engaging “My Neighbor” in the Issue of Sustainability Part VIII: We Are a Part of, Not Apart From, the Global Ecosystem

A.R. Palmer, *Institute for Cambrian Studies, Boulder, Colorado*

“Humans aren’t the only species on Earth; they just act like it.”

—Unknown

Prior to the agricultural revolution (about 10,000 years ago), humans had lived off the land for perhaps hundreds of millennia. Survival depended on knowledge of local ecosystems for hunting, food gathering, medical assistance, and shelter. The passage of time was measured by natural seasonal cycles; the rhythm of life was the rhythm of the seasons. We were an integral and integrated part of the global ecosystem.

With the invention of agriculture and accompanying technological innovations, villages and finally cities developed, artisans appeared, and social structures and communications became more elaborate. Exploitation of natural resources for enrichment of the human enterprise became a part of the more urbanized cultures. There seemed to be no limits to those resources. The creative human mind and the advent of commerce found increasingly more sophisticated ways to obtain the resources and to use them. Thus, today, although we are still integral parts of the system, we are less integrated. We are somewhat analogous to an exotic species that disrupts the ecosystems into which it is introduced.

One of the tragic and unintended consequences of the exponential increase (see Part III, *GSA Today*, v. 10, no. 3) in urbanization, particularly in the past century, has been the increasing isolation of human beings from the natural rhythms and conditions that both nurture and constrain them. This is especially true in the so-called developed world, where, aided by the ease and rapidity of transport of goods, our city markets have fresh vegetables, fruits, milk, and meat more or less continuously available. We have very little understanding of the unique combinations of soil, water, weather and climate that determine the seasons of harvest for the fruits and vegetables we enjoy directly, or of the processes which make it possible to bring meat and milk to our tables. We have even less of an understanding of the complex interaction among elements of the lithosphere, hydrosphere, and atmosphere that sustain populations of fish in our oceans and lakes.

Many of us are far removed from our heritage as peoples of the land. As a consequence, we are dependent on specialized technology, skilled artisans, global commerce, and large-scale exploitation of the commons (see Part I, *GSA Today*, v. 10, no. 1) for food, shelter, and clothing. Most of us have lost the knowledge needed to do even simple farming. That loss may come back to haunt us because large cities are the most vulnerable human

**WATER BASED HEAVY LIQUID**  
**sodium polytungstate**  
 $\text{Na}_6(\text{H}_2\text{W}_{12}\text{O}_{40}) \cdot \text{H}_2\text{O}$

**Advantages:**

- Simple & easy to handle. Re-usable many times.
- Adjustable to various densities from 1 to 3 g/ml.
- Water-based & stable in the pH-range from 2-14.
- Density gradient centrifugation can be used.
- Ecologically safe. Can be discarded easily.
- Excellent recovery rate of near 95%!
- 5% off on your first order with this Ad.

**Fields of use:**  
Used by Geologists, Geophysicists, Mineralogists, Paleontologists & Archaeologists in the fields of Geology & Geophysics, Oceanography & Forestry, Earth & Nuclear Science, Conodont Research since 1985.

**For further information & prices:**  
Tel: 818.786.7838 • Fax: 818.786.4343  
PO Box 56053 • Sherman Oaks, CA 91413 • USA  
www.sometu.com • e-mail:sometu@aol.com

**Lowest Price In America**

Vision *continued from p. 15*

engaged in these dating schemes are limited, and the wait for dates can be long.

The need for global databases is becoming critical in many disciplines. Databases serve a variety of functions. Beyond making data available, they provide a protocol for data collection such as the inclusion of the original lab analysis to enable, for example, chronological correlation of records dated by  $^{14}\text{C}$  at different times. Selected samples and relevant data should be archived in a publicly accessible facility. For certain types of samples, such as sediment cores and speleothems, curation facilities similar to those for Ocean Drilling Program cores can serve this function. The first such facility is taking shape at the University of Minnesota.

**High-Resolution Digital Topographic Mapping Resources**  
Topography is the fundamental data set that serves as the test of a theory of landscape evolution and as the template

on which all surface processes occur. Within the past decade, laser altimetry has come into its own as a tool for generating high-resolution digital elevation models at 2 m resolution. It is at this scale that many geomorphic processes act, as they can be strongly controlled by local gradients and local curvature of the landscape. A recent example of the utility of laser altimetry is in the mapping of shoreline change in central California during the 1997–1998 El Niño.

We propose that the NSF support a facility for the collection of 2-m-resolution digital elevation models. At present, remote sensing is expensive in terms of hardware, software, and training. Few facilities exist with the luxury of full-time, long-lived support of personnel to aid in the training of new users and to ensure continuity of the program.

**Shared or Centrally Managed Field Equipment**

Maintaining large stores of equipment is expensive. Such equipment includes deep-drilling equipment, and



habitats in a sustainable future. We—or our families—may have to learn again how to plant, nurture, harvest, and hunt. We may have to relearn how to live with the seasons and in balance with our surroundings.

The geological sciences have taught us that we live in a universe of change. This lesson is embodied in a beautiful paraphrase of a verse from the Qur'an (Sura 27; Aya 88): "In the presence of eternity, the mountains are as transient as the clouds." Geologic studies of the environmental record since the last deglaciation (about 13,000 years ago) show that this change includes global ecosystems (e.g., Ruddiman and Wright, 1987). Nature is quite dynamic and interactive. We need to understand that the complex of systems that makes up our present-day environment has never been steady state.

Increasingly sophisticated biological studies demonstrate that all organisms share some common elements, if only at the genetic level. Although we humans seem to feel and act as if we are distinct from all other organisms in the web of life, this is not really the case. If we look back in geologic time (see Part II, *GSA Today*, v. 10, no. 2), our self-determined uniqueness within the web blurs. This blur involves not only our biological relationships to other organisms, but also the cultural development of our human species. We are truly a fundamental part of the global ecosystem.

Once we come to terms with the imbalance we have created in the global ecosystem by failing to remember that our context is *within* that ecosystem, we can face the challenges of sustainability creatively.

#### REFERENCE CITED

Ruddiman, W.F., and Wright, H.E., Jr., eds., 1987, North America and adjacent oceans during the last deglaciation: Boulder, Colorado, Geological Society of America, *The Geology of North America*, v. K-3, 501 p. ■

various surveying and monitoring equipment. A centralized facility, if properly managed, would assist the scientists, and be cost effective for the NSF. This arrangement is similar to the Incorporated Research Institutions for Seismology, or IRIS, program in seismology, University NAVSTAR Consortium, or UNAVCO, in Global Positioning System studies, PICO (now VECO) for polar and arctic support, or Drilling, Observation, and Sampling of Earth's Continental Crust (DOSECC), Inc., in deep continental drilling.

#### National Laboratories for Experimental Surface Process Dynamics

At present, only a few major experimental facilities for the study of earth surface processes exist. These labs are expensive to maintain. It is important that these facilities are maintained and are accessible to the entire community on a competitive basis. We propose a small funding program that would facilitate the kind of open door policy that St. Anthony Falls Hydraulic Laboratory has implemented.

We expect many spin-off experimental studies from the proposed initiatives.

#### EDUCATION AND OUTREACH

Geomorphology and Quaternary sciences are among the most accessible of the geosciences. The recent spate of catastrophic events and unusual weather patterns has brought the topic of global change to the forefront of the public's consciousness. We must educate the public about the likely response to global changes, with the twin perspectives of the response to past climates, and of process-based theoretical research.

We see several levels and numerous formats for bringing geomorphology and the Quaternary sciences to the public. Effective visualizations can bring the geomorphic processes to colleges. Working with K-12 educators, these visualization efforts can be repackaged for elementary and secondary school students. Geomorphic processes can also be brought to the general public via numerous science and natural history museums.

## Geoscience Day Scheduled for Reno Meeting

Geoscience Day, a field trip for students from a middle school with a large proportion of minority students, will be held Wednesday, November 15, during the GSA Annual Meeting in Reno. This program, sponsored by the GSA Committee on Minorities and Women, began at the 1976 meeting in Denver, Colorado, when Lou Pakiser of the U.S. Geological Survey led the trip. At nearly every annual meeting since, geologists, many of them from minorities, have joined students and their teachers on day-long explorations of the geology of the host city. Thousands of youngsters have learned about geology and have had the opportunity to meet and interact with minority scientists. For many students, this has been their first exposure to geology and often the first time they have met a minority scientist.

Donations to support Geoscience Day can be sent to the GSA Foundation. If you are interested in participating in the program or otherwise supporting activities of the Committee on Minorities and Women, please contact Mary Dowse, Chairman, GSA Committee on Minorities and Women, Department of Natural Sciences, Western New Mexico University, Silver City, NM 88062, [dowsem@silver.wnmu.edu](mailto:dowsem@silver.wnmu.edu).

The initiatives we propose have major implications for civil and environmental engineering. What we learn from these initiatives will be shared in a series of workshops and short courses offered at professional meetings.

#### ACKNOWLEDGMENTS

This workshop, funded by the National Science Foundation's Division of Earth Sciences (NSF-EAR) Geology and Paleontology Program, was held at the University of Minnesota in February 1999. The authors organized the workshop, whose participants were Allan Ashworth, Thure Cerling, Peter Clark, Bill Dietrich, Russ Graham, Eric Grimm, Vance Holliday, Jim Knox, Jack Oviatt, Chris Paola, and Liz Safran. ■

# Diana Stordeur to Be GSA's First Distinguished High School Earth Science Educator in Residence

*Ann Cairns, Director of Communications and Marketing*

K-12 earth science teachers will soon have a new advocate at GSA. Diana Stordeur, science coordinator at Eaglecrest High School in Aurora, Colorado, has been selected as the inaugural Distinguished Earth Science Educator at GSA. Stordeur will take a leave from her position in the Cherry Creek School District, recognized for its excellence in science education, to work full time at GSA headquarters in Boulder during the 2000-2001 academic year. Subaru of America, Inc., a corporate sponsor, funds this new program.

Working with Science, Education, and Outreach staff members, GSA's Education Committee, and other members, Stordeur will help design our efforts to serve the K-12 geoscience education community, providing a much needed user perspective. Stordeur will also facilitate design of the GSA Web site for educators. It will serve as an information clearinghouse for teachers, directing them to a wide variety of resources—geoscience information, products for classroom use, and other services—on the Web.

"We have needed this kind of participation from the K-12 earth science education community for a long time," CEO Sara Foland said. "We want to make certain that GSA's efforts and resources go into activities and programs that match the priorities of earth science teachers. In order to get the program off to the

best possible start, we want to work with a local educator from a school district with a national reputation for excellence in science education."

Robert Ridky, chair of GSA's Education Task Force, is pleased to have Stordeur on board.

"The recent report of our task force identifies the development of teacher certification tracks within geoscience programs as a primary objective," he said. "Establishing discipline-based teacher education programs is also a national goal, one that is fully endorsed by the National Academy of Sciences and heavily supported by the National Science Foundation. Diana's background and experience makes her uniquely qualified to contribute to this important initiative."



Diana Stordeur

## Making a Difference

Stordeur holds a B.S. in geology from the State University of New York, Stony Brook, and an M.A. in secondary science education from Columbia University. Affiliated with Colorado's Cherry Creek School District since 1989, she has taught earth sciences, biology, advanced-placement biology, general science, and chemistry.

Stordeur is enthusiastic about bringing the classroom perspective into GSA, and sees this year as an opportunity to make a difference. "Consolidation and visibility of earth science resources for teachers are desperately needed," she said. "I'm also looking forward to acting as a bridge between such a venerable organization as GSA and earth science teachers around the country."

## Looking Ahead

Upon completion of her year at GSA, Stordeur will return to her school district and share what she has learned about available earth science education resources. She will be able to mentor her peers by conducting science academies for other educators at all levels in the district. She will also work to integrate the national standards for earth science education into the district's curriculum development process in response to new State of Colorado proficiency standards.

The Earth Science Educator program is part of GSA's long-standing commitment to support of earth science education. It will be ongoing, thanks to the generous support of Subaru of America. ■

**NEW**  
in the GSA Bookstore!

## Geology Terms

in English and Spanish  
Terminología Geológica  
en Español e Inglés

by Henry Aurand

Whether you are an armchair geologist or a seasoned professional, this pocket guide is a handy reference for describing a geological vocabulary in Spanish and English. Filled with useful tables, charts, and over 2,400 terms, this book is sure to become a well-thumbed resource.

A Sunbelt Pocket Guide

Order at the GSA Bookstore  
[www.geosociety.org](http://www.geosociety.org)  
Toll-free 1-888-443-4472  
Fax 303-443-1510

118 pages  
3-5/8"x5"  
Softcover  
Perfect bound  
ISBN: 9-932653-29-4  
Nonmember price: \$7.95  
Member price: \$6.36



Brought to you through the generosity of Subaru of America, Inc.

# GSA Names 2000 Medal and Award Recipients

***Society awards for 2000 will be presented to the following people at the GSA Annual Meeting in Reno in November.***

## PENROSE MEDAL

**Robert L. Folk**  
University of Texas at Austin

## DAY MEDAL

**Robert Stephen John Sparks**  
Montserrat Volcano Observatory

## DONATH MEDAL (YOUNG SCIENTIST AWARD)

**Basil Tikoff**  
University of Wisconsin—Madison

## NEW HONORARY FELLOW

**Gerhard Einsele**  
Geologisch-Paläontologisches Institut  
der Universität Tübingen

## GSA DISTINGUISHED SERVICE AWARD

**Suzanne Mahlburg Kay**  
Cornell University

**Lee R. Kump**  
Pennsylvania State University

**Bruce F. Molnia**  
U.S. Geological Survey, Reston

## GSA PUBLIC SERVICE AWARD

**Orrin H. Pilkey**  
Duke University

## RIP RAPP ARCHAEOLOGICAL GEOLOGY AWARD

**Richard L. Hay**  
Tucson, Arizona

## GILBERT H. CADY AWARD (COAL GEOLOGY DIVISION)

**Russell D. Dutcher**  
Carbondale, Illinois

## E.B. BURWELL, JR., AWARD (ENGINEERING GEOLOGY DIVISION)

**James P. McCalpin**  
GEO-HAZ Consultants

## GEORGE P. WOOLLARD AWARD (GEOPHYSICS DIVISION)

**Donald W. Forsyth**  
Brown University

## HISTORY OF GEOLOGY AWARD

**Hugh S. Torrens**  
Keele University

## O.E. MEINZER AWARD (HYDROGEOLOGY DIVISION)

**Francis H. Chapelle**  
U.S. Geological Survey, South Carolina

## G.K. GILBERT AWARD (PLANETARY GEOLOGY DIVISION)

**Laurence Soderblom**  
U.S. Geological Survey, Flagstaff

## KIRK BRYAN AWARD (QUATERNARY GEOLOGY AND GEOMORPHOLOGY DIVISION)

**Brian F. Atwater**  
University of Washington

## LAURENCE L. SLOSS AWARD FOR SEDIMENTARY GEOLOGY (SEDIMENTARY GEOLOGY DIVISION)

**George D. Klein**  
SED-STRAT Geoscience Consultants, Inc.

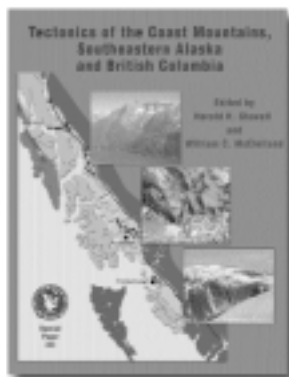
## STRUCTURAL GEOLOGY AND TECTONICS DIVISION CAREER CONTRIBUTION AWARD

**S. Warren Carey**  
Sandy Bay, Australia

For mailing addresses, call GSA at 1-888-443-4472.

## Coming soon!

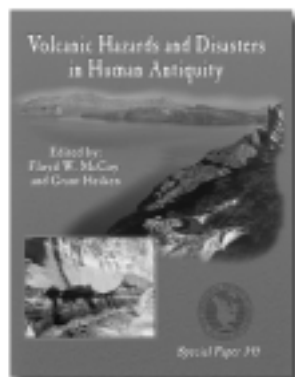
## The Geological Society of America



**SPE343**

### Tectonics of the Coast Mountains, Southeastern Alaska and British Columbia

*Edited by Harold H. Stowell  
and William C. McClelland*



**SPE345**

### Volcanic Hazards and Disasters in Human Antiquity

*Edited by Floyd W. McCoy  
and Grant Heiken*



**SPE346**

### Ancient Lake Creede: Its Volcano-Tectonic Setting, History of Sedimentation, and Relation to Mineralization in the Creede Mining District

*Edited by Philip M. Bethke  
and Richard L. Hay*



## GSA Publications

P.O. Box 9140  
Boulder, CO 80301-9140

Toll-free: 1-888-443-4472

Fax: 303-443-1510

Web: [www.geosociety.org](http://www.geosociety.org)

# Glaciohydraulic Supercooling, Basal Freeze-on, Stratified Basal Ice and “Deformable Till Beds”: Matanuska Glacier, Alaska

**Conveners:** *Edward B. Evenson, Earth and Environmental Sciences, Lehigh University, Bethlehem, PA 18015*  
*Daniel E. Lawson, Cold Regions Research and Engineering Laboratory, Hanover, NH 03755*  
*Grahame J. Larson, Geological Sciences, Michigan State University, East Lansing, MI 48824*  
*Richard B. Alley, Geosciences, Pennsylvania State University, State College, PA 16802*

Geoscientists have long known that the best insights come at outcrops and exposures. The GSA Field Forum is a new approach that combines the traditional observations of a field trip with the targeted scientific discussions of a Penrose or Chapman Conference to advance the understanding of a particular topic across an important segment of the community. Recent debates concerning the nature and importance of deformable beds, ice-bed interactions, and glaciohydraulic supercooling and its role in debris entrainment and transport made a field forum focused on subglacial processes timely, especially with respect to the flow and dynamics of former ice sheets. Altered basal conditions can cause hundredfold or larger changes in ice-flow speed, and paleoclimatic records show that such changes have occurred in the past. Basal conditions also play a critical role in debris entrainment and transport. In particular, debris fluxes associated with Heinrich events and till transport and deposition emphasize the importance of understanding processes occurring at the glacier bed. Many important questions regarding the origin, deformation, and evolution of basal ice and subglacial sediment still remain unanswered and require a multidisciplinary approach by earth scientists with diverse backgrounds. The recent recognition that onset of glaciation can increase erosion rates by 1–2 orders of magnitude has further focused attention on glacier-bed processes because of the clear need to include glaciers in the models of mountain belts and global biogeochemical cycling. Finally, it is only by reviewing field evidence, data, and models of basal processes of modern glaciers that we can hope to understand the erosional, depositional, and landform record of former ice sheets and predict the behavior of modern glaciers and the Greenland and Antarctic ice sheets.

The first GSA Field Forum convened in Alaska, March 18–22, 2000. The logistics of winter field work (temperatures of –40 °F are common this time of the year at the Matanuska Glacier) and severe lodging limitations required restricting participation to 27 people, including the leaders.

Spectacular weather, combined with the excellent winter exposures produced

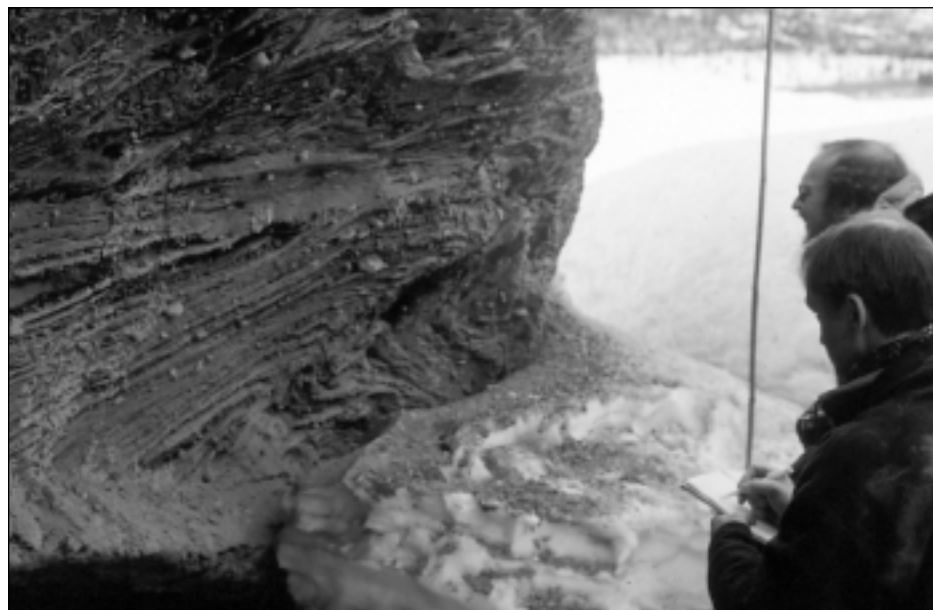
by ice marginal uplift, sublimation, and wind etching, allowed an international group of glacial geologists, geomorphologists, sedimentologists, geophysicists, geochemists and glaciologists to simultaneously examine, discuss, photograph, and sample the basal and subglacial facies of the large, active, and well studied Matanuska Glacier.

Participants traveled to the Matanuska Glacier with six stops along the Matanuska Valley to photograph and discuss the modern Matanuska outwash system and deglacial features of the Knik-Matanuska glacial system. A hike to the glacier margin allowed participants to familiarize themselves with the ice-marginal conditions and plan appropriately for the next three days at the ice margin.

Previous work at the Matanuska Glacier has shown that during the summer melt season, pressurized subglacial waters flowing from overdeepenings supercool and grow ice on the glacier's base, trapping debris (mainly silt) and forming laminated basal-ice sections several meters thick. Ice flow during the winter is not balanced by the slow sublimation, so the ice margin upthrusts to produce superb exposures of both the lam-

inated, basal freeze-on ice and the frozen-on subglacial deforming bed.

In three days of study, participants tested the evidence and implications of glacier growth on the bottom. A demonstration of sampling protocols involving a cement saw produced new samples. Grahame Larson has used these to confirm earlier work showing bomb-produced tritium in basal ice underlying tritium-free older glacier ice, demonstrating the recent origin of the underplated material. Associated samples have been analyzed by participant Thure Cerling for their gas (<sup>3</sup>He) composition, and large anomalies from atmospheric concentrations attest to the complex processes occurring during and after ice accretion. The clear evidence of metamorphic processes in some, but not all, basal ice generated vigorous discussion on the relative importance of accretional processes and postaccretion modification in generating the observed layering. Everyone agreed that we are still confused, but at a much higher level! Staci Ensminger summarized her results showing that debris bands crosscutting the body of the glacier are basal crevasses charged by silt-laden basal waters, and several participants related consistent observations from other glaciers.



Richard Alley and Geoff Boulton examine attenuated folds in basal stratified facies.

**DEPARTMENT HEAD - GEOLOGY AND GEOLOGICAL ENGINEERING**

**The Colorado School of Mines (CSM) solicits applications for the position of Head, Department of Geology and Geological Engineering.**

This position offers the unique opportunity to work in an applied, interdisciplinary environment. Applicants must have a Ph.D. in geology, geological engineering or other geoscience field. Pertinent management, teaching and research skills are desired. A minimum of ten years of a combination of academic and industrial and/or government experience in both basic and applied geoscience and/or geological engineering is required. The successful candidate will work with other department heads on campus to lead development of innovative, multi-disciplinary education and research programs in earth science and engineering.

The Department has a strong tradition in applied undergraduate and graduate education and offers a B.S. (Geological Engineering) degree with subdisciplines of engineering geology and geotechnics, groundwater engineering, environment, petroleum and mineral exploration and M.S. (Geology, Geochemistry), M.E. (Geological Engineering) and Ph.D. (Geology, Geological Engineering, Geochemistry) degrees. Education and research programs emphasize a field, laboratory and theoretical balance in the integration of basic and applied geoscience and engineering. Programs of study include all of the basic geosciences, particularly as applied to energy and mineral deposit geology and exploration, hydrogeology and groundwater engineering, geotechnical engineering, engineering geology and geological aspects of environmental science and engi-

neering. Programs are enhanced through collaboration with other departments including Geophysics, Chemistry and Geochemistry, Petroleum Engineering, Mining Engineering and Environmental Sciences and Engineering.

The Department Head is responsible for management of department affairs for approximately 18 faculty, 3-5 staff, 75 undergraduate students and 118 graduate students. Responsibilities include teaching, direction of graduate research, the advancement of education and research programs, faculty and staff development, resource acquisition and industry liaison. Information about the school and the department can be found at <http://www.mines.edu>, and <http://www.mines.edu/Academic/geology>.

Applicants should send a letter of application, resume, brief statement of immediate professional goals, and names and addresses of three professional references should be sent to:

Colorado School of Mines  
Office of Human Resources  
Search #00-051010  
1500 Illinois Street  
Golden, CO 80401

Review of applications will begin October 1, 2000, and continue until such time as a successful applicant is chosen.

*CSM is an EEO/AA employer. Minorities and females are encouraged to apply.*



The late-winter sun triggered debris flows from basal ice and seasonally frozen-on subglacial till, and observations of the flows illustrated the linkage between basal ice and morainal deposits. Comparison of the nascent deposits to the prominent Little Ice Age moraine and other sediment accumulations clearly showed the geomorphic importance of the active processes.

Talks by the convenors and field trip guide editors Jeff Strasser and Staci Ensminger linked the wintertime observations to summertime processes and to a wealth of other data collected over decades of work on the glacier. The talks also emphasized the physical basis for expecting that supercooling beneath overdeepened glaciers is a widespread process, with implications for glacier erosion, sedimentation, and motion. Talks contributed by Matt Roberts and Jay Fleisher then demonstrated features from Iceland and coastal Alaska quite similar to those of the Matanuska Glacier, while John Anderson showed tantalizing records from the Antarctic continental shelf at least suggesting the possibility of related processes there.

On Thursday, participants were given the morning and snowmobile transportation to visit and sample exposures of basal

ice visited earlier. Many participants took advantage of the spectacular weather and the two available Super Cubs to fly up the Matanuska and into College Fjord in Prince William Sound, and several made ski landings in the Matanuska snowfields. Other participants switched to structural geology and concentrated on the beautifully exposed thrust features of the ice margin.

**Acknowledgments**

We thank Laura Cambiotti (Lehigh University), Tony Carter (Copper Whale

Inn, Anchorage), Jodi Talcott and staff (Majestic Valley Wilderness Lodge), and Bill and Kelly Stevenson (Glacier Park). The Cold Regions Research and Engineering Laboratory cosponsored the forum. The National Science Foundation funded the participation of students and key invited participants. Jeff Strasser and Staci Ensminger wrote the guidebook and provided invaluable logistical and scientific support, and Jay Fleisher provided the photograph included in this report. ■

**Forum Participants**

Richard Alley  
John Anderson  
Greg Baker  
Derek Booth  
Geoff Boulton  
Thure Cerling  
Jim Cotter  
Kurt Cuffey  
Jane Dionne  
Don Easterbrook  
Staci Ensminger  
Ed Evenson  
Jay Fleisher  
Dru Germanoski

John Gosse  
Bernard Hallet  
Ardith Hansel  
Alan Knueble  
Grahame Larson  
Dan Lawson  
Tom Lowell  
Dave Mickelson  
Peter Moore  
Carrie Patterson  
Matthew Roberts  
Jeff Strasser  
Slawek Tulaczyk



PENROSE CONFERENCE SCHEDULED

## Longevity and Dynamics of Rhyolitic Magma Systems

June 7–12, 2001

Mammoth, California

Application due date: January 1, 2001

**Conveners:** **Kurt Knesel**, Department of Earth Sciences, University of Queensland, St. Lucia, Brisbane, Qld 4072, Australia, 61-7-33659779, fax 61-7-33651277, k.knesel@earth.uq.edu.au  
**George Bergantz**, Department of Geological Sciences, Office Box 351310, University of Washington, Seattle, WA 98195-1310, USA, (206) 685-4972, fax 206-543-3836, bergantz@u.washington.edu  
**Jon Davidson**, Department of Earth and Space Sciences, University of California, Los Angeles, CA 90095-1567, (310) 206-3042, fax 310-825-2779, davidson@ess.ucla.edu  
**Web site:** [www.geology.washington.edu/bergantz/penrose-2001.htm](http://www.geology.washington.edu/bergantz/penrose-2001.htm)

Mammoth Mountain forms the southwest rim of the Long Valley caldera, one of three large Quaternary rhyolitic caldera centers in the United States. Long Valley, a site of recent volcanic unrest, lies at the heart of current debate over the mechanisms and time scales for the production, storage, and differentiation of rhyolite magma. Such information is critical to our understanding of fundamental geologic problems such as the formation and growth of Earth's continents and predicting volcanic hazards.

The conference aims to bring together petrologists, geochemists, volcanologists, and geophysicists actively studying the generation and evolution of silicic magmas. We hope to resolve—or at least constrain—a number of very important and currently highly topical issues pertaining to the shallow-crustal evolution of large, typically caldera-forming, silicic magma bodies. Issues include:

- What is a magma chamber—a large, long-lived fractionating liquid body or a “sleepy” crystal mush that gets kicked to life every so often, remobilizing existing material? To what degree do plutons carry forward, in some integrated way, the expression of this?
- What do crystals really represent—phenocrysts vs. xenocrysts—and what “memory” do they retain? Does crystal

growth- and dissolution-zoning reflect protracted fractionation of a single magma body or remobilization and dispersal of crystal mush during injection of fresh magma into the subvolcanic system? How do crystals move in the magma system, or, are the crystals effectively static in a moving magma system?

- What is the efficacy of, and what are the driving forces for, convection and/or mixing in silicic magmas? Can crystal disequilibrium features, such as chemical and/or isotopic zoning and dissolution surfaces, serve to discriminate between thermal convection and magma mixing?
- What are the time scales needed to produce large, rhyolitic magma bodies? Recent work using  $^{40}\text{Ar}/^{39}\text{Ar}$ , Rb/Sr, or U-series isotope data has led to the suggestion that rhyolite magmas in the Long Valley system are stored, following differentiation, for long ( $10^5$ – $10^6$ ) time scales. This contention has been disputed principally on the basis that it would be difficult to keep a body of magma thermally viable for such long periods, even if  $>500\text{ km}^3$  volume. Alternative physical models have been proposed, such as remobilization of juvenile plutons or cumulate materials and ion microprobe work on zircons has variously upheld or contested the claims for long magma residence times. A key focus of the meeting will be to evaluate the different types of data available that bear on ages of magmatic events, and discuss their interpretations.

Keynote talks will outline the current state of knowledge concerning the generation and evolution of large rhyolitic magma systems and will set the foundation for evaluation of existing paradigms, development of new models, and discussion of future research directions. Most of the meeting will focus on poster sessions and group discussions. Mid-meeting field trips to selected Bishop Tuff and Sierran plutonic locations will serve to raise questions concerning limits and constraints on sampling and interpreting geochemical data from pyroclastic deposits based on our knowledge of how large silicic systems erupt, links between plutonic and volcanic environments, and the importance of recharge and mixing in magma evolution.

The conference is limited to approximately 50 participants to ensure a workshop atmosphere focussed on manageable discussions. We encourage participation of graduate students working on silicic magma systems; partial student subsidies will be available. The registration fee, which will include lodging, some meals, field trips, and all other conference costs except personal incidentals, is not expected to exceed \$750. Information on travel to the conference will be provided in the letter of invitation.

Application deadline: *January 1, 2000*. E-mail your application to Kurt Knesel (k.knesel@earth.uq.edu.au). Include a statement of your experience and interests as related to the themes of the conference and a proposed poster presentation title. We encourage you to include a statement of what you perceive to be the most critical questions. ■

### GSA Needs Professional Representatives!

We're looking for applied geoscientists to participate as GSA Professional Representatives. This network of volunteers helps GSA improve its service to professional geoscientists and further diversify its growing membership.

As a Professional Representative, you'll act as an ambassador for GSA, spreading the word among your colleagues about the benefits of GSA membership, such as:

- ❖ national and regional meetings that give professionals a chance to network with others in their fields, meet researchers working on issues of mutual interest, and explore interests outside their specialties;
- ❖ student mentor programs, such as the Roy J. Shlemon Mentor Program in Applied Geology and the John F. Mann Mentor Program in Applied Hydrogeology, for professionals who have knowledge and experience to share; and
- ❖ our employment service, which brings job seekers and employers together year round, and provides interview opportunities and panel discussions at our Annual Meeting.

For more information, or to sign up to be a Professional Representative, contact Joanna Conley at [jconley@geosociety.org](mailto:jconley@geosociety.org), (303) 447-2020, ext. 107, or 1-800-472-1988, ext. 107.

## Geoarchives and the Preservation of Archival Materials

The International Union of History and Philosophy of Science (Division of History of Science) is interested in the preservation of archives relating to 20th (and now 21st) century scientific achievements, which outnumber those of all previous centuries put together. Under the chairmanship of R.W. Home of Melbourne University, its Commission on Bibliography and Documentation is therefore undertaking a world program that aims to make the scientific community aware of the importance of preserving contemporary scientific archives.

With help from the International Commission on the History of Geological Sciences, information about the location of geology-related archives on notable geologists and of geological organizations and institutions worldwide is being collected. Other types of information being collected includes:

- locations of significant geoarchives;
- names and addresses of archivists;
- names and addresses of key organizations involved in Earth Heritage Conservation;
- techniques being used to preserve archival materials;
- details about (or plans for creating) catalogs and books listing geoarchives.

Send information to:

K.S. Murty  
101 Sneh Chaya Apts.  
28 Hindustan Colony  
Amaravati Road  
Nagpur 440 010, India  
91-712-557-984  
fax 91-712-549-521  
ankush99\_99@yahoo.com

## ADS GET RESULTS

CONTACT

*GSA Today* Advertising

P.O. Box 9140, Boulder, CO 80301  
303-447-2020 x153 • 1-888-443-4472  
acrawford@geosociety.org

## THE PALEONTOLOGICAL SOCIETY DISTINGUISHED LECTURER PROGRAM 2000-2003

Every year the Paleontological Society selects outstanding scientists whose works are on a wide variety of paleontological topics for The Paleontological Society Distinguished Lecturer Program. Each Distinguished Lecturer has national and international stature in paleontology, has traveled widely, and has published extensively.



This program is intended to make available lecturers for inclusion in departmental speaker series or other college and university forums.

The Paleontological Society Distinguished Lecturers for the 2000-2003 academic years are included below with their e-mail contacts. Additional information, including titles, is available on The Paleontological Society homepage at <http://www.uic.edu/orgs/paleo/speakerseries.html>. If your department is interested in inviting one or more Distinguished Lecturer to your institution, please contact them directly. Although financial arrangements

must be made directly with each speaker, all Distinguished

Speakers have agreed to be available on an expenses-

only basis. If you have any questions

regarding this program, please feel free to

contact William I. Ausich at [ausich.1@osu.edu](mailto:ausich.1@osu.edu).



Roger J. Cuffey - *Bryozoans and Reefs*

e-mail: [cuffey@ems.psu.edu](mailto:cuffey@ems.psu.edu)

Steven J. Hageman - *Species; Carbonates*

e-mail: [hagemansj@appstate.edu](mailto:hagemansj@appstate.edu)

David M. Harwood - *Plankton; Antarctica*

e-mail: [dharwood@unl.edu](mailto:dharwood@unl.edu)

Steven M. Holland - *Stratigraphy; Stability*

e-mail: [stratum@gly.uga.edu](mailto:stratum@gly.uga.edu)

Brian T. Huber - *Cretaceous Deep-Sea Record*

e-mail: [Huber.Brian@nmnh.si.edu](mailto:Huber.Brian@nmnh.si.edu)

Claudia C. Johnson - *Paleoenvironments*

e-mail: [claudia@indiana.edu](mailto:claudia@indiana.edu)

Bruce S. Lieberman - *Evolution; Cambrian*

e-mail: [blieber@eagle.cc.ukans.edu](mailto:blieber@eagle.cc.ukans.edu)

Charles R. Marshall - *Innovation and Incompleteness*

e-mail: [marshall@eps.harvard.edu](mailto:marshall@eps.harvard.edu)

David L. Meyer - *Crinoids and Edrioasteroids*

e-mail: [david.meyer@uc.edu](mailto:david.meyer@uc.edu)

Lisa E. Park - *Ostracodes and Paleoclimate*

e-mail: [lepark@uakron.edu](mailto:lepark@uakron.edu)

Judith Totman Parrish - *Paleoclimates*

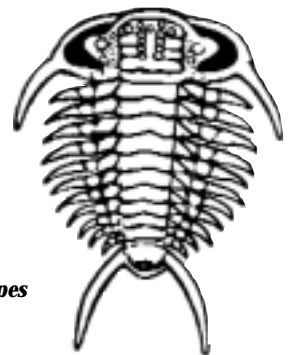
e-mail: [parrish@geo.arizona.edu](mailto:parrish@geo.arizona.edu)

Bruce Runnegar - *Metazoan Origins: Carbonate Isotopes*

e-mail: [runnegar@ucla.edu](mailto:runnegar@ucla.edu)

Charles E. Savrda - *Trace Fossils*

e-mail: [savrdce@mail.auburn.edu](mailto:savrdce@mail.auburn.edu)



# Planned Giving Options Give Donors the Ability to Give Generously Today and in the Future

Julie A. Wetterholt, Director of Development

During the past three years, GSA Foundation was pleased to receive generous bequests from three GSA members. Clyde T. Hardy, Horace R. Blank, and Raymond Woods all held GSA dear to their hearts, and as a result, they had made the important decision to include GSA Foundation in their wills. Regrettably, because they did not notify us, we were never able to extend our appreciation to them.

While many of us do not consider ourselves to be "major benefactors," we can often create significant charitable gifts through planning. Most large gifts need to be planned by you and your advisors to ensure the best results for your financial plan and your estate plan. There are many ways to make a significant gift to GSA Foundation and maximize the impact of your gift. We urge you to let the Foundation know when you have taken this important step so that we can properly acknowledge your generosity during your lifetime. Any planned gift gives you entrance to our planned giving club, the Pardee Coterie, where we show our appreciation for your long-term investment in GSA. Here are just a few of your options and the potential tax benefits to you and your loved ones. (Be sure to consult your tax or financial advisor for information on your individual situation.)

## Planned Giving Options and Benefits

Cash gifts are the simplest and most effective way to give to GSA Foundation. You can receive a full tax deduction for the amount of your cash gift in the year you make your gift, subject to certain tax

limits. The higher your tax bracket, the more potential for tax savings.

Gifts of stocks, bonds, mutual funds, and real estate that have appreciated in value and are owned for more than one year can result in triple tax savings. You may receive an income tax deduction on the market value, not the original price, of the securities or real estate. You bypass any capital gains tax on the gain or growth since the time of purchase. Opportunities for state capital gains tax savings may also be available.

Bequests provide a way for you to remember GSA Foundation in your will and can reduce your inheritance taxes. Your will can designate gifts of cash, securities, or other property, or a percentage of the remainder of your estate. The suggested legal wording is:

For a specific bequest: *I leave [dollar amount] to the Geological Society of America Foundation, Inc., P.O. Box 9140, Boulder, CO 80301, to be used for general purposes.*

For residual bequests: *All the rest, residue, and remainder of my estate, real and personal, I give, devise, and bequeath to the Geological Society of America Foundation, Inc., P.O. Box 9140, Boulder, CO 80301.*

Gifts of life insurance can be made in the form of a new policy or an existing policy. Premiums paid by the donor on a donated life insurance policy qualify for charitable tax deductions. If an existing policy is paid in full, your charitable contribu-

tion is generally the replacement value or the cost basis of the policy.

Gifts of retirement plan assets can be arranged through naming GSA Foundation as a beneficiary of your retirement plan or IRA (Individual Retirement Account). This option is especially effective in minimizing estate taxes. Retirement assets can also be placed in charitable trusts, maximizing your financial and estate planning benefits.

Life income gifts can be made through charitable remainder trusts, charitable lead trusts, charitable gift annuities, and pooled income funds. These arrangements offer substantial tax savings while providing an annual income to you, your family, or others. When appreciated assets or property are placed in these arrangements, the assets are reinvested and diversified and may produce a greater yield for the donor or beneficiaries.

For more information, please contact Julie Wetterholt, Director of Development, GSA Foundation.

## Digging Up the Past

Most memorable early geologic experience

"Between my freshman and sophomore years at Indiana University, I assisted a graduate student in mapping the area around IU's new field station in Montana"

—Raymond J. Pickering



## GSA Foundation

3300 Penrose Place  
P.O. Box 9140  
Boulder, CO 80301-9140  
(303) 447-2020  
drussell@geosociety.org

Enclosed is my contribution in the amount of \$\_\_\_\_\_.

Please credit my contribution to the:

- Unrestricted Fund
- Other: \_\_\_\_\_ Fund
- I have named GSA Foundation in my will.

PLEASE PRINT

Name \_\_\_\_\_

Address \_\_\_\_\_

City/State/ZIP \_\_\_\_\_

Phone \_\_\_\_\_





## Donors to the Foundation, May 2000

Claude C. Albritton Memorial  
Jane Christman Albritton

Biggs Excellence in Earth Science  
Education

Curtis G. Lindsay *in memory of*  
*Professor John Lemish*

Shirley Dreiss Memorial  
Stephen J. Urbanik

Farouk El-Baz Fund  
Diane M. Cozzi  
Patricia C. Grodzki

Arthur D. Howard Fund  
Kurt Servos\*

Richard H. Jahns Distinguished  
Lecturer  
Charles W. Welby\*

J. Hoover Mackin Award  
Bruce H. Bryant\*

John T. & Carol G. McGill Fund  
Christopher F. Erskine

Minority Fund  
A. Wesley Ward

North-Central Section Endowment  
Sharon Geil♦

Publications  
Jon Olsen\*\*

Research Grants  
Mehdi Alavi\*

Shoemaker Memorial for Crater  
Studies  
Robert A. Cadigan

Southeastern Section Endowment  
A. David Kendrick  
Robert C. Whisonant♦

Unrestricted  
Ewart M. Baldwin  
Matthias Bernet  
Darinka Zigic Briggs  
A. Ewan Campbell  
Lawrence R. Cann  
Keros Cartwright\*  
William L. Chenoweth  
James B. Coffman\*\*

Jack O. Colle  
Ann Marie Cox  
Robert F. Diffendal Jr.  
Henry James Dorman  
Avery Ala Drake Jr., *in memory*  
*of Hal James and George Viele*

Hugh White Dresser  
W.G. Ernst  
Helen L. Foster  
Gerald M. Friedman\*  
Sharon Geil♦  
Richard Goldsmith\*  
Richard Hamburger  
Gilmor S. Hamill IV\* *in memory*  
*of Augustin Pyre*

George Fulford Hanson  
Thomas L. Holzer\*  
Nobuhiro Imoto  
Ralph O. Kehle

A. David Kendrick♦  
Bart J. Kowallis  
Konrad B. Krauskopf\*\*  
Chia-Yu Lu

Reese E. Mallette♦  
Candace S. Martinez  
Peter H. Masson\*

Margaret W. Matlin *in honor of my*  
*father, Donald Edward White, for*  
*his 86th birthday*

Marlene L. McCauley♦  
Judson Mead\*  
Paulus Moore\*\*

Michael J. Murphy  
Grover E. Murray *in memory of Samuel*  
*Ellison Jr. and Roger T. Saucier*

Virginia S. Neuschel  
Jack E. Oliver\*\*

Elmer D. Patterson  
Ralph B. Peck\*\*  
William L. Petrie\*  
Michael S. Petronis  
Claire A. Richardson  
Jack C. Rosenau  
Paul K. Sims

Timothy M. Smith  
Holly J. Stein  
Richard C. Stenstrom  
Mary Wilder Stoertz  
Donald A. Swanson  
Joshua I. Tracey Jr.\*



Earth Science Ventures

[www.nzrocks.com](http://www.nzrocks.com)

Guided field trips on an  
**active** plate boundary

Educational adventure in  
association with **Victoria**  
**University, Wellington.**

ACTIVE TECTONICS field camps.

ACTIVE VOLCANISM field trips.

ANTARCTIC RESEARCH ASSISTANTS

MARINE RESEARCH CRUISES

DIRECTED BY

BRAD ILG PhD, NZ and US geologist  
LES SINGH NZ geologist

Sherwood D. Tuttle\*

Jane H. Wallace\*\*

A.L. Washburn\*

Karl W. Wegmann

Malcolm P. Weiss\*\*

John H. Weitz\*

John A. Willott

David F. Work\*♦

John L. Wray

Paul W. Zimmer

\*Century Plus Roster  
(gifts of \$150-\$249).

\*\*Penrose Circle  
(gifts of \$250 or more).

♦Second Century Fund.

## GSA Member Service Center

*One-stop shopping for all your GSA needs!*

E-mail: [member@geosociety.org](mailto:member@geosociety.org)

◆ Buy a GSA publication

◆ Register for a GSA meeting

◆ Update your mailing address

◆ Get the information you need

Phone: (303) 447-2020, ext. 774 • Fax: 303-443-1510

Toll-free: 1-888-443-4472 • Web: [www.geosociety.org](http://www.geosociety.org)

# Rock Stars

## The Father of Modern Volcanology: Howel Williams (1898–1980)

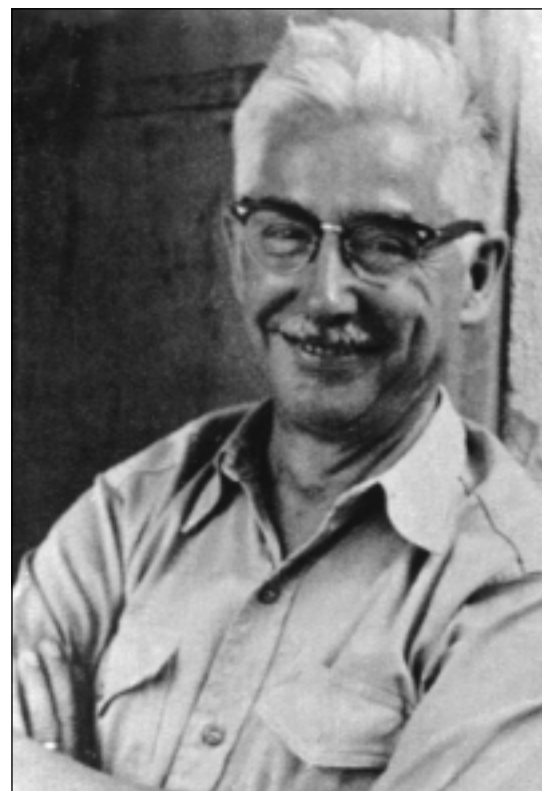
*Alexander R. McBirney, Department of Geological Sciences, University of Oregon,  
Eugene, OR 97403-1272*

Though known to most of his friends as “Willie,” the title Howel Williams cherished most was one given to him by his students on the occasion of his retirement: *The Last of the Ordovices*. I think it appealed to him because it reflected his Welsh background and his role as one of the last members of a passing era.

Williams’ 50-year career spanned a period of dramatic changes in the sciences, especially geology. Through his own contributions and those of his students, he was largely responsible for the emergence of volcanology as a rigorous branch of modern science. Although his work was in a classic style that we seem to have lost, perhaps forever, few have left so pervasive an imprint on their fields. Even fewer have inspired wider admiration or deeper affection.

Born in Liverpool, England, Williams was raised along with his identical twin, David, and six other children in a modest, middle-class household. He spoke only Welsh until the age of six. His scholastic honors in secondary school won him a scholarship to the University of Liverpool where, despite an interruption for military service from 1917 until the armistice in 1918, he received his bachelor’s degree with first-class honors before the age of 20. Though his initial studies were in geography, Williams soon developed a keen interest in archaeology, which in turn, by a singular chain of events, led him to geology.

While engaged in excavations of a Roman camp site in northern Wales, Williams observed that the floor of the baths was paved with slabs of slate rich in curious fossils. Anxious to learn where the Romans had quarried the slate, he consulted P.G.H. Boswell of Liverpool’s Department of Geology. It so happened that Boswell was then studying the Silurian rocks of Denbighshire and, from the nature of the distinctive graptolites in the slate, immediately knew its source. Williams was so impressed with this instant solution to his problem that he began to sit in on lectures in geology and in 1924, after receiving his M.A. degree in geography, went on to earn an M.S. in geology.



Howel Williams, 1961.

With his geology degree came another scholarship that enabled Williams to further his studies at Imperial College. There, working chiefly under W.W. Watts, he completed a detailed study of Snowdon in North

Wales. The abundant Ordovician volcanic rocks he encountered there and in the area near Capel Curig aroused his interest in volcanism and led him to the classic volcanic fields of the Eifel district of Germany and the Auvergne in central France. He returned with a firm resolve to make volcanic geology his principal work. Thanks to a fellowship from the Commonwealth Fund, Williams was able to devote the next two years to studies with A.C. Lawson at the University of California at Berkeley. Apart from a single seminar dealing with the geology of California, he took no formal courses while at Berkeley, devoting his time instead to field studies. He concentrated on the ancient volcanoes of the Sutter Buttes in the Sacramento Valley of California and on Lassen Peak, a recently active volcano in the southern part of the Cascade Range. In addition to all this, he found time to visit Hawaii and Tahiti.

In 1928, Williams returned to Britain to take his D.Sc. in geology at the University of Liverpool. He then spent two years on the staff of Imperial College before returning to America to join the faculty at Berkeley in 1930. There, he rose to the rank of full professor in only seven years. Between 1945 and 1949, he served as chairman of the Department of Geology, doing much to raise the quality of its faculty, teaching, and research. It was largely his influence during these critical years that set the course of the department and brought it into the ranks of leading American institutions. He was elected to the National Academy of Sciences in 1950.

Williams continued his studies of volcanoes in the western United States, particularly Crater Lake, where his work formed the basis for two of his most important contributions, a monograph on Crater Lake and a general treatise on the origins of calderas. The rapid succession of papers that he produced during this period included

Howel Williams, left, and Alexander McBirney use the hood of a jeep as a place to plot the geology on their map of Honduras.

several that soon became classics of volcanology. He dealt with volcanic domes, the classification of pyroclastic rocks, the Pliocene volcanic centers of the Navajo-Hopi region, and several large volcanic centers of the Cascade Range, including Newberry Caldera and The Three Sisters.

In 1943, when the volcano Paricutin was born in a Mexican cornfield, Williams joined a group of geologists recording its growth and evolution and completed a reconnaissance study of more than a hundred similar cinder cones in the surrounding region. This was the beginning of the work in Latin America that absorbed much of his energy for the remaining years of his career. He found there several opportunities to apply his geological experience to problems in archaeology. While in Mexico he used petrographic techniques to discover the source of stone used in the giant Olmec sculptures of La Venta near the Gulf of Mexico. In 1950, with the support of the Carnegie Institution of Washington, Williams went to Nicaragua to examine the extraordinary ancient human footprints in a hardened volcanic mud-flow near Managua.

I was living in Nicaragua at that time. I had started a coffee farm in a remote part of the country and, while waiting for the trees to mature, took a job with a mining company. Though totally ignorant of geology, I was given the task of exploring an area near the volcanic chain to develop geothermal power for the mine. My boss asked Williams to let me accompany him in the field for a week or so in order that I might learn some rudimentary geology. During the day, we explored the geology of the area, and in the evenings Williams tutored me in volcanology and elementary petrology. His enthusiasm and lucid explanations aroused my interest and ultimately led me to study under him at Berkeley. After I obtained my degree, we worked together until his death in 1980. I was not the only student to be captivated by his enthusiasm for volcanology. In the course of his long career, Williams fostered a succession of students, many of whom went on to become leaders in their fields.

Williams' work in Nicaragua was the beginning of a succession of regional studies which, though less widely known than his work on calderas and domes, were even more remarkable, both for their scope and for the extent of their contribution to the previously little-known geology of Central America. These studies, together with a survey of the Galapagos Archipelago completed in 1969, covered large regions where few, if any, geologists had gone before. The studies allowed us to start from scratch, working out broad structures, regional stratigraphy, and the evolution of an entire volcanic province. Less interested in the eruptive phenomena of active volcanism than in broad structural and lithologic relations, Williams had a masterful ability to decipher the form and past activity of large volcanic complexes.

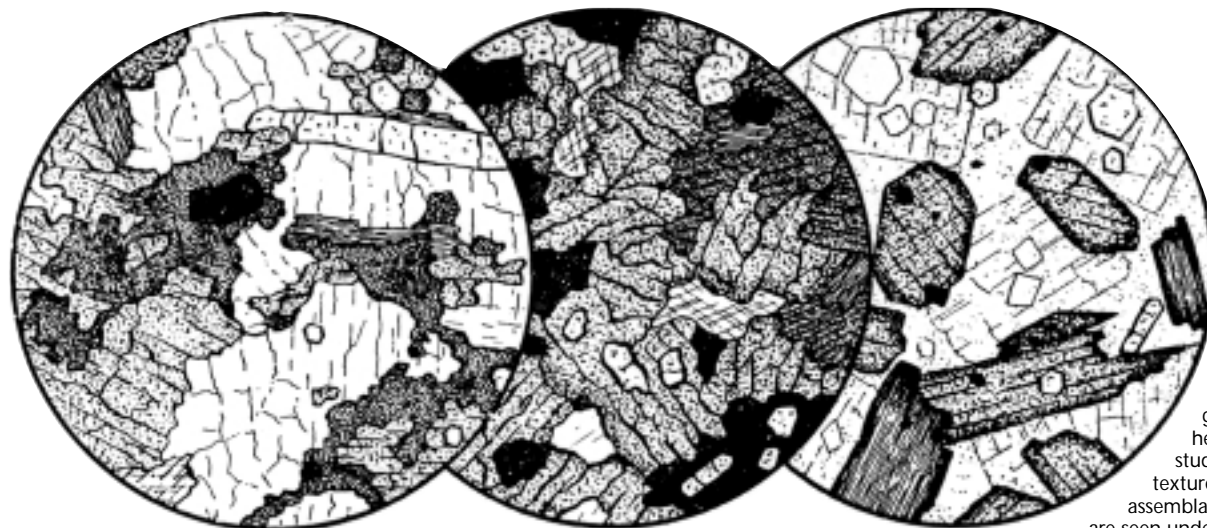
Many have commented on his instinctual ability to find the critical outcrop that resolved a puzzling question. With his uncanny eye for landforms and the regional significance of lithologic variations, he could synthesize the volcanic history of a broad region from a few seasons of field reconnaissance and petrographic analyses.

In addition to regional field studies, Williams produced a widely used textbook on petrography in 1954, and, in 1979, a comprehensive treatise on volcanology. The former was the result of collaboration with Frank Turner and Charles Gilbert at the University of California; the latter a product of the years he spent with me at the University of Oregon after his retirement from Berkeley. Published only two months before his death, *Volcanology* summed up a lifetime's experience and, despite more recent advances, is still regarded as one of the most comprehensive works on the subject.

Williams' most conspicuous personal trait was his sparkling wit and unflinching sense of humor. Until one became acquainted with him, his jokes could be disconcerting. Encountering one of his students crossing the campus he might ask, "Why are you wandering about at this hour wasting valuable time? You should be in your office working!" Or, upon entering a laboratory, he would pretend to check the settings of the instruments and offer a "correction factor" in the form of a complex differential equation incorporating the effects of daily weather conditions on analytical results. But beneath his jovial manner there was a personal reserve that only those who knew him well could fully appreciate. His irreverent wit concealed an uncompromising code of personal conduct.

A natural scientist in the classical tradition, Williams stressed meticulous observations, thorough research, and sound interpretations presented in elegant, lucid prose. With his ability to read geological literature in English, French, German, or Spanish, he could trace the historical development of ideas and synthesize diverse views with simplicity and clarity. The same qualities pervaded his teaching. His courses in petrography and regional geology were enlivened with amusing historical anecdotes and illustrated by artistic hand-drawn diagrams that left an indelible impression on hundreds of students.

In the closing years of his life, Williams saw the classical methods of scholarship give way to complex geochemical investigations and thermodynamic calculations compiled on computers and reported in hastily prepared, multiauthored papers of transient interest. Although he himself contributed to this change and on balance approved of it, he inspired in his students a respect for the traditional standards that make his work stand out, even today, as enduring contributions to volcanology. ■



Howell Williams' hand-drawn illustrations of petrographic thin sections helped thousands of students understand the textures and mineral assemblages of rocks as they are seen under the microscope.



Mojzsis and Harrison ("Vestiges of a Beginning: Clues to the Emergent Biosphere Recorded in the Oldest Known Sedimentary Rocks," *GSA Today*, v. 10, no. 4) stated that methane in experiments from Horita and Berndt (1999) may have been derived "exclusively from bio-organic contaminants in the reactant olivine" and cited McCollom and Seewald (1999) to support this view. While Mojzsis and Harrison's interpretation of isotopically light carbon in Archean metasediments could well be correct, we object strongly to the notion of biologic contamination in our experiments. In particular, methane production was monitored before any  $\text{NaHCO}_3$  was injected into our experiments, and no significant contamination was observed. Conversion of dissolved  $\text{CO}_2$  to  $\text{CH}_4$  commenced immediately after the  $\text{NaHCO}_3$  was injected and occurred on a scale that would overwhelm any potential contamination from other carbon sources. Furthermore, McCollom and Seewald (1999) reported preliminary results and interpretations from an isotope tracer experiment that was performed to help quantify sources of methane produced during hydrothermal alteration of olivine. Horita and Berndt's experiments did not involve the reactant olivine so the two studies are unrelated. Therefore, Mojzsis and Harrison's reference to our study is unfounded.

#### References Cited

Horita, J., and Berndt, M.E., 1999, Abiogenic methane formation and isotopic fractionation under hydrothermal conditions: *Science*, v. 285, p. 1055-1057.

McCollom, T.M., and Seewald, J.S., 1999, Rapid equilibration of  $\text{CO}_2$  and formate under hydrothermal conditions (with a comment on the abiotic synthesis of hydrocarbons during serpentinization): *Geological Society of America Abstracts with Programs*, v. 31, no. 7, p. A-431.

Michael E. Berndt  
University of Minnesota  
Minneapolis, MN 55455

*Mojzsis and Harrison reply:* Berndt et al. (1996) reported the reduction of  $\text{CO}_2$  to methane and higher hydrocarbons formed under reducing conditions according to the reaction: olivine = serpentine + magnetite +  $\text{H}_2$ . In attempting to reproduce the results of Berndt et al. (1996), McCollom and Seewald (1999) stated that, "isotopic labeling and blank experiments indicate that the most likely source of the observed hydrocarbons is decomposition of trace contaminants rather than abiotic synthesis." We acknowledge that McCollom and Seewald (1999) in fact were claiming that the results of Berndt et al. (1996), and not Horita and Berndt (1999), are due to bio-organic contamination of the reactant olivine.


#### References Cited

Berndt, M.E., Allen, D.E., and Seyfried, W.E. Jr., 1996, Reduction of  $\text{CO}_2$  during serpentinization of olivine at 300 °C and 500 bar: *Geology*, v. 24, p. 351-354.

Horita, J., and Berndt, M.E., 1999, Abiogenic methane formation and isotopic fractionation under hydrothermal conditions: *Science*, v. 285, p. 1055-1057.

McCollom, T.M., and Seewald, J.S., 1999, Rapid equilibration of  $\text{CO}_2$  and formate under hydrothermal conditions (with a comment on the abiotic synthesis of hydrocarbons during serpentinization): *Geological Society of America Abstracts with Programs*, v. 31, no. 7, p. A-431.


Stephen J. Mojzsis, T. Mark Harrison  
University of California, Los Angeles  
Los Angeles, CA 90095-1567



# AEG-GRA

## JOINT MEETING 2000

### SAN JOSE, CA SEPTEMBER 19-26



### Some Symposia

- Landslide Mitigation: A World View
- Resource Management and Watershed Restoration
- Forensic Engineering Geology
- Environmental Forensics/ Forensic Geochemistry
- Innovative Environmental Technologies
- Conjunctive Use - Groundwater Banking
- California's Seismic Hazards Mapping Act

### &

### Field Trips

- Northern San Andreas Fault System
- Yosemite Valley Rockslides
- Santa Clara Valley Water Supply Dams
- San Francisco Bay Crossings
- Landslide and Coastal Erosion Processes in San Mateo County
- Engineering Geology West Side
- San Joaquin Valley

## www.aegweb.org

## 979-845-0142

## New GSA Fellows

Elected by action of Council, May 2000

E. Arthur Bettis III  
John C. Butler  
Carl N. Drummond  
Richard G. Fairbanks

Sara S. Foland  
Charles T. Foster Jr.  
Craig R. Glenn  
Paul Goldberg

Susanne U. Janecke  
Joseph T. Kelley  
Lawrence A. Lawver  
Lance D. Miller

Robert S. Nelson  
Gary A. Smith  
David R. Soller

## New GSA Members

The following members were elected by Council action during the period from October 1999 through February 2000. (Those who transferred from Associate status appear in boldface type.)

Pedro A.A. Abreu  
Seth D. Ackerman  
Richard G. Adair  
Tim J. Agnello  
David G. Agresti  
Shawkat Ahmed  
Laurent Ailleres  
Abdulaziz A. Alduaiji  
Khalid D. Aldulaimi  
Michael C. Alfieri  
Muna Al-Samit  
Patricia A. Aluskewicz  
Melissa A. Amentt  
Alison M. Anders  
Michael T. Applegarth  
Yuji Arai  
Will J. Arcand  
Christopher S. Armistead  
Kim F. Ashley  
Wade L. Aubin  
Seth D. Axkerman  
Robert Ayuso  
Mohammad A. Baaheth  
Jennifer S. Bachman  
Christopher T. Baldwin  
Bridget A. Ball  
Abdullah Bamousa  
Fred F. Barber  
Gary G. Bard  
Bill Barker  
Charles F. Barker  
Peter E. Barkmann  
Jason B. Barnes  
Warren Barrash  
John M. Bartos Jr.  
Tomasz K. Baumiller  
Jason B. Baxter  
George J. Bayer  
Blakely R. Bear  
Bennett L. Bearden  
Darren L. Beckstrand  
Anthony J. Bednar  
Peter C. Beeson  
John G. Begg  
Mikala S. Beig  
Anthony L. Benson  
Kirsten E. Benson  
David W. Berry  
Shawn P. Beskar  
Robert A. Bevilacqua  
Karen M. Bezusko  
Janok P. Bhattacharya

Richard A. Bieber  
R. Jason Biga  
Wendy Bigler  
Jason D. Blair  
William J. Blanford  
Shawn D. Blocker  
Charles L. Blount  
Kevin G. Boggs  
Janice L. Boller  
Phillip R. Bonneau  
Leslie A. Boockoff  
Lawrence H. Boram  
Josh W. Borella  
Thomas J. Borra  
Rachelle M. Boskie  
Benjamin C. Bostick  
Sarah E. Bowser  
Christine F. Braban  
Raymond Brady  
Terry T. Brawner  
Jill M. Bries  
Jason P. Briner  
Amy L. Brock  
Simon H. Brocklehurst  
James W. Brode  
Michael E. Brookfield  
Mark J. Brooks  
Bruce E. Broster  
Carolyn H. Brown  
Christina M. Brown  
Scott R. Brown  
Ian D. Browne  
Andrew L. Brownstone  
Anna Carol Bryant  
Gerald C. Bryant  
Robert Buchwaldt  
Rosalice Haberman Buehrer  
Stefan Burde  
Elane Burger  
David K. Burton  
Mark J. Burwell  
Peter A. Buscemi  
Andrew B.G. Bush  
Darryl J. Butkos  
Sonya A. Cadle  
R. Scott Calhoun  
Hilario Camacho-Fernandez  
Guillermo A. Camargo  
Carl E. Campbell  
Terrance P. Campbell  
Luigi Carmignani  
Stephanie M. Carney

Patrick M. Carr  
Charles W. Carrigan  
Chris J. Carroll  
Monica Carroll  
Christopher J. Carson  
Christian Rene Carvajal  
Isla S. Castaneda  
Peter J. Castiglia  
Daniel W. Casto  
Maria C. Castro  
Aaron J. Cavosie  
Timothy C. Chao  
Dawn M. Chapel  
William J. Chazey III  
Daniel P. Childers  
Ryan D. Christensen  
Eric H. Christiansen  
Nathan I. Chutas  
Gabriel Cisneros  
Henry P. Clauson  
Claudine Cohen  
Lorrie V. Coiner  
Joseph P. Colgan  
Jeremiah Collier  
Deanna M. Combs  
Christopher E. Connell  
David L. Cook  
Mary J. Cooke  
Chad D. Cooper  
Tammi L. Corchero  
Jeremy J. Coughlin  
Brendan T. Cox  
Julia E. Cox  
Samuel J. Coyner  
Nancy M. Craft  
Timothy E. Craske  
Walter L. Cressler III  
Allison L. Croley  
Benjamin T. Crosby  
Carl C. Crouch  
Michella C. Crown  
Xiaojun Cui  
Shane D. Cummings  
Heather S. Cunningham  
Alexis T. Cupo  
Jason W. Currie  
Kirsten B. Cutler  
Paul M. Cutler  
Huntly N. Cutten  
Steve J. Czehura  
Dana M. D'Amato  
David J. Dariano

Dawn Gordon Davis  
Jana L. Davis  
Tammy K. Davis  
Sharon K. Day  
Jacob J. De Moor  
Krysten M. DeBroka  
John deLaChapelle  
Brian A. Dempsey  
Jack M. Denman  
Devin P. Dennie  
Jill N. Densmore  
Edward Derbyshire  
Ann Marie Diana  
Robert F. Dias  
Thomas G. Diener  
Brad E. Dinege  
Phillip A. Dinterman  
Ginger S. Dodson  
Jan M. Dodson  
Rachel A. Dolbier  
Weiquan Dong  
Jeffrey P. Donnelly  
Shawn M. Donovan  
Gary G. Dorch  
Cathryn M. Dowd  
Besim Dragovic  
Hilary A. Dria  
John A. Dunbar  
Gita Dunhill  
David L. Dunn  
Regan E. Dunn  
Jacob F. Dunston  
Sara H. Durall  
Fritz Ehlers  
Freddi Jo Eisenberg  
Chris L. Eisinger  
Douglas D. Ekart  
Nicole A. Elko  
Carrie M. Elliott  
Michelle L. Ennen  
David Escamillo  
Emily E. Evans  
Christine E. Ewell  
Adrian I. Ezeagu  
Brian A. Fagnan  
Robert A. Fair  
Claudia C. Faunt  
Mark H. Ferguson  
Dan Ferdinand D. Fernandez  
George A. Filpovich

New Members  
*continued on p. 30*

New GSA Members  
*continued from p. 29*

Ismor Fischer  
Marc E. Flanagan  
Sascha Floegel  
Lee J. Florea  
Patrick S. Florence  
Jurgen Foeken  
Geoffrey K. Force  
Kathryn Ford  
Mike J. Formolo  
Donald J. Foss  
Andrea L. Foster  
Brent D. Foster  
Otina C. Fox  
Thomas J. Franko  
Vicky L. Freedman  
Jason French  
Carl R. Froede Jr.  
Qi Fu  
James W. Funderburk  
Jordan E. Furnans  
Kristin E. Gager  
Vanessa G. Gale  
Amitava Gangopadhyay  
Antonio F. Garcia  
W. Brent Garry  
Phillip D. Garwood  
Billie-Jo L. Gauley  
Scott A. Geary  
Anne M. Gellatly  
Pamela A. Gemery  
Kenneth J. Gendron  
Tim R. Gere  
Norman J. Gern  
Susan B. Ginsberg  
Edward C. Girard  
Lesley S. Glass  
Lisa A. Glonek  
Raymond J. Goldie  
Michelle F. Goman  
Luis Antonio Flores de Dios  
Gonzalez  
Ann M. Gooden  
Raymond M. Gorka  
Richard R. Gottschalk  
Nancy C. Grainger  
Helene M. Grall-Johnson  
Sara E. Gran  
Karen L. Greengrass  
James P. Greenwood  
Phyllis E. Gregoire  
Yvonne K. Griffin  
Elizabeth A. Grischkowsky  
Peggy M.K. Gross  
Heidi A. Guetschow  
Cathy Jean Guffey  
Sandor Gulyas  
Jeff E. Gutsell  
Erich D. Guy  
Charles G. Haag  
Omid Haeri-Ardakani  
William R. Halliday  
Matthew J. Hammer  
David J. Hammond  
Lijie Han  
Paul C. Hancock  
Jacqueline J. Hand  
Jordon D. Hand

Laurie A. Hankins  
Jon Harbor  
Carol P. Harden  
Allen L. Hardy  
Robert N. Hargett  
Rick H. Harvey  
Thomas A. Hauge  
Shawn D. Haven  
Eric J. Hawkins  
Wenwu He  
Joseph P. Hebert  
James A. Heller  
Dennis R. Helsel  
Richard K. Herd  
Martha C. Herzog  
Scott D. Heule  
Jason F. Hicks  
Melissa K. Hicks  
Franz K. Hiebert  
David Hilburg  
Michael R. Hilton  
David A. Hindle  
Martin Hoffmann  
Heidi L. Hoffower  
Albrecht W. Hofmann  
Christopher S. Holm  
Michael Holz  
Kevin D. Hon  
Ted W. Hopkins  
Christine A. Horch  
Charles E. Houser  
Chuck D. Howell  
Kenneth E. Howell  
Xiumian Hu  
Noah D. Hughes  
Debbie N. Huntzinger  
Joel A. Hurowitz  
Olafur Ingolfsson  
Scott E. Ishman  
John A. Izbicki  
Jacq Marie Jack  
Mahipalsinh R. Jadeja  
Windy L. Jaeger  
William H. Jahn  
Bruce M. Jakosky  
Robyn E. Jamieson  
Aleksandra G. Janik  
Gi-Young Jeong  
W. Wynn John  
Amy M. Johnson  
Edward Johnson  
Hal E. Johnson III  
Jean M. Johnson  
Marie C. Johnson  
Molly M. Johnson  
Natasha M. Johnson  
Ashanti Johnson-Pyrtle  
Kim Jolitz  
Mary H. Jolly  
Daniel L. Jones  
Matthew L. Jones  
Thomas E. Jones  
Thomas A. Jones  
J. Matthew Justice  
Karyn Lyn Kasprzak  
Randy L. Kath  
Martha H. Kauffman  
Shin-ichi Kawakami  
Baxter F. Kean  
Jonathan P. Keizer

Charlotte E. Kelchner  
Jeffery D. Kelley  
Russell R. Kelly  
Sarah E. Kelly  
Stephan Kempe  
Rebecca Kempthorne  
James A. Kessler  
Cynthia L. Kester  
Todd A. Keyser  
Eugene Khain  
Steven B. Kidder  
Daniel E. Kile  
Marvin B. Killgore  
Eric L. King  
Jack T. King  
Maria Elena King  
Chad A. Kinney  
Shiloh L. Kirkland  
David J. Kistner  
Irene J. Klaver  
Brian N. Klawiter  
Amber L. Kleeschulte  
Johan Kleman  
Yvonne M. Kline  
Brian D. Knight  
Raymond L. Knox  
Rich D. Koehler III  
Alan E. Koenig  
Peter O. Koons  
Frank W. Koot  
Brian E. Kortz  
Paula J. Kosunen  
Karen A. Koutrakos  
Natasha M. Kramer  
Richard A. Krause  
Rita K. Krebs  
Donathon J. Krier  
Jill C. Krukoski  
Piotr Krzyszton  
Monte L. Kuhn  
Thomas K. Kuhn  
Gene A. Kurz  
Tammy Kutzmark  
Dennis G. Kyhos  
Nicholas F. Labedzki  
David M. Lamb  
Ryan P. Lanclos  
Darrell I. Leap  
Ernest B. Ledger  
Gwang Hoon Lee  
Meng-Yang Lee  
Frank Lehmkuhl  
Melissa E. Lenczewski  
Joy Lester  
Jiang hai Li  
John S. Lien  
Colleen E. Lillie  
Fara Lindsay  
C. Blair Linford  
Vanesa D. Litvak  
Darren R. Lockhart  
Steven P. Loheide  
Alberto M. Lopez  
Elsa R. Lopez  
Gloria I. Lopez  
Mark L. Lord  
Maria A. Lorente  
Barbara L. Lorenzo-Rigney  
Guillaume P. Lorilleux  
Vivian S. Lovern

Emily W. Lowe  
Silong Lu  
Richard R. Luckey  
William M. Lukens  
Meghan Lunney  
Donald L. Macalady  
R. Patrick MacDaniel  
Campos E. Madrigal  
Mariah L. Mailman  
Aaron J. Mango  
Len C. Mankowski  
Andrew H. Manning  
Nasser M. Mansoor  
Jeffrey D. Manuszak  
Marci M. Marot  
Todd L. Marsh  
Deborah A. Martin  
John M. Martin  
Mark W. Martin  
Kyle Martinez  
Bettina Martinez-Hackert  
Brigitte A. Martini  
Walter W. Matyskiela  
Jennifer E.P. Matzel  
George F. Maxey  
Paul S. Mayer  
Kevin K. McAleer  
Jeremy P. McCartha  
Bob S. McClellan  
Richard Blaine McClesky  
Craig R. McClung  
Thomas M. McCollom  
James A. McCombs  
Richard T. McCrea  
Bret A. McDaniel  
Heidi L. McDonald  
Trent A. McDowell  
Sean P. McGinnis  
Amber N. McIntosh  
Mark S. McKillop  
Christopher T. McLain  
Brian J.O.L. McPherson  
Nadine McQuarrie  
TJ Meehan  
Jesse J. Melick  
Maura A. Metheny  
Debbie W. Michael  
Rachel E. Miller  
Andrew M. Miner  
Joseph M. Minervini  
Thomas E. Miskelly Jr.  
Molly L. Mistretta  
Carl Mitchan  
Ricardo J. Molinero  
Fred J. Molz III  
John A. Moody  
Bret S. Moore  
Bruce R. Moore  
E. Anthony Morales  
Maria T. Moreno  
Carrie Morrill  
William R. Morris  
Nilendu S. Mukherjee  
Roland Mundil  
Mandy J. Munro-Stasiuk  
Brendan Murphy  
Asif Muzaffar  
Russell E. Myers  
Elisabeth S. Nadin  
Pradeep K. Naik

Thet Naing  
Barbara A. Nall  
Erica M. Napoleoni  
Keshaw Narine  
Daniel L. Narsavage  
Michael Tyler Naus  
Luis Fernando Navarro  
Ron L. Nellerhoe  
Robert W. Nierste  
John R. Nimmo  
David A. Nonnast  
Andrew T. Norton  
Rain G. Nourne  
James H. Nyenhuis  
Grady M. O'Brien  
Joy D. O'Donnell  
Churchill O. Okonkwo  
Paul M. Olesen  
Brooke E. Olson  
William R. Oppermann  
Kevin D. Orabone  
Patrick J. Orr  
S.E. Orrell  
Peter Orvos  
Aleeza H. Oshry  
Gordon R. Osinski  
Michael E. Oskin  
Amy L. Ott  
Penelope M. Padmore  
Betty E. Paepke  
Mia A. Painter  
Scott L. Painter  
Eungyu Park  
Sheila N. Patek  
Jason R. Patton  
Jeremy A. Pavlish  
Randall L. Paylor

Dean A. Pearson  
Donghong Pei  
Alfred H. Pekarek  
Jon Damien Pelletier  
Elizabeth A. Pendleton  
Marta Perez-Arlucea  
Matthew S. Pesci  
Richard A. Peters  
Steven M. Peterson  
Gary T. Petro  
Karin Peyer  
John C. Pfeiffer  
Christine M. Philips  
Warren P. Phillips  
Thandar Phyu  
Jennifer L. Pierce  
Tatana K. Pinegina  
Sergei Pisarevsky  
Joy Pochatila  
Christopher Poitras  
Leonid Polyak  
Robert J. Poreda  
David F. Porinchu  
Jacob L. Porter  
Olivia A. Posner  
Victoria A. Pretti  
Belinda K. Price  
Brian M. Priest  
Michael C. Puchalski  
Tamalyn Pulsipher  
Laura C. Quinn  
Phillip D. Rabinowitz  
Cynthia M. Rachol  
John Ragsdale  
Jeffrey M. Rahl  
Emilia M. Ramirez  
Stephen G. Redak

Oren C. Reedy  
D. Matthew Reeves  
Stephan M. Regenfuss  
Sonya M. Remington  
Andrew J. Rich  
Timothy I. Richards  
Russell V. Richmond  
Alan C. Riggs  
Vincent R. Rinterknecht  
David C. Rivers  
John R. Robertson  
Joseph D. Robertson  
Kenneth R. Robitaille  
Nikolai N. Romanovsky  
Cameron S. Rombach  
Heath C. Roscoe  
Jodi E. Rosoff-Berkowitz  
Kirk C. Ross  
Joel W. Rotert  
Cara L. Roush  
Alakendra N. Roychoudhury  
Richard W. Ruhanen Jr.  
Sandy Rushworth  
Sandra E. Ryan  
Sarah J. Ryker  
Nicholas J. Salkowski  
Carma A. San Juan  
Aaron L. Sanford  
Thomas Saucedo  
Heather M. Savage  
Sherry L. Schaaf  
Ricky A. Schaeffer  
Jennifer J. Schellpeper  
John V. Scherer  
Stephanie A. Schlosser  
Kevin M. Schmidt  
Chris L. Schneider

E Joseph Schultheis  
Kristin A. Schultheis  
Angela M. Schultz  
David Schultz  
Dirk Schulze-Makuch  
Stephanie J. Schwabe  
Janet B. Schwarz  
Judith G. Scotchmoon  
Rebecca L. Scott  
Russell W. Scranton  
Jeffrey S. Seewald  
Amy J. Selting  
Matthew A. Senese  
Yongkoo Seol  
Beverly L. Shade  
Sheila A. Sharp  
Robert J. Shedlock  
Anne F. Sheehan  
Stephanie L. Shepherd  
Bruce A. Sherman  
Jerry Shi  
Mingjuan Shi  
Donna J. Shillington  
David J. Shoore  
Therese Shryane  
Emily Silverman  
Craig Trevor Simmons  
Jeffrey M. Simonsen  
Deke C. Siren  
William J. Skinner  
Lee D. Slater  
Garrett E. Sleeman  
Peter A. Slovinsky  
Donald W.L. Smellie  
Erik A. Smith

New Members  
continued on p. 32

— Attention GSA Exhibitors and Advertisers —

# EXPAND

Y O U R M A R K E T

**WHO:** GSA advertising and exhibiting supporters who want to ...

**WHAT:** Reach those who attend the GSA 2000 Annual Meeting in Reno AND remind the membership of your presence at the show!

**WHERE:** The October issue of *GSA Today* is scheduled to be available on-site in Reno for meeting attendees to pick up! And, the February 2001 issue of *GSA Today* will feature a full-color wrap up of the Annual Meeting. Both are bonus distribution issues!

**WHEN:** Reserve your space now! Space reservations  
Oct issue: Aug. 20 (art due Sept 5). Feb. issue: Dec. 20 (art due Jan. 5).

**WHY:** For less than a penny per reader you can be introduce attendees and *GSA Today* readers to your products and services.

**HOW:** Contact GSA Advertising Coordinator Ann Crawford: 1-800-472-1988 x153  
by e-mail: [acrawford@geosociety.org](mailto:acrawford@geosociety.org)

Exhibitor/Advertisers: Call to learn how you can receive a 10% discount on space rates for these issues.

# CRYSTALClear

VISIT OUR WEBSITE

[www.meijitechno.com](http://www.meijitechno.com)

## The Meiji EM Series of Modular Stereo Microscopes.

If you are looking for precision, durability, quality and value in a stereo microscope, we invite you to take a closer look at Meiji's EM Series of Stereo Microscopes.

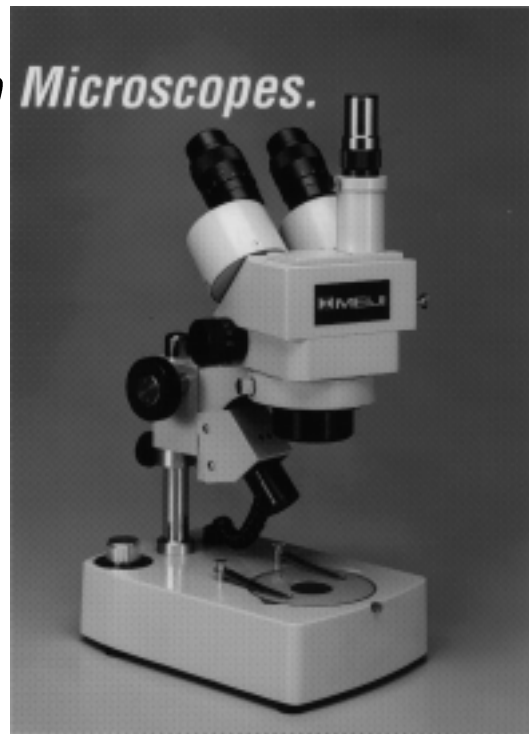
The modular design (A wide variety of bodies, single magnification or zoom— rotatable 360°, auxiliary lenses, eyepieces, stands, holders, etc.) gives you the freedom to create the ideal instrument for your specific needs or application, and Meiji stands behind every instrument with its limited **Lifetime Warranty**.

*For more information on these economically priced stereo microscopes, please call, FAX or write us today.*



### MEIJI TECHNO AMERICA

2186 Bering Drive, San Jose, CA 95131, **Toll Free Telephone: 800.832.0060**  
FAX: 408.428.0472, Tel: 408.428.9654



#### New GSA Members *continued from p. 31*

Kevin H. Smith  
Michael E. Smith  
Charles B. Snell  
Bogie Soedjatmikoet  
Gary S. Solar  
Anton I. Sotirov  
Michael Sperazza  
Anne T. Spires  
Dale K. Splinter  
Thomas W. Stafford Jr.  
Beverly D. Stambaugh  
Heather I. Evenstar Stanton  
Kerrilyn P. Steck  
Edward G. Stermer  
Dion C. Stewart  
Traci L. Stokes  
Alan G. Stone  
Balin B. Strickler  
Randolph C. Stuart  
Bonnie W. Styles  
Raden Sukhyar  
Toni B. Superchi  
D. Matthew Surles  
Michael R. Taber  
Jocelyn R. Tamashiro  
Charles J. Tapper  
Jason M. Taylor  
Ryan Z. Taylor  
Lora Teitler  
Maria J. Teixeira

Robert S. Terefenko  
Richard E. Terry  
Leanne S. Teruya  
Michael M. Thacker  
Mark H. Thiemens  
Christopher W. Thomas  
John T. Thomas  
Ryan D. Thomas  
Sabine F. Thomas  
Anna Thompson  
Jennifer L. Thompson  
Joseph A. Thompson  
Allison M. Thomson  
Trista L. Thornberry  
Anne C. Tillery  
Sarah E. Tindall  
Beth K. Tober  
Keryn Tobler  
Eric Tohver  
Kenneth P. Tomlin  
Max A. Torres  
James C. Trask  
Steven T. Travers  
Selina Tribe  
Alec J. Tsongas  
Courtney H. Turich  
Henry L. Turner III  
Bradley Scott Tye  
Michael A. Ukynowicz  
Ryan W. Vachon  
Shelby R. Valenzuela  
Peter M. Valley  
Christopher M. Van de Ven

Colby J. VanDenburg  
Darrel A. Vandeweg  
Ryan G. Vannier  
Angela M. Vasquez  
Florence R. Vaughan  
Philip L. Verplanck  
Warren Dean Vestal  
Marilyn B. Vogel  
Stefan W. Vogel  
Michelle L. Volosin  
George Voulgaris  
Bradley R. Wakoff  
Eric L. Walston  
Bronwen Wang  
Jianlin Wang  
Yumei Wang  
Jacob S. Waples  
David J. Warren  
H. Patricia Warthan  
Jeffrey P. Waters  
Gordon R. Watt  
Lars Weiershauser  
Beth N. Weisenborn  
Brian C. Welch  
Susan A. Welch  
Stanford R. Weltner  
Amy T. Welty  
Kemble White  
Steven W. White  
Laurie A. Whitesell  
Jaime S. Whitlock  
Donald O. Whittemore  
J. David Wildharber

Lester J. Williams  
Matthew A. Wills  
Anna B. Wilson  
John R. Wilson  
Judy L. Wilson  
Demian E. Wincele  
Timothy R. Wineland  
Brian L. Wingard  
Michael T.D. Wingate  
Deborah H. Winiarski  
Lee Winters  
Ivana C. Witt  
Chad A. Wittkop  
John A. Wolff  
Ansley Wren  
Joanna L. Wright  
Michael B. Wyatt  
Wenjiao Xiao  
Claire A. Yannacone  
Nicole D. Yarger  
Hideyoshi Yoshioka  
Graham A. Young  
Leah D. Young  
Kate E. Zeigler  
Daniel L. Zeltner  
Hongwei Zhang  
Yue Zhao  
Li Zheng  
Cathy L. Zumsteg



## Summit ▲ 2000

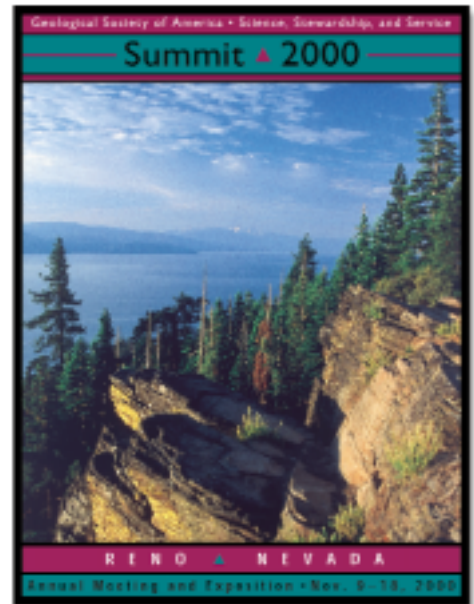
## GSA Annual Meeting and Exposition

Reno, Nevada

November 9–18, 2000

**GSA will feature great science at Summit 2000!****Pardee Keynote Sessions  
(invited speakers)**

This year's Pardee Keynote Symposia features eight topics of broad interest to the geoscience community.

**Sessions for Monday, November 13, and Tuesday, November 14:****K1 ▲ Geology in the New Millennium I: Resource Collapse, Environmental Catastrophe, or Technological Fix?**

Stephen L. Gillett, Mackay School of Mines, Reno, Nevada. Monday, November 13, 8 a.m.–12 noon.

Is the 21st century headed for catastrophic resource shortages or environmental apocalypse, as has been predicted since the 1970s? Or will new technologies come onstream quickly enough to avert disaster? This session contrasts both views, with presentations both by leaders in various emerging technologies and by those who view resource shortages as imminent. ORAL

**K4 ▲ A New Age of Planetary Exploration: Sample Returns, In Situ Geological Analysis, and Human Missions to Other Worlds**

*GSA Planetary Geology Division.* Ralph Harvey, Case Western Reserve University, Cleveland, Ohio; Cassandra Coombs, College of Charleston, Charleston, South Carolina. Monday, November 13, 1:30–5:30 p.m.

Sample return missions, new in-situ geological tools, and the return of human geologists to alien outcrops promise to revolutionize planetary geology in the coming decades. Presentations by project scientists will introduce and discuss upcoming or planned planetary missions that exemplify the translation of traditional “hands-on” geology to other worlds, including Mars, the asteroids, comets, the Moon, and the Sun. ORAL

**K7 ▲ Nuclear Waste Disposal: Bridging the Gap Between Science and Policy**

*GSA Hydrogeology Division.* Jane C.S. Long, Mackay School of Mines, Reno, Nevada; Kevin D. Crowley, Board on Radioactive Waste Management, Washington, D.C.; Jean M. Bahr, University of Wisconsin, Madison. Tuesday, November 14, 8 a.m.–12 noon.

What is the scientific process of developing confidence in the long-term performance of a repository, and how does this process relate to the policy-making process? Two panels will examine the science of perfor-

mance prediction and how scientists can communicate the science and its uncertainties to nonscientists and policymakers. ORAL

**K6 ▲ Living with Uncertainty: Scientific, Political, and Societal Perspectives**

*GSA Institute for Earth Science and the Environment.* Christine Turner, U.S. Geological Survey, Denver, Colorado; Robert Frodeman, University of Colorado, Boulder. Tuesday, November 14, 1:30–5:30 p.m.

How does science understand uncertainty? What are society's expectations concerning our ability to provide answers to societal problems? Speakers in this symposium will address: shifting priorities in hazards research; how complexity changes our perceptions of nature; the promises and drawbacks of predictive modeling; public perceptions of uncertainty; and how the USGS Center for Science Policy addresses these issues. ORAL

Check your September *GSA Today* for Pardee Sessions scheduled for Wednesday and Thursday, November 15 and 16.

**For a complete listing of Topical Sessions scheduled for GSA's Annual Meeting in Reno, visit [www.geosociety.org](http://www.geosociety.org)**

TIME CHANGE

**ATTENTION, STUDENTS!**

President's Student Breakfast Reception  
at the GSA Annual Meeting

Monday, November 13,  
7:00 to 8:30 a.m.

*GSA President Mary Lou Zoback invites all students registered for the meeting to attend a free breakfast buffet sponsored by ExxonMobil Corporation. Registered students will receive complimentary coupons redeemable toward the breakfast buffet and will be eligible for prize drawings.*

Sponsored by



Hosted by GSA

# New GSA Student Associates

The following Student Associates became affiliated with the Society during the period from October 1999 through February 2000.

|                          |                          |                         |                              |
|--------------------------|--------------------------|-------------------------|------------------------------|
| Matthew A. Abahazi       | Rhiannon L. Crain        | William S. Hammon III   | Whitney N. Littleton         |
| Kelly B. Adams           | Christopher J. Crosby    | Dean A. Hancock         | Ashley J. Lucht              |
| Miriam R. Akselrod       | James H. Cunningham      | Ryan S. Haney           | Patrick Benjamin Luetkemeyer |
| Amanda L. Albright       | Andrew J. Cyr            | David N. Harden         | Jeanette Lyman               |
| David L. Allen           | Ann C. Davis             | Christopher M. Hare     | Mandela A. Lyon              |
| Katie E. Amos            | Caroline A. Davis        | Brian S. Hartman        | Tyler W. Mace                |
| Philip S. Anderson       | Nicholas A. Davis        | Jessica S. Hartman      | John S. MacLean              |
| Tanya Ariowitsch         | Christopher M. DeCioccio | Jason E. Heath          | Marc A. Macy                 |
| Jennifer Aschoff         | Megan K. DeSmedt         | Gary L. Henry II        | Zoie Mahar                   |
| Rebecca K. Atkinson      | Heather L. DeStefano     | Jonathan J. Hess        | Edward H. Marks              |
| Seth L. Atkinson         | John L. Dolde            | Cyndi D. Hilliker       | Aaron W. Marshall            |
| Nicole M. Badon          | Carolyn Domrose          | Bryan W. Hitchcock      | Joseph P. Matoush            |
| Margaret A. Bagby        | Franklin Dorin           | Robert F. Hopkins       | Kasey L. McCall              |
| Stefan Bagnato           | Kathleen E. Dotson       | Danielle M. Huminicki   | Brian McDaniel               |
| Megan S. Barnes          | Jason P. Dowdy           | Michelle A.E. Huminicki | Benjamin A. McGinnis         |
| Jennifer A. Barrows      | Andrew J. Downs          | Katrina H. Hunter       | April D. McGreger            |
| Alexander J. Bartholomew | Kelly A. Dreibelbis      | Bretagne N. Hygelund    | James B. McGuire             |
| Laura R. Bassani         | Kelly C. Driggers        | Alison M. Iwerks        | Rory D. McIlmoil             |
| Jason A. Batus           | Alison R. Duvall         | Laura E. Jacobs         | Danette McKenney             |
| Brian C. Bauer           | Amanda L. Eads           | Miriam A. Jaffee        | Traci L. McMillin            |
| Mark Beaman              | Mark J. Earnshaw         | Christina D. Jan        | Abigail V. McQueen           |
| Linda R. Bearss          | Daniel J. Eastmond       | Derek E. Janda          | Jodie L. Medico              |
| William C. Beck          | Jonathan K. Eaton        | Amanda L. Jenkins       | Brian A. Meley               |
| Kristeen M. Bennett      | Sandi L. Edwards         | Kristi M. Johannes      | Laura C. Merrell             |
| Jennings Berger          | Amanda I. Ellison        | Ernest L. Johnson III   | Sean C. Metz                 |
| Aaron J. Berndt          | Mathew E. Elwell         | Sally C. Johnson        | Nicholas R. Meyer            |
| Amy K. Bingham           | Amy C. Englebrecht       | Gregory D. Joslin       | Ambre Kay Middleton          |
| Jennifer L. Blanton      | Jennifer D. Eoff         | Matthew L. Justus       | Joshua H. Miller             |
| Amanda L. Booth          | Timothy J. Ewing         | Julie C. Kafcas         | Joshua J. Miller             |
| Charles M. Bove          | David W. Farris          | Todd J. Kast            | Stefan M. Mitrovich          |
| Daniel T. Bowen          | Nicole A. Feldl          | Wesley T. Keller        | Matthew D. Mittenthal        |
| Kerry H. Bowen           | Chad A. Ferguson         | Laura C. Kellogg        | Robert F. Montgomery         |
| Melissa A. Boysun        | Christopher J. Finney    | Megan J. Kelly          | Jason C. Mooney              |
| Matthew M. Brabeck       | Ann H. Finocchio         | Bryan A. Kelve          | Kevin R. Morrison            |
| Jeremy M. Brack          | Emily Rose Fojut         | Kathleen M. Keranen     | Ken P. Mueller               |
| Bethany A. Bradley       | Wesley H. Foll           | Shawn D. Kerr           | Glenn Mutti                  |
| Paul T. Brandes          | Joshua D. Frank          | Shanna M. Kevorkian     | Emily A. Ness                |
| Jody L. Brandrup         | T.J. Fudge               | Julie C. Kickham        | Holly J. Nichols             |
| Stephanie M. Briggs      | Stephanie R. Fuentes     | Leyla D. Kirkpatrick    | Brian L. Nicklen             |
| Cassandra A. Brown       | Zamara Fuentes           | Jeff C. Kirtley         | Brian E. Nixon               |
| Rebecca J. Brown         | Sarah J. Fuller          | Georgia E. Knauss       | Eric D. Noreen               |
| Robert J. Brown          | Tina L. Gammill          | Renee J. Knecht         | Vanessa J. O'Brien           |
| Amy L. Bruggeman         | Claudia Garcia           | Joseph W. Knight        | Jay C. Odaffer               |
| Jennifer L. Bryson       | Nicoli Garner            | Karolyn J. Knoll        | Julie A. O'Leary             |
| James F. Bujno           | Jaime L. Garrand         | Lori A. Koehler         | Brandy R. O'Neill            |
| Brad A. Burdick          | Marcus O. Gary           | Sarah M. Koenigsberg    | Richard J. Orner             |
| Sarah R. Burton          | Marko Gellissen          | Matthew V. Kohlbecker   | Ernest Michael Oswald        |
| Eric M. Butler           | Megan G. Gerseny         | Clifton R. Koontz       | Robert K. Outlaw             |
| Sean K. Canada           | Stacy A. Gilbreth        | Joseph P. Kopera        | Larry M. Owsley              |
| John M. Canerdy          | Emily M. Gilles          | Jesse T. Korus          | Brien K. Park                |
| Leigh Childs Cantey      | Samuel P. Gillet         | Seth C. Kruckenberg     | Wayne E. Patterson           |
| Elizabeth A. Carruth     | Rebecca E. Glatz         | Eric J. Kuhl            | Sandra C. Pavick             |
| Laura E. Chambers        | Tom P. Gleeson           | Angela R. Kurth         | Jennifer C. Payne            |
| Heung-ngai Chan          | Mary E. Gossage          | Gabrielle Elise Kurth   | Robert R. Perez              |
| Robert L. Chandler       | Francis M. Gough         | Sage A. Kutzman         | Paul A. Petersen             |
| Mark A. Chapa            | Greg F. Grabner          | Jae Jong Kwak           | Caryn A.O. Peterson          |
| Nicholas J. Chrobak      | Jason D. Graves          | Patrick S. Lam          | Nicholas M. Petruzzi         |
| Elizabeth A. Clark       | Jeanette M. Greenidge    | William J. Lambert      | Erin H. Phillips             |
| Sarah J. Clifthorne      | Bryant J. Griggs         | Alyssa A. Lanier        | Rebecca A. Pitts             |
| Alvin L. Coleman Jr.     | James D. Groesbeck Jr.   | Stephanie D. Larsen     | Jaime L. Piver               |
| James P. Conroy          | Jason D. Grubb           | Susan K. Larson         | C. Stephen Plant             |
| Mary Jane Coombs         | Lizbet Guijarro          | Jason T. Lennne         | Mark A. Plas                 |
| Jennifer R. Cooper       | Richard J. Hall          | Jamie S.F. Levine       | Mary Beth Platt              |
| Rebecca L. Cox           | Julie M. Hamblock        | Noel C. Liner           | Philip A. Polk               |

Meagen A. Pollock  
 Sue M. Potter  
 Rachael M. Potts  
 Timothy L. Pranger  
 Christina A. Progress  
 J. Gayle Pugh  
 Lacie LaNeille Quintin  
 David M. Rachal  
 Richard M. Rader  
 Mike Rampey  
 Alan S. Rapp  
 William M. Ratcliffe  
 Lily A. Ray  
 Cory M. Redman  
 Thomas K. Reese  
 Christopher J. Regan  
 Timothy P. Reilly  
 Erik S. Reinert  
 Kendra J. Remley  
 Kanya A. Rhedrick  
 Noelle Richard  
 Kara A. Richardson  
 Shauna J. Riedel  
 Luis A. Rios  
 Kathleen M. Roberts  
 Patricia E. Robinson  
 William C. Robinson  
 James B. Rondeau  
 Eric L. Rothwell  
 Jenee L. Rowe  
 Heather R. Roy  
 Richard J. Rudd  
 Stacia D. Russo  
 Carolyn H. Ryder  
 A. Brady Sabelli  
 Joe Sadera  
 Tanaporn Sakulpitakphon  
 Cara M. Santelli  
 Cindy L. Satterfield  
 Stephan Schayen  
 Rachel T. Schelble  
 Kevin A. Schleh  
 Nicholas C. Schmerr  
 Brian P. Seneker  
 Michael D. Senglaub  
 Jeffery S. Shaner  
 Gary R. Shehane  
 Joshua Shenker  
 Audrey F. Sherry  
 Sarah J. Shoemaker  
 Lesley P. Short  
 Karin W. Shultz  
 Renee C. Sietmann  
 Adrienne M. Sims  
 Jonathan M. Skaggs  
 Jack A. Skeahan  
 Michael K. Small  
 Eric G. Smith  
 Jocelyn Smith  
 Lauren A. Smith

Abigail R. Spieler  
 Issac D. Standard  
 Amy P. Stanik  
 Charles M. Steele  
 Noelle A. Steele  
 Donovan Steutel  
 Grant Tanner Stewart  
 Jason A. Stine  
 Randy L. Stotler  
 Diana B. Strickland  
 Steven S. Suk  
 Biyai D. Suku-Ogbari  
 Jeffrey J. Supplee  
 Dustin E. Sweet  
 Lindsay A. Szramek  
 Darren A. Szuch  
 Andrew W. Taylor  
 Peter B. Taylor  
 Tiffany F. Tchakirides  
 Elizabeth L. Tenpenny  
 Rena Thiagarajan  
 David W. Thomas  
 Samuel P. Thompson  
 Kelly R. Titkemeier  
 Darren L. Tollstrup  
 Laurie L. Trevizo  
 Yasemin I. Tulu  
 Kenzie J. Turner  
 Anna K. Tye  
 Matthew J. Udovitsch  
 Patrick G. Umphenour  
 Annemarie D. van Biemen  
 Dolores A. van der Kolk  
 Isaac J. Vandergon  
 Sarah E. VanGelder  
 Catherine E. Vaughan  
 Emily M. Von Bergen  
 Kristina M. Walker  
 Michael C. Wall  
 Michael J. Wallace  
 Matthew D. Walters  
 Brian W. Warner  
 Dawn L. Wells  
 Christine R. Wennen  
 Laura J. Wilcox  
 Jason E. Williams  
 Mark A. Williams  
 Kyle H. Willis  
 Brant R. Wilson  
 Nicholas A. Wojciek  
 Jennifer M. Wolters  
 Flavia L. Wood  
 Sharon M. Woods  
 Lynn R. Yarmey  
 Andrew A. Young  
 Erin M. Young  
 Aimee M. Zipf ■

## GSA Bulletin Adopts New Page Charge Policy

For all new manuscripts received by the *GSA Bulletin* after August 31, 2000, page charges will be voluntary for the first 10 published pages only. All pages in excess of 10 will incur a mandatory charge of \$125 per page.

This policy was recommended by the GSA Publications Committee and approved by the GSA Council at its May 2000 meeting. The mandatory page charges are intended to serve as a mechanism to decrease the length of articles submitted, which should result in more papers published in each issue and papers published more rapidly. In this way the *Bulletin* can continue to publish diverse topics without incurring excess publishing costs.

## AUGUST *Bulletin and Geology* Highlights

Visit *Bulletin and Geology* at [www.geosociety.org](http://www.geosociety.org).  
 This online service is free for a limited time.

### In August *Bulletin*



- ◆ Isotopic provinciality of the Mojave Desert
- ◆ Volcanic hazards along the Mexico-Guatemala border
- ◆ Cosmogenic ages for the Last Glacial Maximum, Arctic Canada

### In August *Geology*

- ◆ Ecology of extinctions
- ◆ Ooze clues
- ◆ Climatic diaspora
- ◆ Early gas stations
- ◆ Sensing a remote volcano



For subscription information,  
 call toll-free 1-888-443-4472  
 or e-mail [member@geosociety.org](mailto:member@geosociety.org).

# Hypoxia in the Gulf of Mexico: Causes, Consequences, and Political Considerations

T.M. Kennedy\* and T.W. Lyons, Department of Geological Sciences, University of Missouri, Columbia, MO 65211

Each year as the snows of the northern plains melt and crop-nourishing rains fall on fields throughout the Mississippi River Basin, a nutrient-rich freshwater plume enters the northern Gulf of Mexico. The resulting biological blooms and subsequent decreases in dissolved oxygen are issues of great ecological concern. Fertilizer use throughout the central United States has been implicated in an ongoing political and scientific debate. However, the pace and mechanisms of corrective action may be dictated more by economics and corresponding political clout than by the severity of habitat perturbation.

With the increasing urbanization of our coastal regions and agricultural expansion in major river basins, oxygen deficiencies are becoming a major environmental problem in coastal waters throughout the world. These deficiencies are referred to as hypoxia when dissolved oxygen levels drop below 2 mg/L relative to ~7 mg/L for nonhypoxic times. Low oxygen concentrations occur naturally in stratified marine settings such as the Black Sea. In recent years, however, increased nutrient runoff from the continents has exacerbated natural hypoxia and has caused hypoxia and anoxia at previously well-oxygenated sites.

Seasonal depletions in oxygen on the Louisiana continental shelf extend westward from the Mississippi Delta and are the most extensive example of marine hypoxia in the United States (Fig. 1A). Like any occurrence of hypoxia, a number of complex processes contribute to its development, the most significant of these being eutrophication and stratification of freshwater over denser saline water. Eutrophication is an enrichment in dissolved nutrients (especially nitrogen and phosphorus) that promotes increased primary production. As the abundant phytoplankton die and set-

tle to the ocean floor, bacterial decay consumes oxygen faster than photosynthesis can replace it. Under ordinary circumstances, oxygen depletions are short-lived because of natural downward mixing of water in contact with the oxygen-rich atmosphere. In some cases, however, density stratification inhibits mixing between fresh and saline waters. In the northern Gulf of Mexico, freshwater inputs from the Mississippi-Atchafalaya River Basin cause such stratification.

The combined influence of stratification and river-supplied nutrients in the Gulf is evident in annual measurements of the hypoxic zone's areal extent (Fig. 1B). The smallest recorded hypoxic zone, for example, occurred in 1988, a drought year. By contrast, a year of severe flooding, 1993, showed an increase in areal extent of >50% beyond the previous year. The hypoxic zone has remained large since 1993, culminating with the largest recorded zone spanning some 20,000 km<sup>2</sup> in the summer of 1999. The seasonal trends for Gulf hypoxia further link the stratification and nutrient enrichments to riverine contributions (Fig. 1C). Depletion of oxygen begins in the spring and reaches its highest point in the mid-summer,

reflecting the expected lag between peak river discharge in the late winter or early spring and the productivity-linked consumption of oxygen.

In 1998, Congress passed the Harmful Algal Bloom and Hypoxia Research and Control Act, which allocates approximately \$11 million over three years for research and monitoring of hypoxia. In this context, a task force was established to assess the nature, causes, and consequences of Gulf hypoxia and to propose strategies for controlling it. Since the posting of the initial integrated assessment, various special interest groups have responded and remain close to the discussion (their comments and the assessment are available at [www.nos.noaa.gov/products/pubs\\_hypox.html](http://www.nos.noaa.gov/products/pubs_hypox.html), June 2000). Involvement of these groups has centered on several points of heated controversy, beginning with the primary cause of eutrophication. Mass balance analysis of inputs and outputs within the basin indicates that fertilizer is responsible for 50% of the input of all nitrogen to the waters of the Mississippi-Atchafalaya River Basin, which makes it the primary source of Gulf nitrogen enrichment. Less significant contributors include soil erosion, manure,

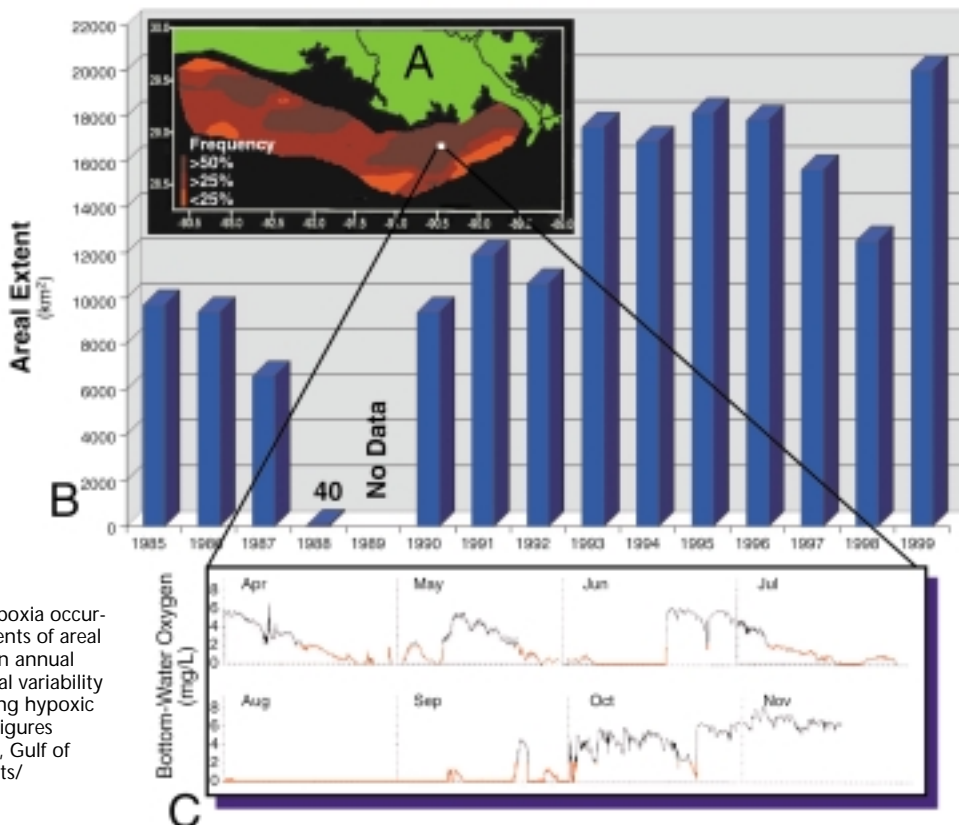
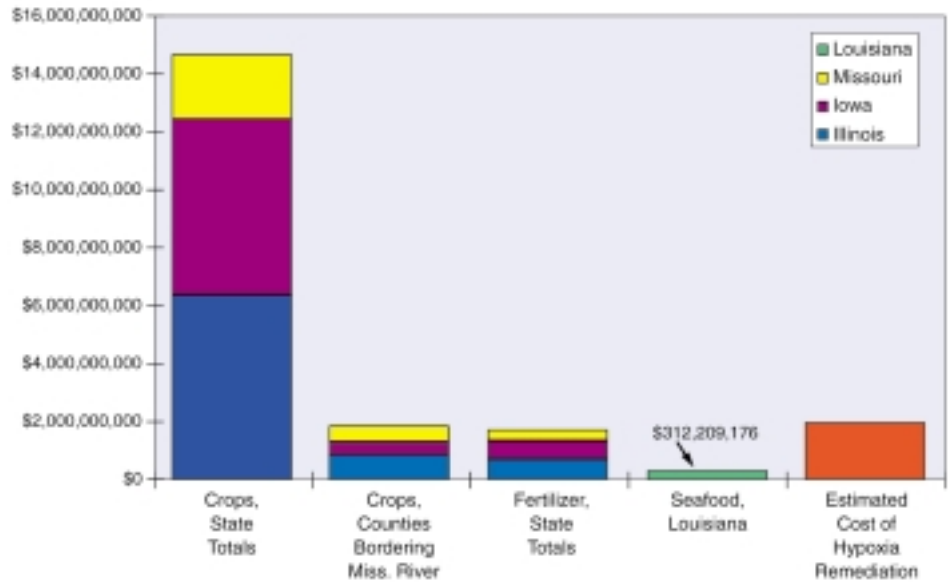


Figure 1. Temporal trends. A. Frequency of hypoxia occurrence, 1985–1997, based on annual measurements of areal extent. B. Areal extent of hypoxic zone based on annual measurements taken in mid-summer. C. Seasonal variability of bottom-water oxygen at a single station during hypoxic interval of 1993. Data in red indicate hypoxia. Figures modified from Rabalais et al. (1999, Topic no. 1, Gulf of Mexico Assessment; [www.nos.noaa.gov/products/pubs\\_hypox.html](http://www.nos.noaa.gov/products/pubs_hypox.html)).

\* Present address: Yale Law School, New Haven, CT 06520.

Figure 2. Total market value of crops, fertilizer, and seafood for 1997 compared to the estimated total cost of leading proposal for reducing nutrient loads to Gulf of Mexico. Data from U.S. Department of Agriculture, National Oceanic and Atmospheric Administration, and Doering et al. (1999, Topic no. 6, Gulf of Mexico Assessment; www.nos.noaa.gov/products/pubs\_hypox.html).



legumes, atmospheric deposition, and municipal and industrial waste. Nevertheless, the American Farm Bureau and the Fertilizer Institute contend that more research is needed to unambiguously (i.e., quantitatively) link fertilizer to nitrogen runoff into the Mississippi River. The Fertilizer Institute has downplayed the significance of contributions from fertilizer by stressing, among other factors, increased freshwater flow and the resulting relationship between water-column stratification and hypoxia.

A second flurry of controversy is clustered around the effect of hypoxia. When oxygen becomes scarce, faunal communities migrate to areas of higher oxygen or, in the case of many less mobile organisms, perish. This idea of a “dead zone” has attracted the popular press to the issue of hypoxia with a focus typically on the potential damage to the fishing industry. Despite this focus, the sparse existing data suggest that yearly yields in the regional fish and shrimp catch have not been economically affected in any way directly attributable to hypoxia because these organisms are able to escape from areas of low oxygen. Shrimpers maintain their yields by shifting their efforts to the margins of the hypoxic zone where migrating shrimp are in abundance. In fact, Richardson and Jørgensen (1996, *Eutrophication in coastal marine systems, Coastal and Estuarine Studies*, 52, American Geophysical Union, Washington, D.C.) in their general survey of coastal hypoxia noted that slightly reduced oxygen can be a boon to the local fishery by focusing the fish (and, by inference, shrimp) toward the boundary of the oxygen-deficient region.

This emphasis on the fishing industry diverts attention away from potentially more calamitous consequences. Annual ecological perturbations in the Gulf could have catastrophic long-term impacts by preventing the reestablishment of prehypoxia marine communities. Harmful algal blooms are one example of an ecosystem imbalance associated with the same nutrient fluxes that cause hypoxia. Current policy discussions have alluded to but have never explicitly addressed the essential question: What magnitude of habitat modification and loss of noncommercial species is acceptable in the absence of immediate or even long-term dire consequences to the fishing industry?

Proposed solutions are also controversial. As the integrated assessment notes,

water-quality models predict that reducing nutrient loads by 20%–30% should increase dissolved bottom-water oxygen by 15%–50%. Reduction of nutrients by 30%–50% could bring about a 20%–75% increase in oxygen. To make such reductions, researchers recommend multiple strategies, such as construction of wetlands in the Mississippi River Basin, reduction of fertilizer application, use of alternative cropping systems, and reduction of feedlot runoff. Any combination of these strategies would be costly, and models for such a complex system are inherently uncertain. Nevertheless, research summarized in the draft of the integrated assessment indicates that the most cost-effective means of reducing nutrient loads by 20% would be a combination of a 20% reduction in fertilizer application and construction of five million acres of wetlands. According to the Fertilizer Institute, this proposal is too expensive in light of the uncertainty surrounding economic benefits to fisheries and is inadequately justified by existing scientific data. Institute officials specifically noted in their response to the proposed remediation strategies that, “...the recommendations would relegate farmers to economic poverty, and the benefit of this policy is a complete unknown.”

Inherent polarity in the scientific interpretations is not the only factor determining what solutions, if any, will be implemented. Economically speaking, agribusiness and the Gulf fishing industry stand at opposite extremes in this debate. Agribusiness is a staple of the American economy, having contributed \$98 billion through crop sales in 1997 (www.usda.gov/nass, June 2000). By contrast, the value of commercial fishing in the entire Gulf of Mexico for 1997 was only \$762 million (www.st.nmfs.gov, June 2000). Total crop sales in 1997 exceeded \$15 bil-

lion for the top three buyers of fertilizer in the region most likely to be impacted by Gulf hypoxia reduction policy (Illinois, Iowa, and Missouri). This figure stands in clear contrast to the \$312 million value of Louisiana seafood landings in 1997 (Fig. 2). Even when compared only to fertilizer expenditures in Illinois, Iowa, and Missouri, or to the value of crops in only those counties bordering the Mississippi River, the Gulf seafood landings are minor. From a purely economic standpoint, the cash value of these landings fails to justify the \$2.08 billion total cost of the proposed solutions.

Differences in the value of crops and landings are reflected in disparities in representation and, ultimately, in relative lobbying strength within the political arena. For example, the American Farm Bureau represents nearly five million families in 50 states and Puerto Rico (www.fb.com, June 2000). By contrast, the largest organization representing Louisiana fishermen on environmental issues has a membership of about 350 fishermen, and annual dues are just \$100. Run solely by volunteers, the Gulf Coast Commercial Fishermen’s Coalition cannot engage in lobbying activities because of its status as a nonprofit organization.

These inequalities have affected hypoxia policy discussions. The American Farm Bureau, the Fertilizer Institute, and other agribusiness interest groups have aggressively represented their constituents throughout the discussions. These well-funded and well-staffed organizations have attended formal meetings, issued press releases, made extensive public comments, and have lobbied at state and federal levels. According to the Center for Responsive Politics, nontobacco agricultural interest groups reported lobbying

Hypoxia continued on p. 38

# CALENDAR

Only new or changed information is published in *GSA Today*. A complete listing can be found in the Calendar section on the Internet: [www.geosociety.org](http://www.geosociety.org).

## 2000 Meetings

### October

October 22–24, American Society for Testing and Materials Committee E29 on Particle and Spray Characterization, Orlando, Florida. Information: Jim Olshefsky, ASTM, (610) 832-9714, fax 610-832-9555, [jolshefs@astm.org](mailto:jolshefs@astm.org).

### November

November 9–12, Association for Women Geoscientists Fall Board of Directors Meeting, Reno, Nevada. Information: AWG, P.O. Box 280, Broomfield, CO 80038-0280, [office@awg.org](mailto:office@awg.org).

November 13–14, American Society for Testing and Materials Committee E20 on Temperature Measurement, Orlando, Florida. Felicia Quinzi, ASTM, (610) 832-9738, fax 610-832-9555, [fquinzi@astm.org](mailto:fquinzi@astm.org).

## 2001 Meetings

### January

January 12–16, International Conference on the Geology of Oman, Muscat, Sultanate of Oman. Information: Organizing Committee, International Conference on the Geology of Oman, Directorate General of Minerals, Ministry of Commerce and Industry, P.O. Box 550, Muscat 113, Sultanate of Oman, [geoconfoman@mpi.unibe.ch](mailto:geoconfoman@mpi.unibe.ch), [www.geoconfoman.unibe.ch](http://www.geoconfoman.unibe.ch). (Abstract and registration deadline: September 1, 2000.)

### May

May 27–30, St. John's 2001, Geological Association of Canada–Mineralogical Association of Canada 2001 Joint Annual Meeting, St. John's, Newfoundland, Canada. Information: St. John's 2001, c/o Department of Mines and Energy, St. John's, NF A1B 4J6, Canada, (709) 729-2301, fax 709-729-3493, [dmp@zeppo.geosurv.gov.nf.ca](mailto:dmp@zeppo.geosurv.gov.nf.ca), [www.geosurv.gov.nf.ca](http://www.geosurv.gov.nf.ca/stjohns2001).

### June

June 19–22, 17th International Mining Congress and Exhibition of Turkey, Ankara,

Turkey. Information: Bahtiyar Unver, Co-Chairman, Organizing Committee, Department of Mining Engineering, Hacettepe University, Beytepe Ankara, 06532 Turkey, 90-312-297-7696, fax 90-312-299-2155, [unver@hacettepe.edu.tr](mailto:unver@hacettepe.edu.tr), <http://www.mining-eng.org.tr>. (Abstract deadline: October 31, 2000.)

### July

July 7–10, American Rock Mechanics Association's DC Rocks 2001, 38th U.S. Rock Mechanics Symposium, Washington, D.C. Information: John Tinucci, Technical Program Chair, PanTechnica Corporation, (952) 937-5879, fax 952-949-4364, [jtinucci@pantechnica.com](mailto:jtinucci@pantechnica.com), [www.armarocks.org](http://www.armarocks.org). (Abstract deadline: October 1, 2000.)

### August

August 31–September 12, Field Excursion to the Skaergaard Intrusion, Kangerdlugssuaq, East Greenland. Information: Jens C. Andersen, Camborne School of Mines, University of Exeter, Redruth, Cornwall, UK, 44-1209-714866, fax 44-1209-716977, [andersen@csm.ex.ac.uk](mailto:andersen@csm.ex.ac.uk), [www.ex.ac.uk/CSM/news/conf.htm](http://www.ex.ac.uk/CSM/news/conf.htm). (Deposit due by September 1, 2000.)

## Hypoxia continued from p. 37

expenditures of nearly \$52 million in 1998 ([www.opensecrets.org](http://www.opensecrets.org), June 2000). The American Farm Bureau alone reported spending over \$4.5 million in that year. The fishing industry, by contrast, has been conspicuously absent from nearly all aspects of the policy process.

Ultimately, substantive corrective action will be slow in coming within the muddled political context of Gulf hypoxia. The fishing industry lacks the resources and perhaps motivation to galvanize public and congressional opinion and thus may be ineffective as a political catalyst. While the details of the scientific arguments warrant further study and debate, the preponderance of scientific research has unambiguously identified agriculture as the single greatest contributor to Gulf hypoxia. Ultimately, the issue of fertilizer-linked, seasonal oxygen depletion in the Gulf of Mexico speaks directly to the level of environmental perturbation that may be tolerated in the absence of catastrophic economic loss and imminent threat to public health—particularly given the estimated cost of correction. Like all nonpoint-source pollution in which the effect is spatially decoupled from the cause, and in which scientific details are worked and reworked by multiple groups, it will be a challenge to convince Congress and the public that action is necessary. ■

## CLASSIFIED ADVERTISING

Published on the 1st of the month of issue. Ads (or cancellations) must reach the GSA Advertising office one month prior. Contact Advertising Department (303) 447-2020, 1-800-472-1988, fax 303-447-1133, or e-mail: [acrawford@geosociety.org](mailto:acrawford@geosociety.org). Please include complete address, phone number, and e-mail address with all correspondence.

| Classification             | Per Line for 1st month | Per line for each add'l month (same ad) |
|----------------------------|------------------------|---|
| Situations Wanted          | \$1.75                 | \$1.40                                  |
| Positions Open             | \$6.50                 | \$5.50                                  |
| Consultants                | \$6.50                 | \$5.50                                  |
| Services & Supplies        | \$6.50                 | \$5.50                                  |
| Opportunities for Students |                        |   |
| first 25 lines             | \$0.00                 | \$2.35                                  |
| additional lines           | \$1.35                 | \$2.35                                  |
| Code number: \$2.75 extra  |                        |   |

Agencies and organizations may submit purchase order or payment with copy. Individuals must send prepayment with copy. To estimate cost, count 54 characters per line, including all punctuation and blank spaces. Actual cost may differ if you use capitals, centered copy, or special characters.

To answer coded ads, use this address: Code # ----, GSA Advertising Dept., P.O. Box 9140, Boulder, CO 80301-9140. All coded mail will be forwarded within 24 hours of arrival at *GSA Today* office.

## Positions Open

### LABORATORY COORDINATOR/LECTURER DEPARTMENT OF GEOLOGY BRYN MAWR COLLEGE

The Department of Geology at Bryn Mawr College invites applications for a coordinator of introductory laboratories beginning January 2001. This is a full-time (9-month), continuing, non-tenure-track position. Initial appointment will be for three years. Primary responsibilities will include: design and supervision of laboratories for introductory courses in physical, historical, and environmental geology

(in cooperation with other faculty); training and supervision of graduate and undergraduate teaching assistants; oversight of laboratory specimens and demonstration equipment; field trip planning and logistics; and oversight of department rock preparation, field, and/or computer equipment. This person will also teach one course each year and may supervise student research.

We seek a dynamic individual with a high level of intellectual curiosity and a demonstrated interest and ability in undergraduate education. While the field of specialization is open, we encourage applications from individuals whose expertise complements existing department strengths in metamorphic petrology and tectonics, paleontology, sedimentology and structural geology. A Ph.D. is required at the time of appointment.

Applications should include curriculum vitae, a description of teaching philosophy and experience, and letters from at least three professional references. Send the applications to: Lab Coordinator Search, Professor M. L. Crawford, Department of Geology, Bryn Mawr College, 101 N. Merion Ave., Bryn Mawr, PA 19010-2899. Review of applications will begin Sept. 1, and the position will remain open until filled. E-mail applications are also accepted—mail to [mcrawfor@brynmawr.edu](mailto:mcrawfor@brynmawr.edu).

Bryn Mawr College is a liberal arts college for women with coeducational graduate programs in sciences, some humanities and social work. The College provides a rigorous education in the context of a diverse and pluralistic scholarly community and participates in consortial programs with the University of Pennsylvania, Haverford and Swarthmore Colleges. Bryn Mawr College is an equal opportunity, affirmative action employer. Members of underrepresented groups are especially encouraged to apply. For more information about the position, the Department and the College, visit [www.brynmawr.edu/Acads/Geo](http://www.brynmawr.edu/Acads/Geo).

### CENTRAL MICHIGAN UNIVERSITY MINERALOGY/PETROLOGY

#### ASSISTANT PROFESSOR TENURE-TRACK POSITION

The Department of Geology invites applications for an entry-level tenure-track position beginning in August 2001. We seek a person with the following qualifications: 1) Ph.D. in geology with a specialty in mineralogy or petrology, 2) demonstrated excellence in teaching is preferred, 3) commitment to field-based studies, 4) demonstrated commitment to high-quality undergraduate research, 5)

excellent communication skills. The successful applicant will be required to 1) teach mineralogy, introductory geology, and courses in his or her specialty, 2) develop a successful research program, and 3) develop and submit external grant proposals.

The Department of Geology currently has eight full-time faculty and 40 to 60 undergraduate majors. Teaching loads will range from 9 to 12 contact hours per 15-week semester. The department has a strong record of incorporating research into the undergraduate curriculum. For more information, visit our departmental web site at [www.cst.cmich.edu/units/gel/](http://www.cst.cmich.edu/units/gel/).

Central Michigan University enrolls approximately 18,000 students (87% undergraduate), and is located in the heart of the Michigan Basin. The department has modern and well-equipped facilities which include: automated ARL-SEMQ electron microprobe, Phillips XRD, VG-PQ2 ICP-MS, fluid inclusion lab, rock and mineral sample preparation facilities, a networked IBM and Mac computer lab, geophysical instruments, in-house GIS, access to other modern GIS and GPS systems, and two departmental vans. In addition, the department has access to other computing and analytical facilities on campus and at nearby universities.

Interested persons should send: 1) a resume, 2) statements of teaching philosophy, research interests, and vision for undergraduate education, 3) unofficial transcripts, and 4) three letters of reference to: Mineralogist/Petrologist Search Committee, Department of Geology, Central Michigan University, Mt. Pleasant, MI 48859.

All applications and materials must be received by October 6, 2000.

CMU, an AA/EQ institution, is strongly and actively committed to increasing diversity and providing equal opportunity within its community. CMU does not discriminate in employment against any person based on age, color, disability, gender, familial status, height, marital status, national origin, political persuasion, race, religion, sexual orientation, veteran status, or weight (see [www.cmich.edu/aaeo.html](http://www.cmich.edu/aaeo.html)).

#### GEOLOGIST/HYDROGEOLOGIST

##### OGDEN ENVIRONMENTAL AND ENERGY SERVICES

Ogden Environmental and Energy Services has the need for geologists/hydrogeologists in our San Rafael office. MS geology/hydrogeology, CA registered geologist/hydrogeologist, 8-10 yrs professional exp. in groundwater evaluations, site investigations, site remediation & project mgmt required. Prefer candidates with govt & commercial client exp. Please send resume to OEEES, 980 Lincoln Avenue, Ste. 200, San Rafael, CA 94901; fax (415) 454-1001 or [human\\_resources@oees.com](mailto:human_resources@oees.com). EOE/AA.

#### ASSISTANT PROFESSOR

##### SOUTHERN METHODIST UNIVERSITY

The Department of Geological Sciences at Southern Methodist University invites applications for a tenure-track faculty position in the broad areas of surficial processes or geodynamics. We seek creative applicants with an excellent understanding of fundamental physical principles and processes, and a demonstrated ability to apply that understanding in a quantitative manner to important problems in the earth sciences. The department seeks an individual who will complement existing strengths in one or more of the following areas: geochemistry, petrology/tectonics, geophysics, planetary dynamics, terrestrial paleoecology. We anticipate making the appointment at the assistant professor level with the appointment to begin no later than Fall, 2001. Applicants are required to have a PhD by the beginning of the Fall 2001 semester. The successful candidate will be expected to teach at the undergraduate and graduate levels, supervise graduate research, and establish an externally funded research program in his or her field of expertise. The committee will begin its review of the applications on or about November 1, 2000. To ensure full consideration, the application should be postmarked by November 1, 2000. Candidates should submit their curriculum vitae, names and addresses of three references, and a written statement of teaching and research interests to: Dr. Lee McAlester, Chair, Department of Geological Sciences, P.O. Box 0395, Southern Methodist University, Dallas, Texas 75275-0395. Email: [geol@mail.smu.edu](mailto:geol@mail.smu.edu) and website: [www.geology.smu.edu](http://www.geology.smu.edu). SMU is an Affirmative Action/Equal Opportunity/Title IX Employer.

#### UNIVERSITY OF CANTERBURY LECTURER/SENIOR LECTURER IN GEOLOGICAL SCIENCES

Applications are invited for a continuing (tenured) full-time position as LECTURER or SENIOR LECTURER in the DEPARTMENT OF GEOLOGICAL SCIENCES. We wish

to recruit a geoscientist with the potential to develop an innovative research programme on the sedimentary record using modern quantitative methods. Development of South Pacific regional geologic interests, either onshore or offshore, and a strong commitment to fieldwork is expected. Applicants should hold a Ph.D. degree or equivalent in an appropriate discipline and have postdoctoral research experience. A commitment to high quality teaching at undergraduate and graduate level, and a willingness to contribute to field courses will be required. The appointee will also be expected to conduct research, to obtain external research funding and to supervise post-graduate students at the M.Sc. and Ph.D. levels.

The University's World Wide Web address is [www.canterbury.ac.nz](http://www.canterbury.ac.nz). Academic enquiries only may be made to Professor J.W. Cole, fax 64-3-3642-769 or e-mail: [j.cole@geol.canterbury.ac.nz](mailto:j.cole@geol.canterbury.ac.nz).

Appointment enquiries should be made to [hr@regy.canterbury.ac.nz](mailto:hr@regy.canterbury.ac.nz).

Applications, quoting Position No GS126, close on 30 September 2000 with the Human Resources Manager, University of Canterbury, Private Bag 4800, Christchurch, New Zealand.

The University has a policy of equality of opportunity in employment.

#### FACULTY POSITION IN BIOGEOSCIENCE DEPARTMENT OF GEOLOGY

##### UNIVERSITY OF MARYLAND, COLLEGE PARK

The Department of Geology at UM is searching for a tenure-track faculty member who has made fundamental contributions in biogeoscience. We seek an outstanding scientist with research interests in the interdisciplinary field of geomicrobiology/mineralogy, or a closely related field. Research strengths in the Department of Geology are in the broad areas of mineralogy, petrology and geochemistry, in particular, crustal evolution and granites and associated mineralization; structural geology and tectonics; hydrological processes and integration of geomorphology, hydrology and ecology to understand surface environments; and, isotope geochemistry in support of these areas, and in mantle geochemistry, meteoritics, geochronology, carbonate diagenesis, sediment cycling, stratigraphy and paleoclimate studies. The Department of Geology encourages interdisciplinary approaches to the study of the Earth and participates in the Earth System Science Interdisciplinary Center, which is a new Center formed by the University of Maryland and NASA/Goddard Space Flight Center to advance fundamental knowledge about the earth system through preeminent research and teaching programs.

The Department expects to fill this position by Summer 2001. Salary will be commensurate with experience. The appointee is expected to develop and maintain an active, externally-funded research program, to direct graduate students, and to participate fully in teaching at the graduate and undergraduate levels, including courses in the introductory non-major program.

The University of Maryland is an affirmative action/equal employment opportunity employer. Applications should be submitted by September 29, 2000, for best consideration, and should be submitted to: Chair, Search Committee, Department of Geology, University of Maryland, College Park, MD 20742, USA (electronic submissions to: [geology@geol.umd.edu](mailto:geology@geol.umd.edu)). Persons interested in being considered for this position should provide a statement describing research and teaching interests, indicating how s/he envisions contributing to the Department's research and teaching activities, and a current curriculum vitae. Applicants should arrange to have a minimum of four letters of recommendation sent directly to the Chair of the Search Committee before September 29, 2000. The Search Committee encourages applicants to submit copies of up to two recent publications in support of their candidacy.

## Services & Supplies

**OLD STOCK & BOND CERTIFICATES WANTED!** Buy & sell all topics especially mining. Contact Norrico, Box 660077, Flushing, NY 11366; (718) 380-4009; [norrico@compuserve.com](mailto:norrico@compuserve.com).

**RECENT, RARE, AND OUT-OF-PRINT BOOKS.** Find our on-line catalog at [home.earthlink.net/~msbooks](http://home.earthlink.net/~msbooks) for books on Geology, Mining History, USGS, and Western Americana; e-mail: [msbooks@earthlink.net](mailto:msbooks@earthlink.net). For free printed catalogs send your request and area(s) of interest to MS Book and Mineral Company, P.O. Box 6774, Lake Charles, LA 70606-6774.


*Seismo-Watch*

Your Source For Earthquake News and Information

**The keys to safely living in earthquake prone areas are understanding earth processes and being prepared in case of a major event.**

**Knowing what to do can save TIME, MONEY and even your LIFE!**

**Seismo says...!**



**Teach your children the escape routes.**

Visit: <http://www.seismo-watch.com>  
Now featuring premium earthquake alert bulletins.

**BOOKS:** Geology, Paleontology, History of Geology. Used, out-of-print, and rare. Free catalog. Patricia L. Daniel, BS, MS, Geology. 618 W. Maple, Independence, KS 67301, ph: (316) 331-0725, fax: (316) 331-0785, email: [pldaniel@horizon.hit.net](mailto:pldaniel@horizon.hit.net), website: <http://users.hit.net/~pldaniel>.

## Opportunities for Students

**Graduate Student Support Opportunities in Earth Sciences, Lehigh University**—The Department of Earth and Environmental Sciences of Lehigh University has Graduate Student Fellowships for highly qualified individuals. The department has active research programs in tectonic studies (geochronology, stable-isotope geochemistry, low-temperature geochemistry, seismology, high-resolution geophysics, structural geology, paleomagnetism) and surficial processes (low-temperature geochemistry, fluvial and tectonic geomorphology, glacial geology, hydrology, and limnology). Please contact Prof. D. Morris, Dept. of Earth and Environmental Sciences ([dpm2@lehigh.edu](mailto:dpm2@lehigh.edu)) or see our Web page for more details ([www.ees.lehigh.edu](http://www.ees.lehigh.edu)).

**Graduate Study in Marine Sedimentology.** The LSU Department of Oceanography and Coastal Sciences is seeking applicants for graduate study in marine sedimentology. Potential research topics include sedimentology of modern deltas, radioisotope geochronology of recent deposits, and impacts of combined event sedimentation and bioturbation on the sediment record. We are seeking a highly qualified individual with demonstrated capacity for independent work. Qualified applicants will be considered for a 4-year fellowship of \$16,000 per year. Additional funding will be sought for additional years. Students seeking either the PhD or MS/PhD in geological oceanography should apply by completing and submitting the graduate program preapplication (found at [www.oceanography.lsu.edu/application.html](http://www.oceanography.lsu.edu/application.html)) for a start date as soon as August 2000. For questions or to request a mailed preapplication, contact Dr. Larry Rouse, Graduate Advisor, ([lrouse@lsu.edu](mailto:lrouse@lsu.edu), 225-388-2953) or Dr. Sam Bentley ([sjb@lsu.edu](mailto:sjb@lsu.edu), 225-388-2954), Coastal Studies Institute, Howe-Russell Geosciences Complex, Louisiana State University, Baton Rouge, Louisiana 70803, USA. ■

# GSA Annual Meeting and Exposition



## Summit ▲ 2000



*It's a sure bet, with*

- *great rates*
- *great science*
- *great times*

**SUBARU** 

Brought to you through the generosity  
of Subaru of America, Inc.

For housing details, technical program listing, and information on Reno and Lake Tahoe area attractions, visit [www.geosociety.org](http://www.geosociety.org).

(303) 447-2020 • (800) 472-1988  
e-mail [meetings@geosociety.org](mailto:meetings@geosociety.org)

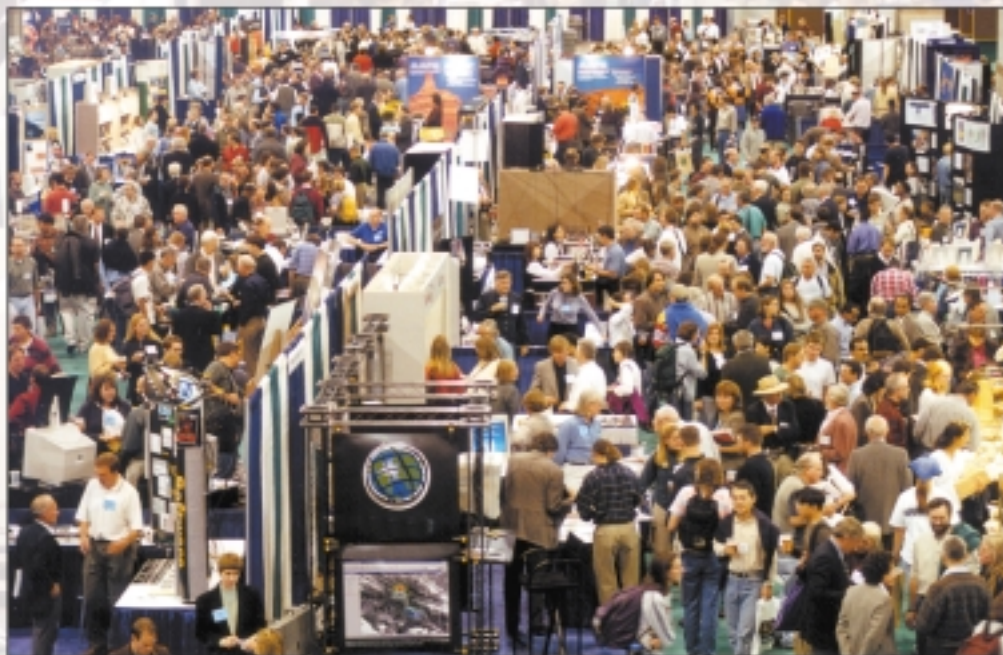
**Reno, Nevada**

**November 9–18, 2000**

## Can your company afford to neglect 6,500+ potential customers?



If not, then you need to exhibit at the Geological Society of America's Annual Meeting and Exposition at the Reno/Sparks Convention Center in Reno, Nevada, November 12–15, 2000.



The GSA Annual Meeting is the meeting of choice of geoscience professionals whose interests are the Earth, education, science, research, and the environment. Take advantage of this high-traffic exposure to develop new customers, increase sales, and educate current customers about your organization's benefits.

The Exhibitor Prospectus is available online at: [www.geosociety.org/meetings/2000](http://www.geosociety.org/meetings/2000).

For more information, contact GSA Exhibit Sales Coordinator Brenda Martinez at (303) 447-2020, ext. 138, or [bmartinez@geosociety.org](mailto:bmartinez@geosociety.org).