

Annual Report fy2016



Table of Contents

1	Letter from the GSA President
3	GSA Fiscal Year 2016 Officers & Councilors
4	Letter from the GSA Executive Director
5	GSA Membership
7	Publications
8	Meetings
9	Thank You Sponsors
10	Education & Outreach
12	STEPPE
14	Government Affairs & Public Policy
16	GSA Foundation
17	GSA Operations Report
18	GSA/GSAF Combined Investment Portfolio Report
20	GSA's Associated Societies
21	Stewardship at GSA Headquarters



Photo by Daan Vanhove



Jonathan G. Price

GSA's mission is to advance geoscience research and discovery, service to society, stewardship of Earth, and the geosciences profession. Our vision is to be the premier geological society supporting the global community in scientific discovery, communication, and application of geoscience knowledge.

We complete this mission largely through our scientific publications; meetings (including field trips and short courses); education & outreach efforts directed toward the public, educators, and policymakers; and special programs (including research and travel grants for students). Revenues from our publications and meetings help support other worthy efforts of GSA. With the advent of open access (journal articles available free to the public), GSA's business model is changing. We will no longer be able to rely as heavily on revenues from publications to support other good causes. This may force us to cut costs, reduce programs, and find new sources of revenue.

Vicki McConnell, GSA's Executive Director, is working with GSA staff to increase efficiencies and cut costs in our headquarters operations. Vicki has chosen to not fill some vacancies and has realigned staff to keep programs running smoothly. Throughout the year, we had opportunities to make recommendations on both major and minor changes in GSA directions and operations. At the GSA Executive Committee retreat over a weekend in late August in Boulder, we began the process of revising GSA's strategic plan by brainstorming ideas for GSA to better accomplish its mission. We reported key recommendations from the retreat at the GSA Council meeting in late October 2015 in Baltimore, and both staff and GSA member-volunteers have taken action on many of those recommendations.

Margaret Eggers, Chair of the Board of Trustees, and Jack Hess, Foundation President, currently head the GSA Foundation, whose endowments currently cover many programs, including research and travel grants for students, GSA's international lectureships, and GSA medals and awards. Efforts are underway within the Foundation to increase support for GSA's government affairs program and for improving our communication to the public through a media intern.

The Programmatic Overview Committee (POC) meets annually to review one of the four major aspects of GSA's operations: meetings, publications, education and outreach, and the Office of the Executive Director. Each is reviewed at least once every five years. In late January, this year's POC covered the Office of the Executive Director, including governance and administration, international efforts, government affairs, financial services, membership, grants and awards, communication and marketing, sales and service, and information technology. The POC's recommendations were presented for Council's review and approval at the spring Council meeting in Boulder.

Council received recommendations from several standing and ad hoc committees during its spring meeting. In particular, we received reports from the following:

- Student Advisory Council
- Meeting of the leadership of GSA Divisions
- Meeting of the secretaries of GSA Sections
- GSA International
- Ad Hoc Committee on Divisions and Interdisciplinary Interest Groups
- Ad Hoc Committee on the Nominations Process for GSA Committees, Councilors, and Officers
- Ad Hoc Committee on the Nomination Process for GSA Awards and Honors
- Ad Hoc Committee on Diversity
- Ad Hoc Committee on Town Hall meetings.

Council endorsed or slightly modified most of the recommendations in these reports. The short story is that GSA staff and volunteers are working hard to improve processes and let everyone know the benefits of GSA membership. We're improving operational efficiencies, both at headquarters and in our committees of member-volunteers. We're making our meetings, field trips, and the geoscience professions more attractive to a diverse community. We're engaging students more heavily in governance. As a major step in fulfilling our mission and striving toward our vision, we're moving prudently toward open access of GSA journals.

In the May 2015 issue of *GSA Today*, Council announced its commitment to making GSA journals (*Geology*, *Geosphere*, *Lithosphere*, and *GSA Bulletin*) open access in a phased manner,

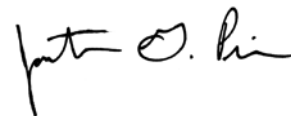
with the hope of beginning with *Geology* in 2017. The spring Council meeting was scheduled to be a decision point on whether to implement the plan in 2017 or wait, given various budget uncertainties. After careful deliberations, Council voted to delay free access to *Geology* for the public and the worldwide geologic community, but to provide free access to *Geology* for all GSA members beginning in 2017. This is a significant, new membership benefit. The decision is also intended as a prudent approach to initiating full open access for GSA journals in the future.

Authors of *Geology* articles will still be able to have their papers made openly accessible to the public immediately upon publication by paying the article processing charge (APC) of \$2,500 for non-members or \$2,400 for GSA members. Color-figure charges will no longer be needed, but authors will be asked to cover a publication fee of \$1,750. The GSA Foundation is seeking endowment funds to cover the APC for those who cannot pay (e.g., authors from countries and institutions unable to afford it), and no article will be rejected for an inability to pay. Also, a print option will still be available in 2017 for those members and institutional subscribers who are willing to cover the added costs of printing and shipping.

The quality of *Geology* and other GSA journals will remain among the highest in the geosciences by retaining rigorous peer review and editing. The impact factor of *Geology* has been consistently high, and it should increase as open access makes the articles easy for the global scientific community to read and cite.

It has been an honor and delight to volunteer for service with GSA. The GSA staff superbly assists hundreds of GSA member-volunteers (journal-article reviewers, editors, authors, technical session organizers, oral and poster presenters, field-trip leaders, short-course instructors, Division and Section leaders, and members of ad hoc and standing committees) who make our meetings and publications outstanding. Thank you all!

Jon Price, *GSA President*




SCIENCE ■ STEWARDSHIP ■ SERVICE

GSA FY2016 OFFICERS



PRESIDENT
Jonathan G. Price
Jonathan G. Price LLC
Reno, Nevada, USA



VICE PRESIDENT/PRESIDENT-ELECT
Claudia I. Mora
Los Alamos National Laboratory
Los Alamos, New Mexico, USA



TREASURER
Bruce R. Clark
The Leighton Group Inc.
Corona Del Mar, California, USA



PAST PRESIDENT
Harry Y. McSweeney, Jr.
University of Tennessee
Knoxville, Tennessee, USA

GSA FY2016 COUNCILORS

Term: July 2012–June 2016



Isabel P. Montanez
The University of California at Davis
Davis, California, USA

Term: July 2013–June 2017



Elizabeth J. Catlos
The University of Texas at Austin
Austin, Texas, USA

Term: July 2014–June 2018



Timothy J. Bralower
Pennsylvania State University
University Park, Pennsylvania, USA

NEWLY ELECTED
Term: July 2015–June 2019



Frank J. Pazzaglia
Lehigh University
Bethlehem, Pennsylvania, USA



Marilyn J. Suiter
Arlington, Virginia, USA



John J. Clague
Simon Fraser University
Burnaby, British Columbia,
Canada



Anke Friedrich
Ludwig Maximilian University
of Munich
München, Germany



Christopher (Chuck) M. Bailey
College of William & Mary
Williamsburg, Virginia, USA



William W. Simpkins
Iowa State University
Ames, Iowa, USA



Neil Fishman
Hess Corporation
Houston, Texas, USA



Stephen G. Pollock
University of Southern Maine
Gorham, Maine, USA



Mary J. Kraus
University of Colorado—Boulder
Boulder, Colorado, USA



Vicki S. McConnell

Dear GSA Members and Staff,

I am pleased to submit this annual report to you outlining the activities and operations of GSA over fiscal year 2016 (FY16) and giving you a glimpse into the future of GSA. The letter from GSA President Jon Price offers an excellent overview of the activities of GSA leadership over the same time frame and some highlights of the Society. The bulk of this annual report has been penned by those who are leading GSA's work, the GSA directors and program managers, and gives more detail on the many activities of programs, publications, and events. I have a few things I wish to highlight in this letter.

The last of 2015 and the beginning of 2016 defined a surprising year—one full of impacts that echo global actions but affect GSA very locally. Probably first and foremost to membership and all geoscientists has been the dramatic downturn in energy minerals, oil/gas, and the mining industry. This downturn has affected the geoscience workforce, academia, students, government programs, and professional societies such as GSA. Our membership is relatively flat for the first time in over a decade. We remain at 26,767 members as of December 2015. I interpret this change in the membership rate as a temporary phenomenon associated with the downturn. It does mean we at GSA should be carefully taking the pulse of our members and making sure we are providing what they want of their premier professional society. The question of the day, now and into the near future, is “If GSA originated today, what would it look like?” I welcome your comments and suggestions addressing that question.

Regardless of outside influences we continue our primary functions—meetings, publications, stewardship, advocating for the geosciences, and education programs. We made some organizational changes at GSA Headquarters in FY16 with the goal of integrating programs across those functions. We no longer have a separate education and outreach directorate. Instead the programs are aligned with meetings, communication, and careers as appropriate. We took a hard look at all our expenses, both personnel and operational. All the GSA directorates identified ways to help with our bottom line. We completed the fiscal year without requirements to access strategic funds. This is advantageous as we continue to plan for the changes to our operations that will occur as we implement gold open access of the GSA journals.

GSA programs and publications remain strong and leaders in the geosciences world. GeoCorps America placed dozens of students in National Forests, BLM regions, and the National Park Service Geologists-in-the-Parks program. Our 2015 Annual Meeting and Exposition in Baltimore, Maryland, was well attended, featured policy leaders from the Beltway, and honored the history of geology by recognizing William Smith's work and map. Our Section Meetings and field trips remain popular, especially with students. We have expanded our GeoCareers programs to include identifying what early career professionals need to jumpstart their careers. We continue to celebrate and honor those among us that have achieved both early and late career milestones through our Fellowships and awards.

We did modestly increase annual dues this year (e.g., professional members' dues went to \$90) after a review of historical dues increases over time. It is not the intention of GSA leadership to put the entire burden of operating GSA on members. We are mindful of expenses and are realistic about how we generate and invest any revenue. We intend to provide the benefits and services that are the privilege of being a GSA member at a fair and equitable cost. Because of this, GSA Council decided to delay implementation of full open access of *Geology* in 2017 to give us an extra year to plan for the changes. This means an added member benefit in 2017 for all GSA members as a subscription to online *Geology* will be included in your new or renewed membership.

Whatever your primary reason for being in the GSA community—sharing your science, networking with your colleagues, meeting students and guiding the future of geosciences, or attending our stellar field camps or trips to stay at the top of your profession—we remain at your service. I encourage you to share your thoughts and suggestions about “What is GSA” with me or with any of your GSA leaders. The mission of GSA is not likely to change, but how we achieve that mission will as our society and world evolve. GSA's lofty goals are designed to further the scope and impact of the geosciences and make your professional life easier. Please take a moment to review this annual report of our work for you in FY16 and let us know what you would like for the future.

I want to personally acknowledge all the GSA staff who dedicate their formidable talents, energy, and interest to GSA every day.

Vicki S. McConnell, *Executive Director*



Where Geology & People Come Together



GSA's 26,767 members comprise a diverse community of professional geologists, early career professionals, students, K–12 teachers, and affiliates from the education, industry, and government sectors. GSA members represent more than 27 scientific specialties and interests, and have the option to belong to one or more of GSA's 18 Divisions, two Interdisciplinary Interest Groups, and six regional Sections.

SUPPORTING EARLY CAREER PROFESSIONALS AND GEOSCIENCE STUDENTS

It has been GSA's history and long-term goal to support geoscience students and early career professionals in their pursuit of careers in the geosciences by offering programs to aid in their success, and providing benefits designed specifically around their needs.

Student and early career professional members continue to enjoy reduced GSA membership and Division dues, reduced GSA meeting registration, free online access to GSA's journals, and access to GSA's GeoCareers programs, along with other membership offerings. GSA student members, who represent 35% of GSA's membership, not only benefit from the aforementioned, they also receive one free Division membership of choice, and may be eligible for travel and research grants.

In support of geoscience students, 505 professional members in 36 countries serve as Campus Representatives by advocating for the Society and encouraging their students to be involved by taking advantage of programs and services offered through membership.

One of the most successful student programs is the GSA Graduate Student Research Grants Program—one of the largest and most prestigious funding programs for graduate students in the geosciences. The program helps fund field and laboratory costs of geoscience projects proposed and conducted by master's and doctoral student members at universities in the United States, Canada, Mexico, and Central America. Throughout its more than 80-year history, the GSA Research Grants Program has awarded ~11,000 geoscientists more than US\$15,000,000 to conduct research. For FY2016, 699 students applied for funding and 359 were awarded a grant (51%). The total amount of money granted was US\$731,738. The average grant amount awarded in 2016 was US\$2038.

GSA INTERNATIONAL INITIATIVES

GSA remains active within the international geoscience community in the belief that "science knows no borders." The GSA worldwide member community spans 111 countries with 2185 members residing outside of North America, mostly in the United Kingdom, Australia, Japan, Germany, and China.

The **Geological Society of America Thompson International Distinguished Lecturer** is a prestigious lecture tour named after the internationally known former Harvard Professor James B. Thompson Jr., whose bequest to GSA contributed to the endowment of a dual lecture tour—one leg by a non–North American scientist within North America, and a parallel tour by a North American scientist outside of North America.

GSA International's 2015 awardees were Lisa L. Ely, Ph.D., Central Washington University, Ellensburg, Washington, USA; and Stefano Lugli, Ph.D., University of Modena e Reggio Emilia, Italy.



*Lisa L. Ely, Ph.D.,
Central Washington University, USA.*

Dr. Ely presented exciting and cutting-edge geoscience research in a tour of foreign universities and geological institutions that included South American universities in Chile, Ecuador, and Peru in November 2015; and a second tour to Mexico, Central America, and the Caribbean in April and May 2016.



*Stefano Lugli, Ph.D., University of
Modena e Reggio Emilia, Italy.*

Professor Lugli presented seminars of broad geologic interest in a tour of selected academic and related institutions within North America including northeastern universities in the month of November 2015; and Pacific northwestern universities during the months of April and May 2016.



2015 INTERNATIONAL HONORARY FELLOWS

Manfred Strecker, distinguished professor at the Universität Potsdam, Institut für Erd- und Umweltwissenschaften, Germany



Brian Windley, professor of tectonics, Leicester University, UK.

International initiatives also included awarding a total of US\$8000 for international travel grants for students, young professionals, and invited speakers to attend the 2015 Annual Meeting in Baltimore, which included a special session on the 2015 Nepal (Gorkha) earthquake and the “Bridging Two Continents” reciprocal meeting with the Geological Society of China.

Other activities include partnerships with GSA’s international Associated Societies (*see listing*); joint international meetings; and representation on international committees, commissions, and projects.

AWARDING EXCELLENCE IN THE GEOSCIENCES

In support of our mission to advance the geoscience profession, GSA honors outstanding scientific achievement each year at the GSA awards ceremony held during the Annual Meeting. The three highest awards are the prestigious Penrose Medal, the Arthur L. Day Medal, and the Young Scientist Award (Donath Medal).

Other notable awards include:

President’s Medal of the Geological Society of America
 Outstanding Woman in Science Award
 Randolph W. “Bill” and Cecile T. Bromery Award for Minorities
 AGI Medal in Memory of Ian Campbell
 John C. Frye Award
 GSA Distinguished Service Award
 GSA Division Awards
 GSA Fellowship
 Honorary Fellows
 GSA Geologic Mapping Award in Honor of Florence Bascom
 GSA Public Service Award

Associated Societies Outside of North America:

Asociación Geológica Argentina (AGA)
 European Association of Geoscientists & Engineers (EAGE)
 European Geosciences Union (EGU)
 Geologica Belgica (GB)
 Geological Society of Africa (GSAf)
 Geological Society of Australia (GSAus)
 Geological Society of China (GSC)
 Geological Society of London (GSL)
 Geological Society of South Africa (GSSA)
 Geologische Vereinigung (GV)
 Geoscience Society of New Zealand (GSNZ)
 Israel Geological Society (IGS)
 Nepal Geological Society (NGS)
 Sociedad Geológica Mexicana, A.C. (SGM)
 Società Geologica Italiana (SGI)

Special Interest International Societies:

Association of Geoscientists for International Development (AGID)
 Blueprint Earth (BE)
 International Association for Geoscience Diversity (IAGD)
 International Association for Promoting Geoethics (IAPG)
 International Association of Emergency Managers (IAEM)
 International Association of GeoChemistry (IAGC)
 International Association of Hydrogeologists (IAH)
 International Medical Geology Association (IMGGA)
 International Society for Aeolian Research (ISAR)
 The Mineralogical Society (MS)
 Society for Environmental Geochemistry & Health (SEGH)
 Society of Exploration Geophysicists (SEG)

“ Discover, Communicate, Connect ”

JOURNALS

GSA publications continue to evolve in the ever-changing world of scientific publishing. GSA Council stepped back temporarily from its October 2014 resolution to begin the transition to 100 percent open access for GSA journals in 2017, but *Geology* will be freely accessible online to all GSA members as of January 2017. GSA Council remains committed to making all GSA journals 100 percent open access in the future, with this new member benefit as a step in that direction.

The peer-reviewed journals *Geology*, *Geosphere*, *Lithosphere*, and *GSA Bulletin* are published at www.gsapubs.org, through the aggregate GeoScienceWorld (www.geoscienceworld.org), and on an annual DVD. All four publish accepted articles online as soon as they are ready (ahead-of-issue).

- *GSA Bulletin*, published since 1890, is distributed in print and online bimonthly, with online archives now back to volume 1. 2016 impact factor*: 4.332; five-year: 4.730.
- *Geology's* short papers on new investigations and provocative topics from all earth science disciplines are published monthly online and in print, with online archives back to volume 1 (1973). *Geology* ranks as the #1 geology journal for the tenth year in a row*. 2016 impact factor*: 4.548; five-year: 4.813.
- *Geosphere*, which publishes issues bimonthly online, covers all geoscience disciplines and features papers with animations, sound, and movie files, as well as collections of themed issues. 2016 impact factor*: 2.262; five-year: 2.573.
- *Lithosphere*, distributed online and in print bimonthly, provides an outlet for the high interest in tectonics and structural geology and ranks as the #5 geology journal*. 2016 impact factor*: 2.618; five-year: 2.858.

GSA Today, GSA's science and news magazine for members and the earth-science community worldwide, features peer-reviewed science articles as well as member news and announcements. It is open access online at www.geosociety.org/gsatoday.

Published jointly by the Association of Environmental and Engineering Geologists and GSA is the quarterly *Environmental & Engineering Geoscience*. Online at GeoScienceWorld, it contains new theory, applications, and case histories illustrating the

dynamics of environmental and applied disciplines. 2016 impact factor*: 0.500; five-year: 0.760.

BOOKS AND MAPS

GSA published 12 peer-reviewed scholarly books in fiscal year 2016. The Special Paper series (ten volumes in FY16) is for state-of-the-art treatments of evolving subjects, while Memoirs are intended to remain authoritative references for a number of years. Field Guides (two volumes in FY16) feature guides from field trips held at GSA and other meetings. Reviews in Engineering Geology is produced in cooperation with GSA's Environmental & Engineering Geology Division, and GSA also publishes print and digital maps. The Publications Department produces an annual calendar and publishes *Memorials* to deceased GSA members (eight published in FY16). *Memorials* back to volume 1 are available at www.geosociety.org.

GSA's e-book collection (www.gsapubs.org) includes Special Papers, Field Guides, Memoirs, and Reviews in Engineering Geology volumes in PDF back to volume 1 from each series. Individual papers from volumes in progress are now posted "Online First" as they are ready. Also online is the complete suite of Decade of North American Geology volumes and maps, available at GeoScienceWorld and at the GSA Store. Other digitized books available at GeoScienceWorld include the GSA Field Guide and Reviews in Engineering Geology volumes, Engineering Geology Case Histories, Penrose Field Guides, and numerous non-series books.

GEOFACETS

GSA continues its participation with Geofacets, a research tool primarily for exploration geoscientists that lets subscribers search and download thousands of georeferenced geological maps and other content (including about 80,000 maps from GSA publications).

GSA STORE

Along with providing a storefront for GSA books, maps, educational materials, and specialty tools, the GSA Store has made it possible to offer e-versions of hundreds of previously unavailable or out-of-print publications to researchers and citizen scientists alike.

AUTHORS OF THE FUTURE

An early-career publishing workshop was held for the third time at the GSA Annual Meeting in Baltimore. The workshop, led by GSA editors, covered many aspects of the process of preparing research for submission to scholarly journals, including the importance of contributing as a reviewer.

*2016 Thomson Reuters Journal Citation Reports. The JCR uses a systematic, objective means to evaluate a journal's impact based on how many citations its papers receive each year. Thomson Reuters also tracks GSA Special Papers, Memoirs, and Reviews in Engineering Geology volumes in its Book Citation Index.

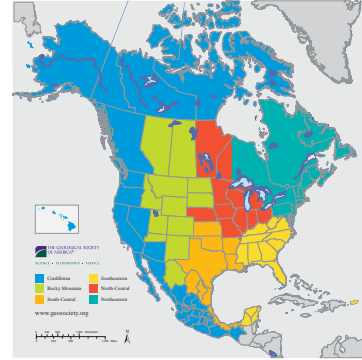
“ Connecting the Geoscience Community ”

The Geological Society of America offers a variety of meetings to geoscientists; from small research forums, to moderate specialty conferences, to a large annual meeting. These forums, conferences, and meetings are held around the globe throughout the year. GSA provides a platform for scientists to provide their latest research, build upon current knowledge, and network with peers. GSA strives to keep our meetings cost-effective, yet provide the latest technology platforms for scientists to utilize. In fiscal year 2016 (FY16), GSA hosted seven meetings and conferences, bringing together thousands of geoscience professionals and students.



The **GSA Annual Meeting and Exposition** was held in Baltimore, Maryland, in November 2015. Nearly 7400 attendees from 58 countries attended while presenting over 4700 abstracts over several days. Twenty-nine field trips ran and 15 short courses were held. A number of special activities occurred during the meeting. Celebratory sessions and events honored the 200th anniversary of the publication of the first modern geologic map of a large region—England, Wales, and portions of Scotland—by William Smith. GSA also welcomed colleagues and guests from the Geological Society of China in a “meeting within a meeting” concept. *Bridging Two Continents* was a continuation of joint efforts between the two societies in order to promote and encourage greater understanding of earth sciences.

Hundreds of volunteers participate yearly in the GSA Annual Meeting—From local organizing committee members and the Joint Technical Program Committee, to the hundreds of session conveners from every geoscience discipline and the hundreds of student volunteers from campuses across the Americas and abroad. There is something for everyone at the GSA Annual Meeting!



GSA Section Meetings are unique venues for interdisciplinary science and are an important hub for discussing and presenting current research. They provide an excellent opportunity for both professionals and students to attend and participate in technical sessions, field trips, and short courses close to home. The 2016 Section Meetings were held across the country bringing together nearly 3600 scientists. Meetings were held in Baton Rouge, Louisiana (GSA South-Central Section); Albany, New York (GSA Northeastern Section); Columbia, South Carolina (GSA Southeastern Section); Ontario, California (GSA Cordilleran Section); Champaign, Illinois (GSA North-Central Section); and Moscow, Idaho (GSA Rocky Mountain Section).



GSA’s Penrose Conferences were established in 1969 to bring together multidisciplinary groups of geoscientists and facilitate an open and frank discussion of ideas in an informal atmosphere, as well as to stimulate individual and collaborative research. **Thompson Field Forums** were established in 1998 and provide the opportunity for exchange of current knowledge and exciting ideas well expressed by the geology of a specific area. The intent of Thompson Field Forums is to stimulate and enhance individual and collaborative research and to accelerate the advance of the science by interactions in the field. No Penrose Conferences or Thompson Field Forums were held in FY16. While there are several planned for FY17 and beyond, more are welcome. If you have an idea and would like to look into convening a Penrose Conference or Thompson Field Forum, see the website (www.geosociety.org/meetings/penrose-thompson.htm) for more information. Initial funding may be available.

GSA’s Specialty Meetings may take place anywhere in the world. These meetings are typically co-hosted by other countries’ geological societies. Currently, *Geological Evolution of Africa: Making and Breaking of a Continent* is being planned for FY17 in Addis Ababa, Ethiopia, 13–17 March 2017 in conjunction with the Geological Society of Africa. This meeting will cover three major themes: the Archean Lithosphere, the Pan African Event, and the Great East African and Other Rift Systems of Africa.



Building New Corporate Relationships.

Thank you
Sponsors!



GSA and the Foundation are pleased to collaborate in a wide range of sponsorships supporting the Annual Meeting, and more: Field camps, teacher excellence recognition, geoscience students' field camp attendance, undergraduate diversity scholarships, and a number of in-kind services are all made possible thanks to partners and sponsors. We were pleased to offer the third year of the Geoscience Careers in Industry program, supported by a variety of sponsors. We aim to increase unique sponsorship opportunities that shed a spotlight on GSA and partners, even beyond our membership and regular supporters.

The combined efforts of business and science can make a greater difference than any organization alone. As GSA continues to convey its relevance to the private sector, we look forward to expanding corporate relationships in a variety of industries. Together, we can foster the growth of current and future leaders in the geoscience community, engaging business and industry as a positive force to advance science, stewardship, and service.

We thank the companies that join us in the meaningful impacts of partnership.

DOUBLE DIAMOND

ExxonMobil

ExxonMobil

GOLD



GOLD



SILVER

Newmont Mining Corporation



BRONZE

Association for Women Geoscientists

CONTRIBUTOR

CH2M*

Nature Communications

McCormick/World of Flavors*



Johns Hopkins University Dept. of
Earth & Planetary Sciences



GEOLOGICAL SOCIETY OF AMERICA
FOUNDATION

The GSA Foundation is proud to continue its work in support of GSA and its programs.

*denotes in-kind contribution

Thank You FY2016 Sponsors

“ Nurturing Current & Future Generations ”

Earth science education and outreach activities at all levels are at the core of GSA’s mission to increase appreciation of Earth’s history, processes, and resources.

EXPLORE CAREERS

The GeoCareers Program

GSA’s GeoCareers initiative provides events, activities, and workshops at GSA Section and Annual Meetings, aimed at increasing knowledge of career pathways for students studying in the geosciences. These activities are available to both students and early career professionals, and help them better understand the preparation needed for a successful career.

Annual Meeting

The GeoCareers in Industry events connect students with professionals in industry through a student poster session, a company information-sharing session, and an evening reception. A career workshop highlights ways for students to better market themselves to potential employers and features a panel of company representatives to discuss their company hiring processes. More than 130 people participated in these events at the 2015 annual meeting. The addition of a Résumé Clinic for students and early career professionals provided 28 participants feedback on their résumés.

Career Pathways panels (Geology in Industry, Geology in Government, and Women in Geology) highlight a variety of careers available to students and early career professionals and are driven by student questions. During the 2015 annual meeting, 630 students and early career professionals attended these events along with 19 mentors. Over the past 16 years, these programs have served more than 8700 students and over 300 mentors.

GSA’s On To the Future (OTF) program supports a diverse group of students traditionally underrepresented in the geosciences to attend their first GSA Annual Meeting. OTF supported 113 students to attend the 2015 annual meeting. A select group of 25 students was funded to attend the GSA and SACNAS (Society for the Advancement of Chicanos/Hispanics and Native Americans in Science) annual conferences supported by a grant from the National Science Foundation. To date, OTF has provided travel awards, membership, mentors, and meeting registration to 350 students nationwide. OTF students include 51 percent from first generation backgrounds, meaning they are the first in their families to attend college, and 81 percent come from underrepresented minority backgrounds.

Section Meetings

The Roy J. Shlemmon Mentor Program in Applied Geoscience and the John Mann Mentors in Applied Hydrogeology luncheons are short-term mentoring events that connect students and early career professionals with practicing geologists and hydrogeologists. These luncheons are held at each of GSA’s section meetings. Combined over the past year, these events reached 639 students and early career professionals and 81 mentors. An increased contribution by the Northeastern Section helped the Shlemmon Program thrive. In addition to these mentor luncheons, three workshops focused on career development ran at each section meeting. Topics included career planning, career exploration, and cover letter and résumé writing. More than 250 students participated in these workshops.



Chelsea Jones, Oregon Caves National Monument.

FIELD AND RESEARCH EXPERIENCES

GeoCorps™ America and NPS Geoscientists-in-the-Parks (GIP)

GeoCorps™ America has gone through many changes this year. GSA continues its partnerships with the Bureau of Land Management (BLM) and the U.S. Forest Service, filling 61 GeoCorps projects in 2015, and an estimated 52 GeoCorps projects in 2016. With the National Park Service, GSA’s partnership now exists under the NPS “Geoscientists-in-the-Parks” (GIP) program. In 2015, GSA recruited for 120 GIP projects, with an estimated 95 GIP projects in 2016. For the GeoCorps program, GSA recruits participants for projects with the BLM and U.S. Forest Service, while GSA’s new staffing partner, Aerotek, enrolls the participants as its employees. For the NPS GIP program, GSA recruits the participants, and another NPS partner, Environmental Stewards, enrolls the participants into the AmeriCorps program. Although the program and cost model has changed significantly, interest from federal agencies remains high, and GSA is optimistic that a GeoCorps partnership with the USGS will come to fruition for the next fiscal year.

At the 2015 GSA Annual Meeting, 19 participants from GeoCorps and GIP presented their projects in GeoCorps/GIP sessions, and 11 more presented their projects in other sessions. For more details on GeoCorps, see the 2015 GeoCorps Annual Report: <http://bit.ly/29Bbrxb>.

GSA/ExxonMobil Field Camp Programs

With continued support from ExxonMobil, GSA is able to offer a variety of field awards to geology students and faculty. The GSA/ExxonMobil Bighorn Basin Field Award offers awardees an introduction to integrated basin and petroleum systems analysis and is taught by ExxonMobil staff. In August 2015, there were four faculty, six graduate students, and 15 undergraduate awardees.

The GSA/ExxonMobil Field Camp Scholar Award is a \$2000 award to students to attend a geology field camp of their choice. In the summer of 2015, a total of 20 students were awarded based on their economic and financial need, merit, and diversity.

The GSA/ExxonMobil Field Camp Excellence Award is provided to a geology field camp based on safety awareness, diversity and technical excellence. In June 2016, the \$10,000 award went to the Santa Barbara City College Summer Field Camp.

The EarthCache™ Program

The EarthCache™ program, an educational geocaching project that takes the general public to over 20,000 interesting Earth science sites, has continued to grow this year. More than 6 million people have logged visits to EarthCache sites since its inception. On 11 October 2015, over 36,300 people earned their International EarthCache Day souvenir by finding an EarthCache. The Fourth International EarthCache Mega Event took place in September 2015 in the Harz Mountains, at Goslar, Germany. Over 1400 people from around the world attended, and plans for the fifth event, which will be held in Denver, Colorado, in conjunction with the 2016 GSA Annual Meeting, are well underway, as part of GSA's effort to engage more members in EarthCaching.

PROFESSIONAL DEVELOPMENT

The GeoTeachers Program

The goal for the GeoTeachers Program, formerly known as the Teacher Advocate Program (TAP), is to provide professional development via workshops and field experiences for K–12 teachers with little to no geoscience background. This past year successful workshops were taught at the National Science Teachers' Association national conference. Forty-nine teachers attended the two workshops that were offered. Attendance remains high, although the workshop on rocks has been offered at least 20 times during the past five years. This highlights the great need teachers have for learning geoscience content and discovering effective ways to teach it.

It is necessary to serve teachers in between conferences and to provide additional workshops on various geoscience topics. In

order to meet this need, the GeoTeachers Program is exploring the idea of offering online professional development through the GeoClassroom. This would reach a greater audience of teachers and in the long run would be a more cost-effective way to provide professional development.

The Rocky Mountain and Acadia Field Camps (RMFC and AFC) for teachers ran this year. Eleven teachers (from eight states) attended the RMFC and 19 teachers (from ten states) attended the AFC. A total of 10 teachers were able to secure partial or full funding for the field camps and indicated that they would not have been able to attend the field camps without this funding. This is the fourth summer that Field Camps have been offered for teachers.

New partnerships continue to form between the Field Camp program and various agencies, local geologists and organizations. These partnerships increase the value of the program for teachers and improve the quality of the program. In addition to Florissant Fossil Beds National Monument, Cañon City BLM, and Roxborough State Park, the RMFC added the National Oceanic and Atmospheric Administration as a partner. This is the first year for the AFC and its partners include Schoodic Education and Research Center, the Hall Quarry, and three local geologists.

The first annual field camp report was written this year and is available online.

Short Courses

The 2015 annual meeting saw 375 people attending 15 short courses. Student attendance was the highest ever observed at 66% of the total. The percentage of students taking short courses continues to increase annually.

GeoCareers Interview Service

(Formerly the Employment Service Center)

Interview services were offered at the annual meeting to 12 universities and two companies. Combined services included interview space with options to bundle advertising and marketing of jobs on the GSA website, and through targeted messaging to members.

The Geological Society of America®
GEOCAREERS





A Voice For Deep-Time Sedimentary Crust Research



STEPPE is an NSF-funded consortium that champions the study of Earth's deep-time sedimentary crust and the record of life and climate it archives. STEPPE was created to facilitate communication among the geosciences community because *collaboration* was identified as key to sustained funding and effectiveness in today's challenging environment.

STEPPE strives to:

- Increase funding for research on the sedimentary crust through infrastructure development and improving access to data, information, and models;
- Communicate the importance of ancient, diverse sedimentary data in order to maintain a global economy, a healthy environment, and critical ecosystems;
- Facilitate communication among diverse components of the community of sedimentary crust researchers;
- Promote interdisciplinary education and workforce development and diversity; and
- Translate scientific advancements into effective tools for energy and climate policy and ecosystem management.

STEPPE ONLINE

The STEPPE website serves as a central portal for news, information, and collaboration. A variety of materials have been synthesized and made easily accessible, including:

- A searchable funding and fellowship opportunity database
- Consortium members' recent research and publications
- STEPPE-discipline White Papers & Workshop Reports
- Events calendar
- Blog, news digest, newsletter, and social media presence
- STEPPE Connect— Online collaborative platform that allows members to form online working groups, share content, schedule meetings, and discuss research with their community.



STEPPE WORKSHOPS

We foster research collaboration by funding workshops that bring together multidisciplinary groups that develop proposals for external funding agencies. STEPPE has funded:

- "ONE-Delta—Synthesizing Observational, Numerical, and Experimental data to unravel the complex dynamics of deltas and margin sequences" (PI— Ryan Sincavage, Vanderbilt University);
- "Increased precipitation extremes in greenhouse conditions; An integrated paleoclimate and anthropogenic perspective" (PI—Piret Plink-Bjorkund, Colorado School of Mines);
- "Lake Tanganyika: A Miocene-Recent Source-to-Sink Laboratory in the African Tropics" (PI—Michael McGlue, University of Kentucky);
- "Tracking Biotic Change across the Cretaceous-Paleogene of India" (PI—Jeffrey Wilson, University of Michigan); and
- "Biological and Environmental Transitions during the Neoproterozoic and Paleozoic" (PI—Sarah Pruss, Smith College).



STEPPE is funded by the National Science Foundation, NSF-EAR 1206274.

STUDENT TRAVEL AWARDS

STEPPE is committed to enriching young geoscientists' lives by assisting with funding, to allow travel to conferences and meetings around the globe. Fifteen awardees attended the Fourth International Paleontological Congress (IPC4) in Argentina and 11 awardees went to STRATI 2015 in Austria. Early career scientists and students were given the chance to meet others in the STEPPE disciplines, talk about research, and make lifelong connections. In 2015, STEPPE and GSA funded travel support for underrepresented minority students to attend both the Society for the Advancement of Chicanos and Native Americans in Science (SACNAS) and the GSA Annual Meeting. You can read about their experiences on our Deep Time Blog (<https://steppe.org/category/steppe-blogs/>).

STEPPE FELLOWSHIP PROGRAM

With support from our consortium members, STEPPE administers a Fellowship program that gives students the opportunity to work on science policy in Washington, D.C., or at the GSA Headquarters in Boulder, Colorado, to develop science communication skills, create education and outreach materials, and build upon professional networks and databases. Fellows also have the opportunity to interact with a diverse group of mentors as well as travel to the GSA Annual Meeting, Geo-CVD in Washington, D.C., and the American Geophysical Union Annual Meeting. Previous Fellows include:

- Education & Outreach Student Fellow: *Rachel Salter*, North Dakota State University;
- Science Communications Student Fellow: *Zoe Gentes*, University of Rhode Island;
- Policy Fellow: *Lindsey Bowman*, West Virginia University;
- Student Fellow: *Wassim Benhallam*, University of Utah—Salt Lake City;
- Student Fellow: *Erin Leckey*, University of Colorado—Boulder; and
- Student Fellow: *Kathryn Nold*, University of Indiana—Bloomington.

EDUCATION

STEPPE partners with science educators like FOSSIL (Fostering Opportunities for Synergistic STEM with Informal Learners), the National Park Service, museums and universities to provide earth science teachers with hands-on, field-based, professional development.

The multi-day program “Collaboration for Change: Fossil Plants and Ancient Climates” was created by STEPPE to provide middle school teachers with fossil-collecting experience, adaptable classroom modules consistent with the Next Generation Science Standards, and the training to confidently teach earth science concepts to students from diverse backgrounds. This successful program is now part of a larger, national project that is focused on urban middle school teachers and students from underrepresented minority populations.

CYBERINFRASTRUCTURE

STEPPE works to build capacity through project partnerships related to cyberinfrastructure. The STEPPE Office has working relationships with the Fossil Calibration Advisory Board, the Continental Scientific Drilling Coordinating Office, the Paleobiological Data Consortium, EarthCube Cyberinfrastructure for Paleogeosciences, iDigPaleo, the Paleobiology Database, and iDigBio.



STEPPE travel awardees built collaborations that continue from the 4th International Palaeontological Congress in Argentina to GSA 2015 in Baltimore and beyond. *Left to right:* Lydia Tackett, Heda Agic, Javier Luque, Robyn Dahl, Gary Motz, and Jessica Tashman.

STEPPE and partners have received funding from NSF EarthCube for the ePANDDA (Enhancing Paleontological and Neontological Data Discovery API) project. ePANDDA will develop software tools to connect three established and critically important data sources that will fundamentally change the nature of research questions that may be addressed by the scientific community.

CONSORTIUM MEMBERS

At its core, STEPPE builds connections between researchers, professionals, students, teachers, institutions, and policy-makers. We accomplish this through several key programs supported by:



STEPPE
3300 Penrose Place, P.O. Box 9140
Boulder, CO 80301, USA
mail@steppe.org
www.steppe.org
#deeptimerocks



Bridging the Geosciences & Public Policy



GSA ADVOCATES FOR GEOSCIENCE RESEARCH FUNDING

Many of GSA’s policy activities focused on supporting federal investments in geoscience research. Although several pieces of legislation proposed reducing geoscience funding, no provisions targeting geoscience at the National Science Foundation (NSF) were enacted in fiscal year 2016. Activities include:

Testimony

GSA submitted testimony to the House and Senate Appropriations Subcommittee on Commerce, Justice and Science in support of NSF and NASA and to the House and Senate Subcommittee on Interior, Environment and Related Agencies in support of the U.S. Geological Survey (USGS).

Coalition Support

Scientific organizations, including GSA, sent letters to Congress urging additional spending for science. GSA signed several letters highlighting the important contributions of the National Science Foundation’s geosciences research and need for geoscience research funding increases. GSA signed letters to congressional leaders by the Energy Sciences Coalition, Coalition for National Science Funding (CNSF), Coalition for Aerospace and Science, USGS Coalition, and Task Force on American Innovation that support research funding for agencies that support geoscience research.

In addition, GSA joined coalitions to thank Senators for their leadership in drafting the American Innovation and Competitiveness Act (S. 3084). This bill would authorize increases in funding, reduce the administrative burden of researchers, and strengthen STEM education.

Congressional Exhibits

GSA showcased geoscience research at three Capitol Hill exhibits that drew congressional members, staff, and executive branch leaders. At the CNSF Exhibit in support of National Science Foundation research on 26 April, GSA, American Geosciences Institute (AGI), and American Geophysical Union (AGU) cosponsored an exhibit featuring the research of Wilmarie Marrero-Ortiz, a Ph.D. candidate at Texas A&M in College Station. On 12 April, GSA jointly hosted a booth at the STEM on the Hill exhibit with AGU and AGI focused on DOE’s geothermal program. In September 2015, GSA co-organized the USGS Coalition Awards and Reception, where awards were presented to Reps. Suzanne Bonamici (D-OR) and Tom Cole (R-OK) for their support of the agency.

Congressional Briefings

GSA cosponsored briefings to provide geoscience information to congressional members and staff during the year, including

- Underpinning Innovation: The Science and Supply of America’s Critical Minerals and Materials;
- Congressional Briefing on El Niño;
- Advances in Earth Science: Data as a National Asset for Decision-Making; and
- Advances in Earth Science: Offshore Energy.



GSA MEMBERS MEET WITH POLICYMAKERS

GSA provides opportunities for its members to meet with Members of Congress by holding Congressional Visits Days and associated training sessions. Events this year included Climate Science Day, Geoscience Congressional Visits Day, Geology and Public Policy Committee visits, and a policy field trip offered during the 2015 GSA Annual Meeting. Participants begin with an afternoon orientation program that covers current geoscience-relevant legislation, background on the organization and structure of Congress, and strategies to build relationships between scientists and policymakers. The next day, scientists head out in teams, accompanied by a scientific society staff member, to meet with congressional offices on Capitol Hill.

Can't come to D.C.? Join other geoscientists in Geoscience District Visits Day and meet with your elected representatives when they return to their home districts!

GSA FELLOWS EXPERIENCE SCIENCE POLICY



Karen Paczkowski served as the 2015–2016 GSA-USGS Congressional Science Fellow. She spent a year working in the office of Senator Edward Markey (D-MA) on climate, energy, and other science policy issues.

Elizabeth Goldbaum was this year's GSA Science Policy Fellow. She spent the year working in GSA's government affairs office in D.C. acting as a science policy liaison between GSA scientists and policymakers.

POSITION STATEMENTS AND CRITICAL ISSUES

At its May 2016 meeting, the GSA Council approved revisions of the following Position Statements: "Public Investment in Earth Science Research," "Role of Government in Mineral and Energy Resources Research," "Expanding and Improving Geoscience in Higher Education," "The Importance of Teaching Earth Science," and "Diversity in the Geosciences Community." A new "Induced Seismicity" Critical Issue was created and the "Hydraulic Fracturing" Critical Issue was updated.



GSA members visit the Capitol during a policy field trip at the 2015 GSA Annual Meeting.



Elizabeth Goldbaum, 2015–2016 GSA Science Policy Fellow.



2015–2016 GSA-USGS Congressional Science Fellow Karen Paczkowski drops a bill off at the Capitol.



GSA Executive Director Vicki McConnell presents the 2015 USGS Coalition leadership award to Rep. Suzanne Bonamici (D-OR).



THE FOUNDATION

The Geological Society of America Foundation’s mission is to support the programs of the Geological Society of America. The Foundation welcomes contributions from individuals, corporations, foundations, and institutions.

2015–2016 HIGHLIGHTS

In fiscal year 2016, the GSA Foundation received contributions and pledges of more than \$2.64M from individual GSA members and corporations. This makes FY16 our most successful year ever. Our success was assured by 6711 separate gifts at all levels—the largest number in the Foundation’s 36-year history.

The responsibilities of the Foundation are to (1) support GSA programs and (2) preserve the Foundation’s assets for the future. With respect to the first, we were able to provide GSA with \$1,058,824 to support its programs—a near record amount. With respect to the second responsibility, the Foundation’s assets ended the year at a historic high—more than \$18.8M as compared with \$18M at the end of FY15.

Projects supported through member contributions in 2016 include:

- The LaMoreaux International Lecture Fund to support international travel for the Hydrogeology Division Birdsall-Dreiss lecturer
- The Bruce R. and Karen H. Clark Fund to bring about an improved level of understanding between the members of GSA and the nonscientific community.

I wish to recognize the continuing support of Paula and Jeffrey Gural and dozens of other individuals, associated societies, GSA sections and corporate sponsors for helping advance On To the Future, GSA’s flagship diversity enhancing program.

We are pleased that corporate partnerships supported a third year of the Geoscience Careers in Industry Program, which is now expanding into year-round resources for students and early career professionals and a presence at section meetings.

Please visit the Foundation’s website (www.gsafweb.org) for information and ideas regarding ways philanthropy will make a difference for GSA and the geosciences.

The Foundation is pleased to help donors support GSA programs and priorities important to them. Looking forward, the Foundation and GSA are collaborating to carry out even more effective resource-building strategies. With your help, we will shape a strong future for GSA.

THE FUTURE

The Foundation booth at the GSA Annual Meeting in Denver will be livelier than ever. The booth will host interactive presentations featuring several GSA programs that the Foundation supports through your generous gifts. The Foundation will host a Penrose Circle and Student Awards Reception and a special breakfast for significant donors. Once again, we will host the Penrose donor lounge for Penrose Circle level (\$500/a) contributors. We hope you can join us there.

The work of the Foundation on behalf of the Society and its members is ongoing and grows in importance each year. I encourage every member to avail themselves of the opportunity to serve GSA and to support the Foundation in their combined efforts to ensure the dynamism and strength of the geosciences.

John W. Hess, GSA Foundation President

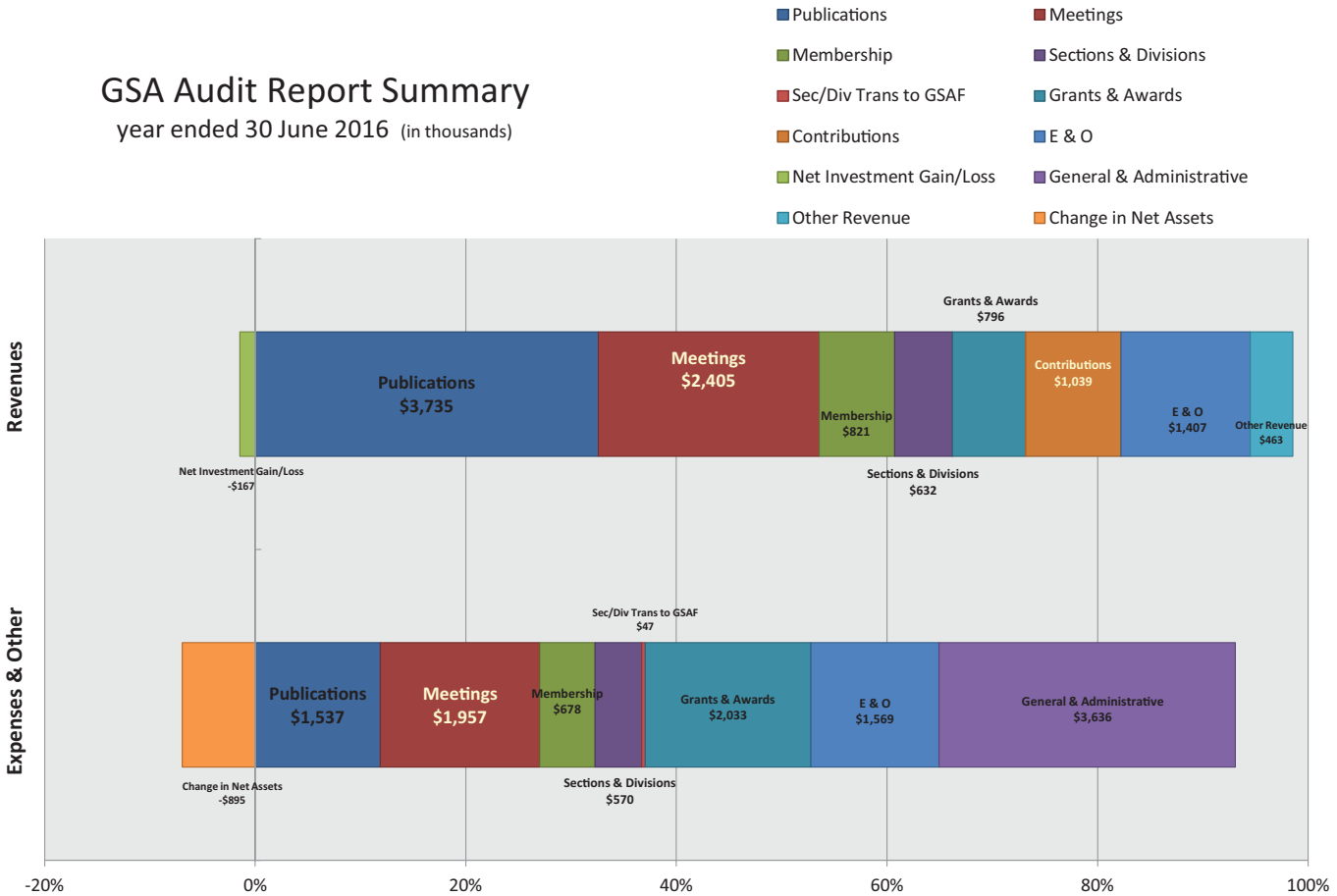
“ GSA Audit Report Summary ”

Fiscal year 2016 (FY16) ended with the change in net assets before investment earnings at the same level as fiscal year 2015 (FY15) despite significant changes in operations during the year. This result reflects the continuing dedicated commitment of all staff, volunteers, and leadership to the financial health of the organization. Brock and Company, CPAs completed their combined audit report of GSA for FY16 and issued an unqualified opinion.

Compared to FY15, the change in net assets before investment earnings decreased \$1.18M. For FY16, the Society had a net investment loss of \$.17M compared to an investment gain in FY15 of \$.97M. This change principally reflects the result of challenging worldwide economic and market conditions.

During FY16, GSA made no draws from investments and funded all activities from operations.

GSA Audit Report Summary
year ended 30 June 2016 (in thousands)



A full copy of the combined audit report can be accessed at <http://www.geosociety.org/AnnualReport.htm>.

The Treasurer’s report can be accessed at <http://www.geosociety.org/AnnualReport.htm>.

Portfolio Report

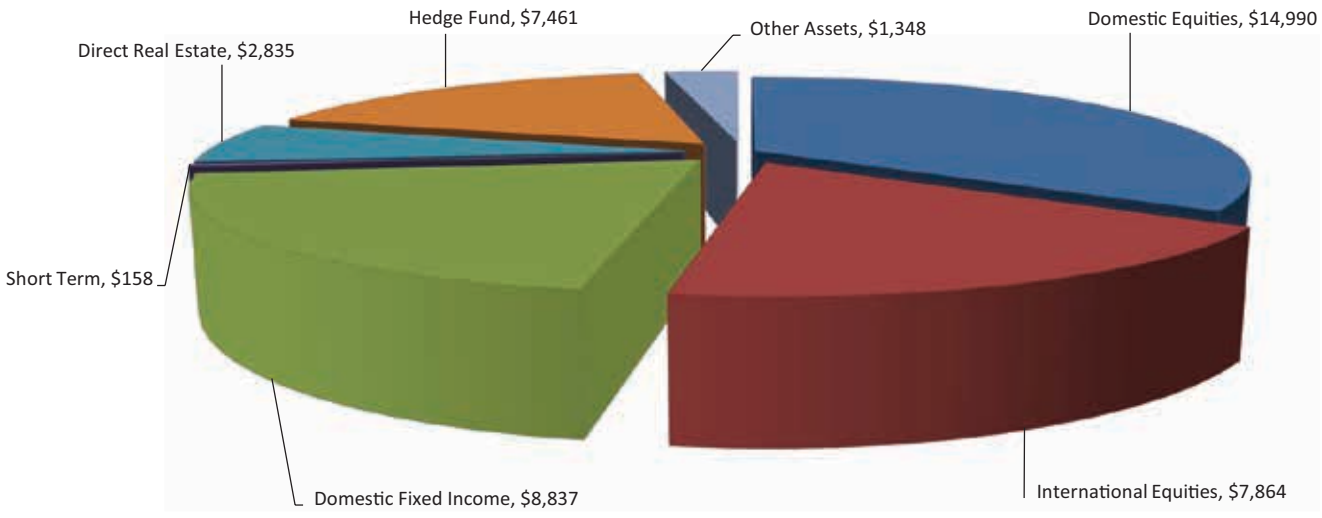
During FY16, the combined portfolio in total decreased \$.22M (1%). There were no withdrawals from investments in FY16. The graph presented is for the combined investment portfolio and excludes a separately managed Pooled Income Fund.

GSA and the GSA Foundation have a well-diversified investment portfolio and a dedicated team of volunteer members to manage these assets. Through FY16, the joint Investment Committee was composed of nine dedicated and knowledgeable voting members. The Committee relies on

expertise provided by an outside consulting firm, Ellwood Associates (name changed from Watershed Investment Consultants, Inc. during FY16). The organization continues to follow an investment strategy of diversification among investment classes within strategic allocation targets.

The Committee continues to search for members with the interest and aptitude to serve on the Investment Committee in the future. This service is a key component to the long term health of the portfolio, and consequently, the mission of GSA.

GSA and GSA Foundation
Jointly Managed Combined Investment Portfolio (in thousands)
30 June 2016



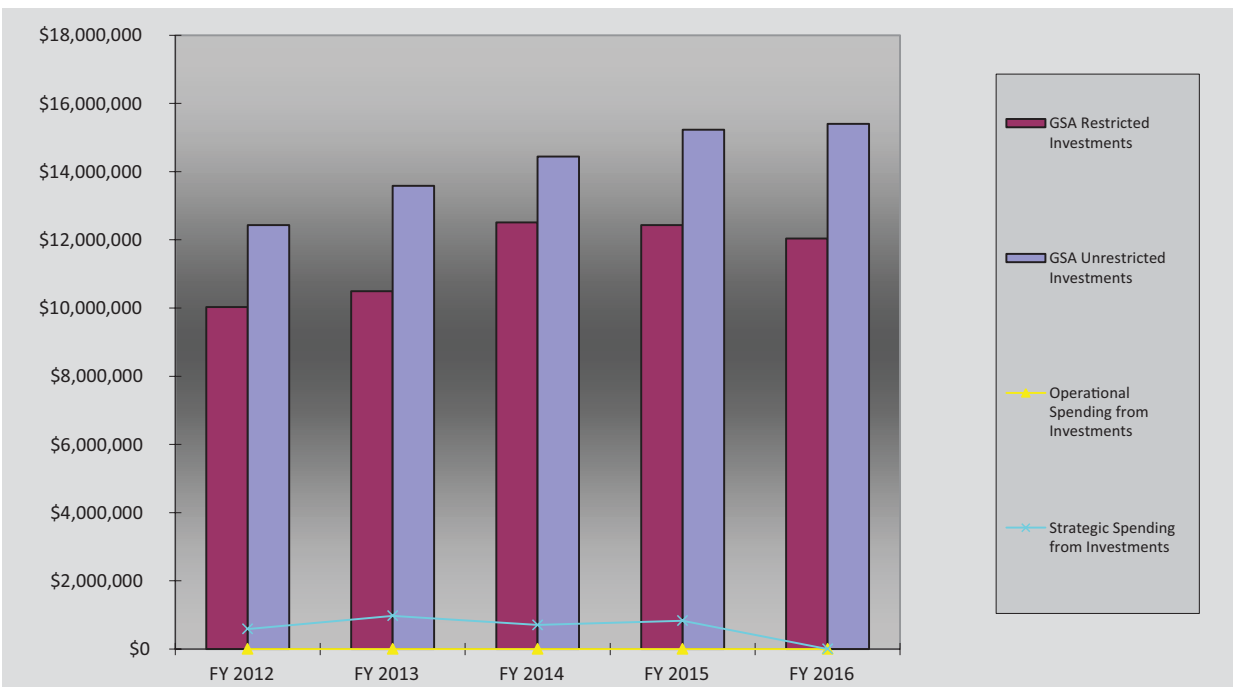
“ Portfolio Report ”

GSA’s restricted investment balance is primarily comprised of funds from R.A.F. Penrose (donated in the 1930’s) and from Joseph T. Pardee (donated in the 1990’s).

Outreach (E&O) programs and staffing, Social Media staffing, and Capital Campaign initiatives.

Unrestricted funds are vital to the future of GSA because they can be used where Council deems there is greatest need. In recent years, these funds have supported strategic projects such as digital publications, Government Affairs, Education &

As indicated in the chart below, GSA investments have primarily increased or decreased due to overall market conditions. The investment balances also fluctuate from investment earnings, less amounts paid from the Pardee fund for Research Grants and amounts designated for strategic spending by Council.



The yellow line indicates amounts paid to cover the gap between revenues and operating expenses, which has generally decreased over time. The blue line shows the fluctuation in strategic spending.

Council approved using Pardee funds for the student research grant program beginning in fiscal year 2004 and then approved spending unrestricted funds for strategic programs beginning in

fiscal year 2006. This spending is governed by policy to ensure viability of the portfolio over the long term to ensure the continuing mission of GSA.



Bruce R. Clark
Treasurer



Carl P. Fricke
GSA Investment Committee Chair

GSA gratefully acknowledges the invaluable contributions of Bruce R. Clark, Treasurer, and Carl P. Fricke, GSA Investment Committee Chair, for service to the Society and preparation of the financial data included in this report.



Allied in
Service to
Members &
the Larger
Geoscience
Community



Photo by Sayre

(as of 30 June 2016)

AASP—The Palynological Society
 American Association of Petroleum Geologists (AAPG)
 American Geophysical Union (AGU)
 American Institute of Professional Geologists (AIPG)
 American Quaternary Association (AMQUA)
 American Rock Mechanics Association (ARMA)
 American Water Resources Association (AWRA)
 Asociación Geológica Argentina (AGA)
 Association for the Sciences of Limnology and Oceanography (ASLO)
 Association for Women Geoscientists (AWG)
 Association of American State Geologists (AASG)
 Association of Earth Science Editors (AESE)
 Association of Environmental and Engineering Geologists (AEG)
 Association of Geoscientists for International Development (AGID)
 Blueprint Earth (BE)
 Clay Minerals Society, The (CMS)
 Colorado Scientific Society (CSS)
 Council on Undergraduate Research Geosciences Division (CUR)
 Cushman Foundation (CF)
 Environmental & Engineering Geophysical Society (EEGS)
 European Association of Geoscientists & Engineers (EAGE)
 European Geosciences Union (EGU)
 Geochemical Society (GS)
 Geologica Belgica (GB)
 Geological Association of Canada (GAC®)
 Geological Society of Africa (GSAf)
 Geological Society of Australia (GSAus)
 Geological Society of China (GSC)
 Geological Society of London (GSL)
 Geological Society of South Africa (GSSA)
 Geologische Vereinigung (GV)
 Geoscience Information Society (GISIS)
 Geoscience Society of New Zealand (GSNZ)
 Groundwater Resources Association of California (GRA)
 History of Earth Sciences Society (HESS)

International Association for Geoscience Diversity (IAGD)
 International Association for Promoting Geoethics (IAPG)
 International Association of Emergency Managers (IAEM)
 International Association of GeoChemistry (IAGC)
 International Association of Hydrogeologists (IAH)
 International Medical Geology Association (IMGA)
 International Society for Aeolian Research (ISAR)
 Israel Geological Society (IGS)
 Karst Waters Institute (KWI)
 Microanalysis Society (MAS)
 Mineralogical Association of Canada (MAC)
 Mineralogical Society, The (MS)
 Mineralogical Society of America (MSA)
 Minnesota Ground Water Association (MGWA)
 National Association of Black Geoscientists (NABG)
 National Association of Geoscience Teachers (NAGT)
 National Association of State Boards of Geology (ASBOG)
 National Cave and Karst Research Institute (NCKRI)
 National Earth Science Teachers Association (NESTA)
 National Ground Water Association (NGWA)
 Nepal Geological Society (NGS)
 Paleontological Research Institution (PRI)
 Paleontological Society (PS)
 Seismological Society of America (SSA)
 Sigma Gamma Epsilon (SGE)
 Sociedad Geológica Mexicana, A.C. (SGM)
 Società Geologica Italiana (SGI)
 Society for American Archaeology (SAA)
 Society for Environmental Geochemistry & Health (SEGH)
 Society for Mining, Metallurgy & Exploration, Inc. (SME)
 Society for Sedimentary Geology (SEPM)
 Society for the Preservation of Natural History Collections (SPNHC)
 Society of Economic Geologists (SEG)
 Society of Exploration Geophysicists (SEG)
 Society of Vertebrate Paleontology (SVP)
 Soil Science Society of America (SSSA)
 Western Interior Paleontological Association (WIPS)

“GSA Headquarters”

The impact to the GSA Headquarters campus from a land sale to the City of Boulder several years ago is now being felt. GSA sold acreage along and in a floodplain to the city as they were designing for more effective flood mitigation. The new landscaping will eventually result in a connected multipurpose transportation path and a reduction of the flooding hazard to the GSA building. Construction will continue until early 2018. In tandem, the nearby Diagonal Highway is being widened and will include safer walking and biking paths for employees and visitors.

The GSA redundant power generator system was tested several times this year due to heavy storms and construction damage to power cables. The natural gas-powered generator worked as designed and kept our systems running at full capacity for up to 8 hours. This past year required the beginning of heating and cooling system replacements. We are staggering the replacements to minimize the costs in any one fiscal year.

GSA Council approved the formation of an ad hoc Campus Vision Committee with the tasks of reviewing opportunities for the best usage of the GSA Headquarters building and determining an implementable maintenance schedule over the next several years. The committee is expected to report to Council in 2017.



Photo by Eric Christensen



Stewardship at GSA Headquarters



THE GEOLOGICAL SOCIETY
OF AMERICA®

SCIENCE ■ STEWARDSHIP ■ SERVICE