

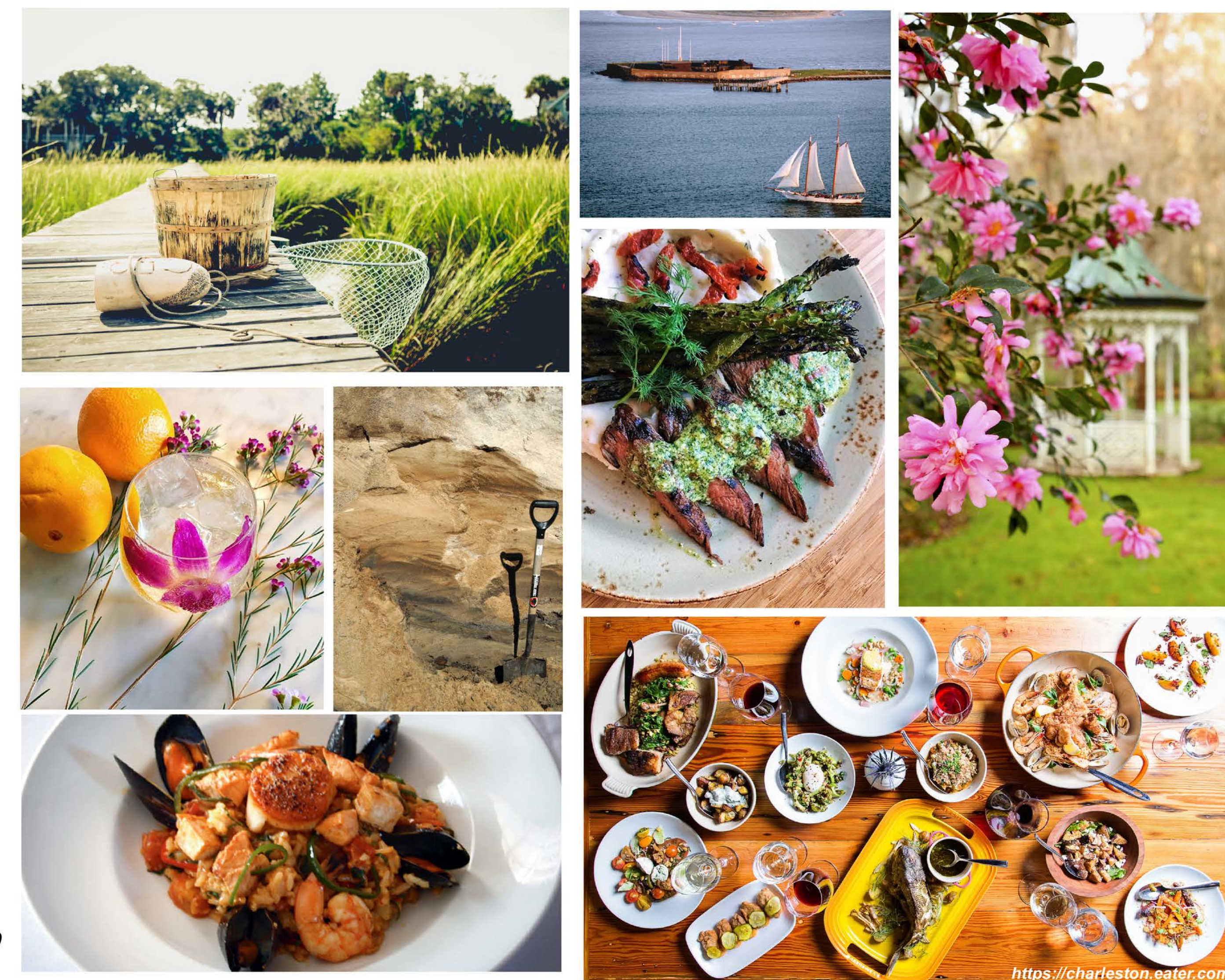


Southeastern Section Geological Society of America

68th Annual Meeting

March 28-29, 2019

Charleston, South Carolina



LOCAL COMMITTEE

general chairs:

Scott Harris (harriss@cofc.edu)
Katie Luciano (lucianok@dnr.sc.gov)

technical chairs:

Erin Beutel (beutele@cofc.edu)
Christopher Hein (hein@vims.edu)

treasurer:

Adem Ali (alika@cofc.edu)

field trip chairs:

John Chadwick (chadwickj@cofc.edu)
Steven Jaume (jaumes@cofc.edu)

exhibits chair:

Blair Tormey (btormey@email.wcu.edu)

sponsorship chair:

Amber Onufer
(amber.onufer@guidelinegeo.com)

student volunteer chair:

Cynthia Hall (hallcr@cofc.edu)

MEETING VENUE

Francis Marion Hotel, Downtown Charleston



Alabama · Florida · Georgia · Kentucky · Mississippi · North Carolina · South Carolina · Tennessee · Virginia · West Virginia