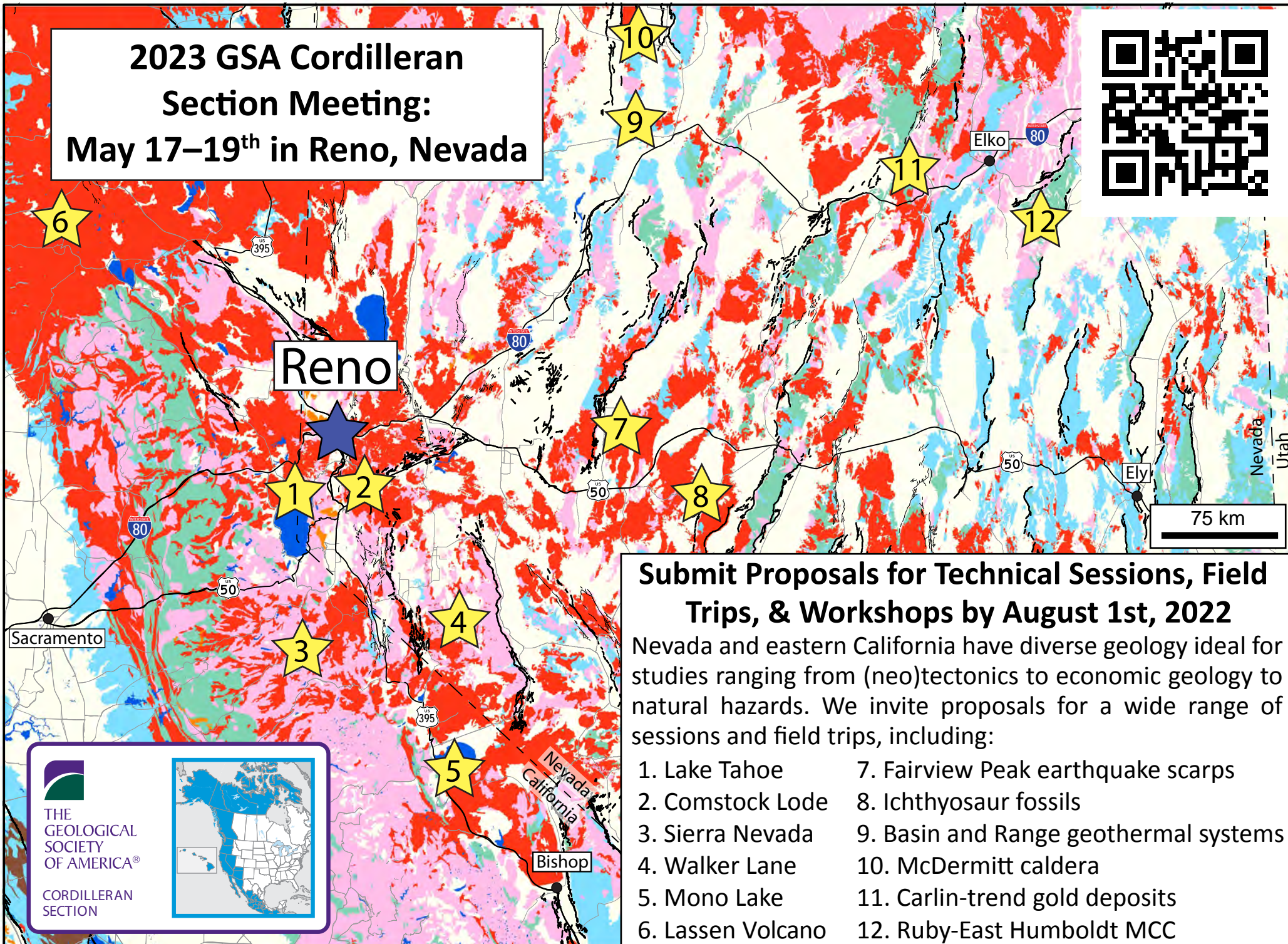
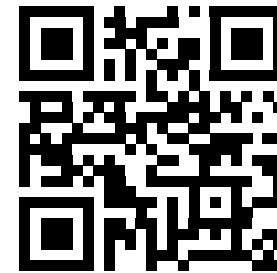


**2023 GSA Cordilleran  
Section Meeting:  
May 17–19<sup>th</sup> in Reno, Nevada**



**Submit Proposals for Technical Sessions, Field Trips, & Workshops by August 1st, 2022**

Nevada and eastern California have diverse geology ideal for studies ranging from (neo)tectonics to economic geology to natural hazards. We invite proposals for a wide range of sessions and field trips, including:

- |                   |                                       |
|-------------------|---------------------------------------|
| 1. Lake Tahoe     | 7. Fairview Peak earthquake scarps    |
| 2. Comstock Lode  | 8. Ichthyosaur fossils                |
| 3. Sierra Nevada  | 9. Basin and Range geothermal systems |
| 4. Walker Lane    | 10. McDermitt caldera                 |
| 5. Mono Lake      | 11. Carlin-trend gold deposits        |
| 6. Lassen Volcano | 12. Ruby-East Humboldt MCC            |

  
THE  
GEOLOGICAL  
SOCIETY  
OF AMERICA®  
CORDILLERAN  
SECTION



**Meeting Chair:**  
Stacia Gordon (staciag@unr.edu)

**Technical Program Chairs:**  
Andrew Zuza (azuza@unr.edu)  
Mike Darin (mdarin@unr.edu)

**Field Trip Chairs:** Pat Cashman (patriciahcashman@gmail.com);  
Harvey Kelsey (hmk1@humboldt.edu);  
Sue Cashman (smc1@humboldt.edu)

Geologic Map: Horton, J.D. (2017), <https://doi.org/10.5066/F7WH2N65>

[https://www.geosociety.org/GSA/Events/Section\\_Meetings/GSA/Sections/cd/2023mtg/home.aspx](https://www.geosociety.org/GSA/Events/Section_Meetings/GSA/Sections/cd/2023mtg/home.aspx)