

Scientists in Parks: Becoming an SLP Intern

2023 Summer Season

December 7, 2022

Let's make this event respectful and inclusive!

- **SHOW RESPECT**

- Keep questions concise and on topic.
- Be considerate and listen with an open mind.
- Avoid saying or doing anything that is or is likely to be perceived as harassment or bullying.

- **BE INCLUSIVE**

- Demonstrate that you welcome a diversity of individuals and their identities.
- Show that you value differing perspectives.
- Avoid exclusionary comments and behaviors based on any identity-based factors.

- **SPEAK UP AND ACT RESPONSIBLY**

- Report concerns to ethics@geosociety.org.
- Comply with GSA's [Events Code of Conduct](#).



Webinar Agenda

- Purpose
- Program Structure & Partner Roles
- Participant Stories & Experiences
- Project Subjects and Locations
- Program Benefits
- Eligibility
- How to Apply
- Timeline
- Resources & Contacts
- Live Q&A Moderated by Program Staff



Scientists in Parks

Purpose & Goals



- Meet park natural resource management needs
- Provide interns with meaningful natural resource management experience to foster lifelong connections to the NPS and improve their career potential
- Increase diversity within the natural resource ranks of the NPS



Scientists in Parks (SIP)

Structure

Browse all current positions
and find out where to apply
<https://go.nps.gov/sip>



SIP is managed by the
**NPS Natural Resource
Stewardship & Science
Directorate**

SIP Mosaics in Science positions supported by the Environment for the Americas are unique experiences for diverse youth to work side-by-side with scientists, researchers, and educators.

25+
positions

120+
positions

Partners



Partners



All SIP positions provide immersive experiences in natural resource fields focused on the next generation of park stewards—especially those underrepresented in science. Stewards Individual Placement Program, the Ecological Society of America, and the Geological Society of America support SIP Intern positions.

SIP Intern Team

Partner Roles



- ☐ Issue Call for Proposals
- ☐ Day-to-day administration and intern support
- ☐ Program Coordinators are the main point of contact for interns and supervisors
- ☐ Facilitates application system
- ☐ Applicant recruitment and outreach
- ☐ Helps manage the application system
- ☐ Professional development opportunities
- ☐ Applicant & participant engagement and outreach
- ☐ Social media
- ☐ Professional development opportunities



Participants and Mentors

Stories & Experiences



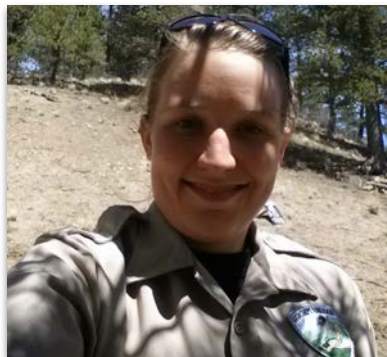
Samantha Hilburn
2022 SIP Intern



Sam Olivares-Mejia
2022 SIP Intern



Alex Ramírez Landaverde
2022 SIP Fellow



Lindsey Yann
2022-2023 Mentor



ReBecca Hunt-Foster
2022-2023 Mentor

Samantha Hilburn

2022-2023 SIP Intern

Science Communication Assistant

Denali National Park & Preserve

National Park Service, Alaska




Highlights

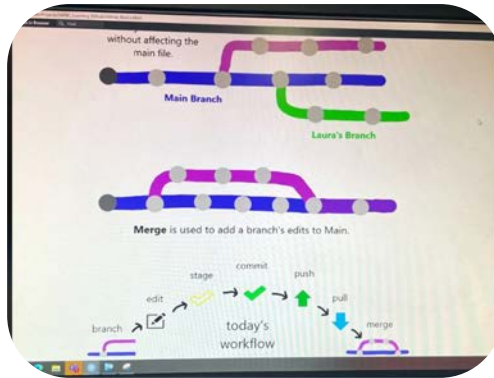
- Co-author and finalize formal Paleontological Resources Management Plan
- Create and publish new Online Junior Ranger Program curriculum
- Instruct classroom- and field-based youth environmental education programs
- Assist geology and archaeology teams with data collection, interpretation, and outreach

Sam Olivares-Mejia

GIS Assistant

Sonoran Desert Inventory & Monitoring Network
Data Management Team

 Tucson, Arizona



- Codes automated quality checks for data publications in R
- Develops and co-leads data science trainings
- Field map and dashboard maintenance via ArcGIS Online
- Field work experience across network protocols

Alex Ramírez Landaverde

2022 SIP Intern Participant

Climate change communicator

Everglades National Parks

National Park Service, Florida



Highlights

- Communicating climate change in a culturally relevant way
- Committee to bring diversity to the NP
- Lobster, butterfly surveying
- Community liaison

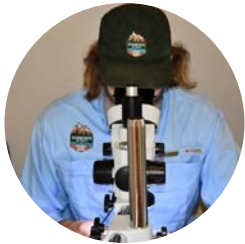
Lindsey T. Yann, Ph.D.

2022 SIP Mentor

Paleontologist

Waco Mammoth National Monument

National Park Service



Highlights

- Catalogued in-situ skeletons
- Screen washed for microfossils
- Started bone conservation projects
- Outreach and education

ReBecca Hunt-Foster

Park Paleontologist

Dinosaur National Monument, Utah

Past GeoCorps Participant



Highlights

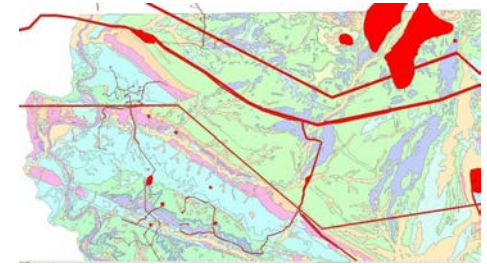
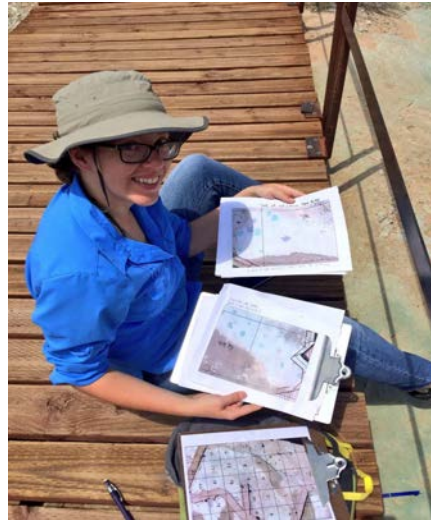
- Public outreach
- Museum curation work
- Field work and surveys
- Helping our partners in museums and universities with permits, excavations and research

ReBecca Hunt-Foster

Park Paleontologist

Dinosaur National Monument, Utah

Past GeoCorps Participant



Highlights

- Long-term monitoring of fossil resources (including the famous Carnegie Quarry you can view at the Quarry Exhibit Hall in the monument)
- Maintaining databases of all of our surveys, reports, and resources



Participants and Mentors

Live Q&A



Samantha Hilburn
2022 SIP Intern



Sam Olivares-Mejia
2022 SIP Intern



Alex Ramírez Landaverde
2022 SIP Fellow



Lindsey Yann
2022-2023 Mentor



ReBecca Hunt-Foster
2022-2023 Mentor

SIP Intern Opportunities

Summer 2023

Range of Subject Areas

- Acoustic
- Biology
- Cave & Karst
- Ecology
- Geology
- Geomorphology
- GIS
- Hydrology
- Interpretation
- Natural Resource Management
- Night Skies
- Paleontology
- Science Communication
- Visitor Use Management

Wide Array of Locations

- Acadia National Park
- Biscayne National Park
- Big Thicket National Preserve
- Zion National Park
- Grand Canyon National Park
- Rocky Mountain National Park
- Glacier National Park
- Joshua Tree National Park
- Mount Rainier National Park
- Haleakalā National Park
- Denali National Park and Preserve
- Chihuahuan Desert Network
- Midwest Region Office
- Water Resources Division

Intern Benefits

- **Paid** natural resource science experience
- Mentoring from NPS supervisors/mentors
- Networking opportunities
- Sense of stewardship & connection to national parks
- Segal AmeriCorps Education Award
- Hours toward Public Lands Corps (PLC) Hiring Authority or Direct Hiring Authority (DHA) (if eligible)
- Encouragement to share and present your work



Intern Eligibility

- ☐ Fully vaccinated against COVID-19
- ☐ U.S. citizen or U.S. permanent legal resident (Green Card holder)
- ☐ Have not completed four AmeriCorps terms previously
- ☐ Able to successfully complete a federal government background clearance **and** an AmeriCorps background check



Intern Eligibility

- ❑ Most SIP Intern positions **do not** require that you are a currently enrolled student
- ❑ Undergraduate students, graduate students, and recent graduates may apply to SIP Intern positions
- ❑ **Direct Hiring Authority (DHA) positions only:** Eligible participants must be enrolled in an undergraduate, graduate, or PhD degree program at an accredited institution of higher education for the duration of the internship and graduate **after** the completion of the internship. Certificate programs do not qualify for DHA positions
- ❑ Check project descriptions for specific student enrollment and/or completed coursework/degree requirements

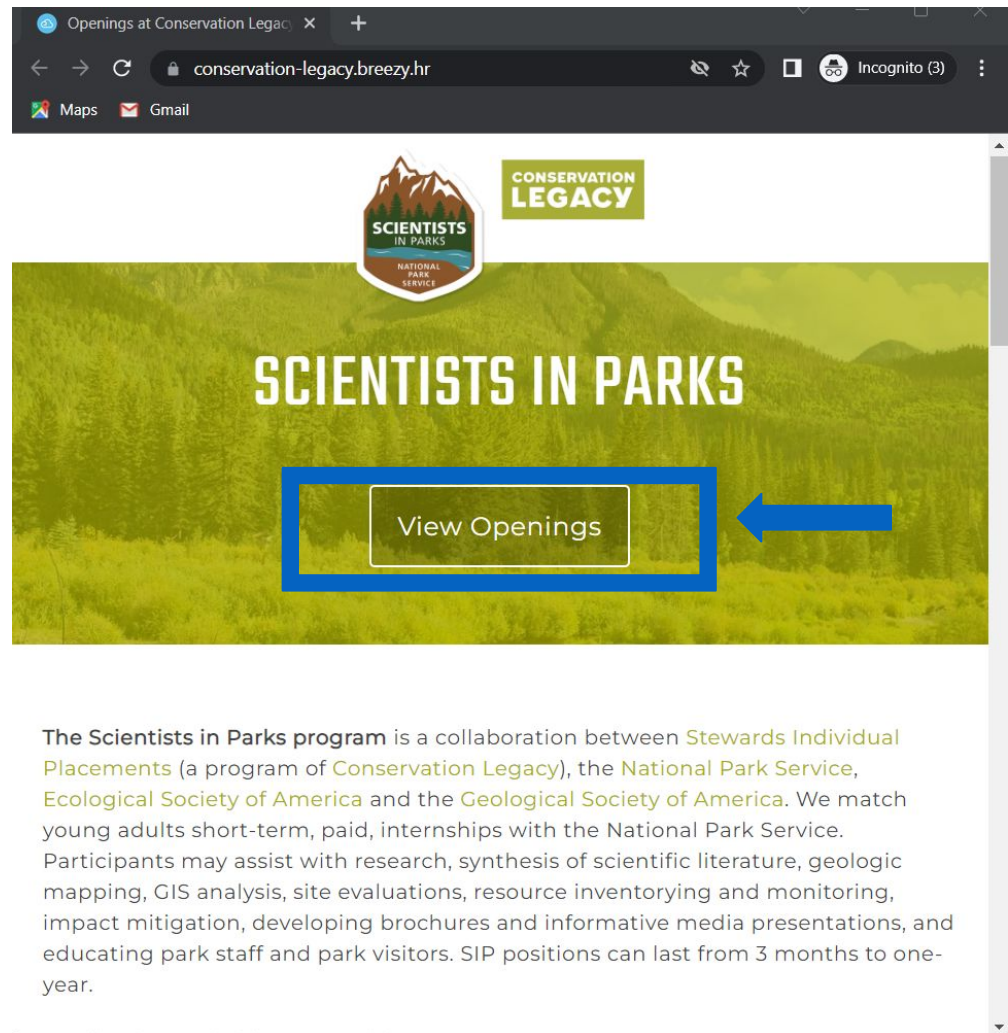


How to Apply to Become an SIP Intern

- Guidance applies to SIP Intern opportunities only
- 120+ postings
- Apply for up to five SIP Intern positions

1. Visit our application page:

<https://conservation-legacy.breezy.hr/>



How to Apply to Become an SIP Intern

Apply at <https://conservation-legacy.breezy.hr/>

2. Read about positions and apply

The screenshot shows a web browser window with the URL conservation-legacy.breezy.hr/preview. The page features a green header with the 'CONSERVATION LEGACY' logo and a 'Company Website' button. Below the header, the main title 'ECOLOGY ASSISTANT' is displayed in large white letters. Underneath, the location 'Indiana Dunes National Park, IN' is listed, along with 'Full-Time' and 'Biological Sciences' tags. A vertical sidebar on the left contains social media icons for email, LinkedIn, Twitter, and Facebook. The 'Job Openings' section is active, showing 'Ecology Assistant' as the selected position. A blue arrow points from the 'Job Openings' section to a blue-bordered box containing the 'Apply To Position' button. Below the button, a map of Indiana Dunes National Park is visible, showing the location of the park and surrounding areas like Porter, Indiana. The map includes a 'View larger map' link and a 'Map data ©2022' notice.

Position Preview

conservation-legacy.breezy.hr/preview

Maps Gmail

CONSERVATION LEGACY

Company Website

SCIENTISTS IN PARKS

ECOLOGY ASSISTANT

Indiana Dunes National Park, IN Full-Time Biological Sciences

Job Openings > Ecology Assistant

POSITION DETAILS

Position Title: Ecology Assistant

Park Unit: Indiana Dunes National Park

Location: Porter, Indiana

Number of positions available: 1

Can this position be fully remote: NO

INTERNSHIP DATES AND LENGTH

Duration: 12 weeks

Start Date: 5/23/2023

Flexible Start Date: YES

LIVING AND RELOCATION ALLOWANCE:

Weekly Stipend: \$525.00

Relocation Allowance: \$350.00

POSITION DESCRIPTION

This position focuses on two important aspects of pollinator stewardship: science communication and

Apply To Position

Indiana Dunes N... View larger map

Map data ©2022 Terms of Use Report a map error

How to Apply to Become an SIP Intern

Apply at <https://conservation-legacy.breezy.hr/>

3. Click “Apply to Position” for the project of interest, and complete the following items:

- ☐ Upload a resume file
- ☐ Complete the questionnaire for SIP Intern applicants
 - Personal Details, General Information, Qualifications, Short Answer / Free Form (6 Questions), Education
 - References (includes providing contact information for at least two references, you can provide up to three)
- ☐ Complete the Education section for your current or most recent college/university experience
 - List all relevant courses completed, the earned letter grade, and the institution. Then list all relevant courses that will soon be completed (**required**)
 - Upload a copy of an unofficial transcript from that institution (**required when applying for DHA positions, optional for other positions**)

How to Apply to Become an SIP Intern

Apply at <https://conservation-legacy.breezy.hr/>

Important:

- ☐ We are **not** collecting Letters of Recommendation for applying
- ☐ **You must apply separately for each SIP Intern position**, you can apply for up to five
- ☐ Once you hit submit, you **will not** be able to go back and edit your application for that SIP position

Application Tips

Apply at <https://conservation-legacy.breezy.hr/>

- ☐ Keep a list of the positions you apply for
- ☐ If you want to reuse information for multiple applications, keep responses in a text document, then copy & paste them into the application form
- ☐ Save a copy of your application information so you can refer back to it, in the event that you are interviewed

Application Tips

Apply at <https://conservation-legacy.breezy.hr/>

File Uploads

- ☐ Before you submit, if you wish to change the version of an uploaded file:
 - *Resume*
 - ☐ Click the “ATTACHED” button to upload another file, and it will overwrite it.
 - *Unofficial Transcript*
 - ☐ Click on the upload file name in the application, then select a new file to overwrite it.

References

- ☐ Ask your references if it's OK to list them, & verify their contact information (list up to 3)
- ☐ Personal references are accepted, but professional and/or academic references can help make a stronger impression
- ☐ Give them a heads up they could get contacted between January - March

Summer 2023 Timeline

Action	Deadline or Due Date
Application Deadline	22 January
NPS supervisors/mentors review applications and conduct interviews	23 January - 3 March
SIP Offer Day	6 March
Candidates accept their SIP positions & work out start date w/ parks	7 - 15 March
Participants enroll in program	During month prior to start date
SIP positions start	On or after Monday, 1 May Start dates can range between May - September

Winter season: Applications open early May through mid-June 2022 for positions starting 1 October, 2023 - 30 April, 2024

Resources and Contact Information

Where to Apply

- <https://conservation-legacy.breezy.hr/>

Application Support

- www.geosociety.org/sip

Questions about Applying

- sip@geosociety.org
- (303) 357-1097

General Program Information

- [NPS SIP website](#)

Programmatic Questions

- scientists_in_parks@nps.gov

Find Us on Social Media

- <https://linktr.ee/scientistsinparks>



THANK YOU